






2688 Hollow View Dr #7

Easton, PA 18040

HOME DETAILS

 4 Beds
  3.5 Baths
  3,227 Sq Ft
 2 Story
  2 Car Garage



Country Elevation - Side Entry Garage - RS7

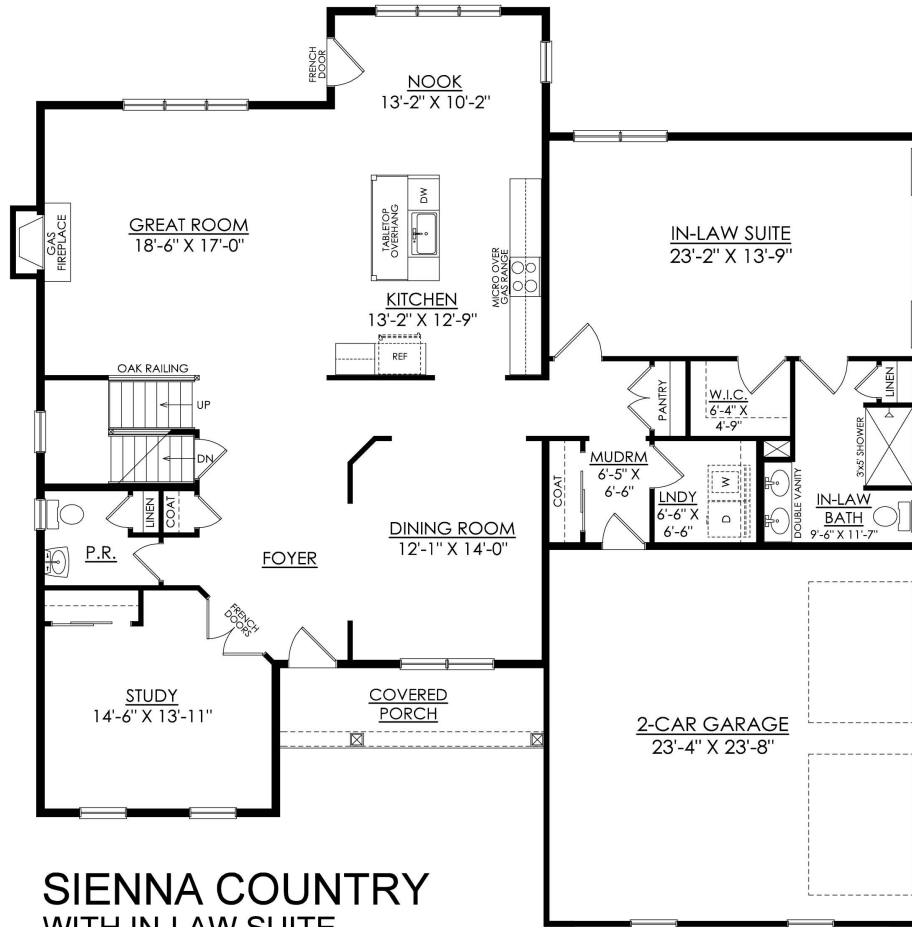
MOVE-IN READY HOME FEATURING DUAL OWNER'S SUITES Live in luxury and style with the spacious Sienna, featuring an open-concept living space designed for entertaining. The Kitchen boasts generous countertop space and a spacious island. Dine in elegance in the formal Dining Room or cozy Nook. The Great Room features a relaxing fireplace, making it the perfect spot to unwind or host family an... Read More at tuskeshomes.com

HOME FEATURES

4 Bedrooms
 3.5 Bathrooms
 2-Car Garage
 3227 Square Feet
 12' x 18' Trex Deck with White Vinyl Railing and Steps to Grade
 39" Fireplace with Fan Kit
 Kitchen Island with Granite or Quartz Countertops
 Stainless Steel Refrigerator, Range/Oven, Microwave, and Dishwasher
 Dual Owner's Suite
 First Floor In-Law Suite
 Study
 Mudroom
 1st Floor Laundry Room

2688 HOLLOW VIEW DR #7

Easton, PA 18040

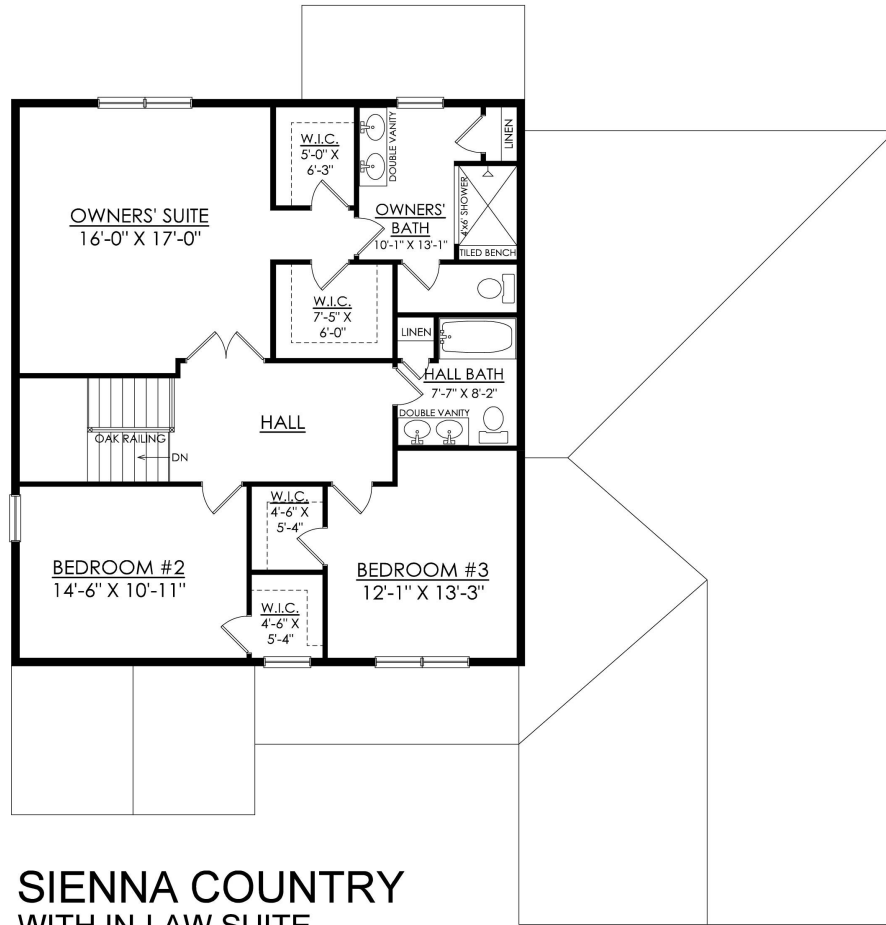


**SIENNA COUNTRY
WITH IN-LAW SUITE
STARTING AT 3227 SF
RIVERVIEW ESTATES**

1ST FLOOR PLAN

2688 HOLLOW VIEW DR #7

Easton, PA 18040



SIENNA COUNTRY
WITH IN-LAW SUITE
STARTING AT 3227 SF
RIVERVIEW ESTATES

2ND FLOOR PLAN