

# Aspen

Available in 1 Community

## PLAN DETAILS

4 Beds  
 3.5 Baths  
 3,131 Sq Ft  
 2 Story  
 3 Car Garage



Traditional Elevation

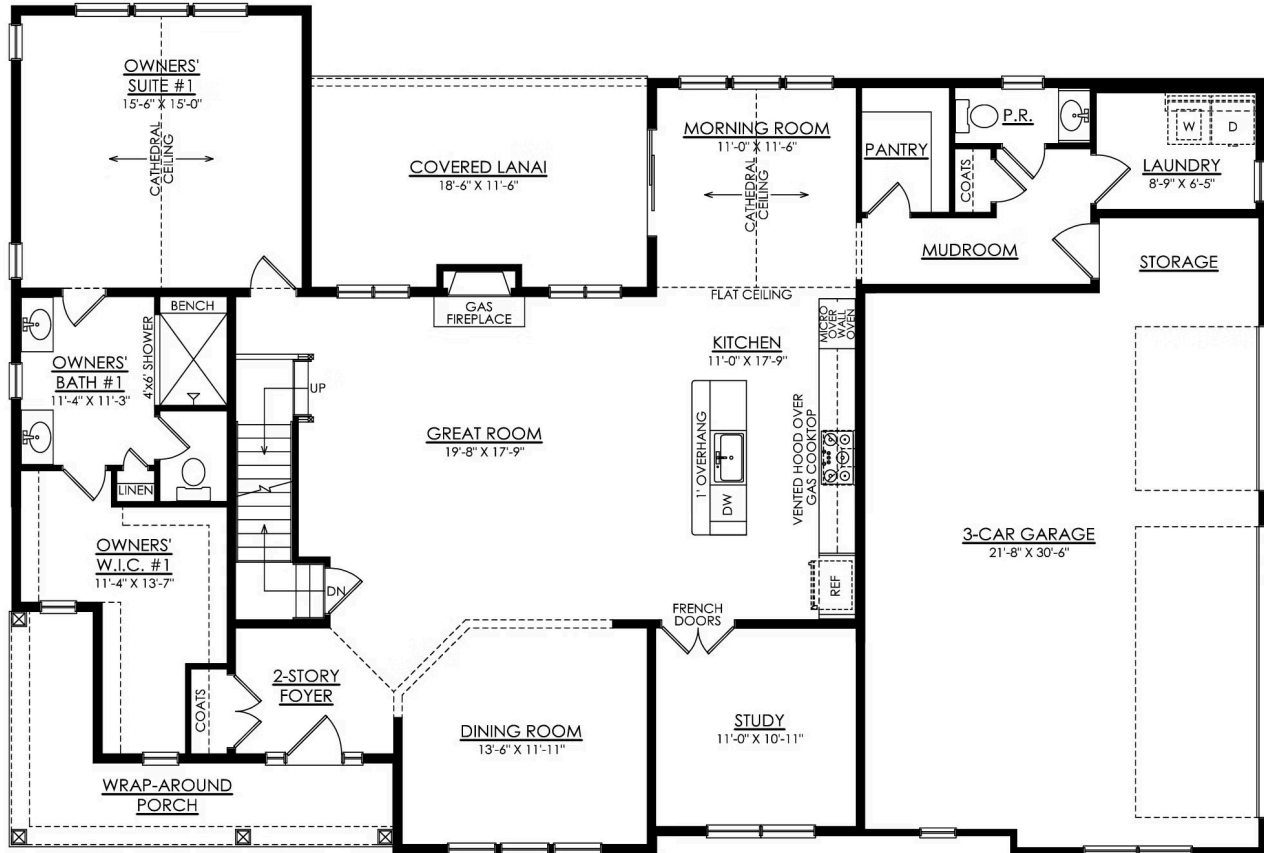
Enjoy the comfort and convenience of The Aspen, a single-family home with 4 bedrooms, 3.5 bathrooms, and over 3,000 square feet of living space. A charming Wrap-Around Porch welcomes you home and offers the perfect spot to relax outdoors. Inside, past the 2-Story Foyer, the open-concept layout seamlessly connects the Great Room, Kitchen, and Dining Room, with a private Study for added versatility. Off the Morning Room, the Covered Lanai expands your living space outdoors, creating a year-round gathering area for friends and family. With a Mudroom first-floor Laundry Room, and a 3-Car Garage with extra storage, everything is conveniently accessible. The Aspen features the rare convenience of Owners' Suites on both the first and second floors. The first-floor suite is tucked away for privacy a ... Read More at [tuskeshomes.com](http://tuskeshomes.com)

## PLAN FEATURES

- 4 Bedrooms
- 3.5 Bathrooms
- 3-Car Garage
- Starting at 3,131 Square Feet
- 1st Floor Owners' Suite with Cathedral Ceiling
- Additional 2nd Floor Owners' Suite
- 2-Story Foyer
- Open-Concept Great Room and Kitchen
- Morning Room with Cathedral Ceiling
- Study with French Doors
- 1st Floor Laundry
- Covered Lanai
- Covered Wrap-Around Front Porch

# Aspen

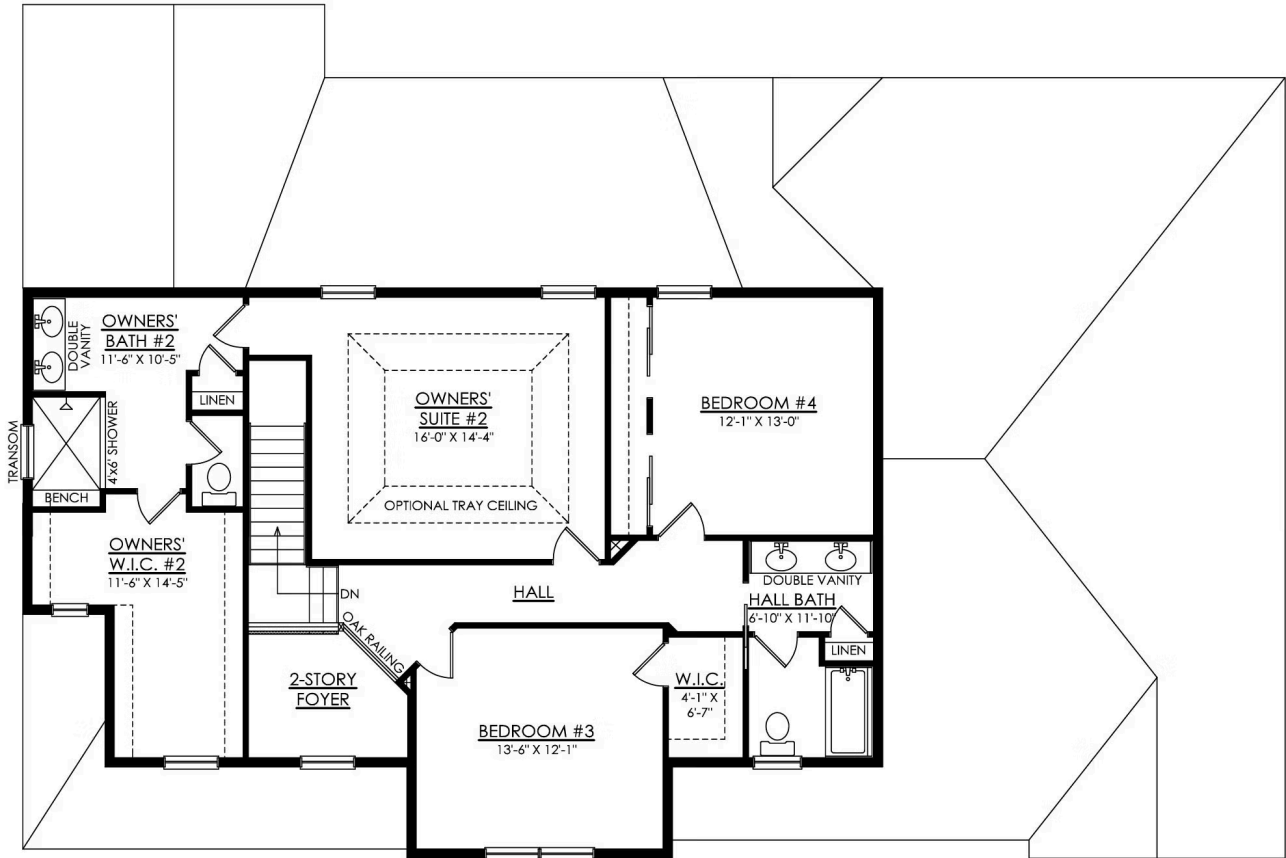
Available in 1 Community



**ASPEN TRADITIONAL**  
1ST FLOOR PLAN  
ESTATE

# Aspen

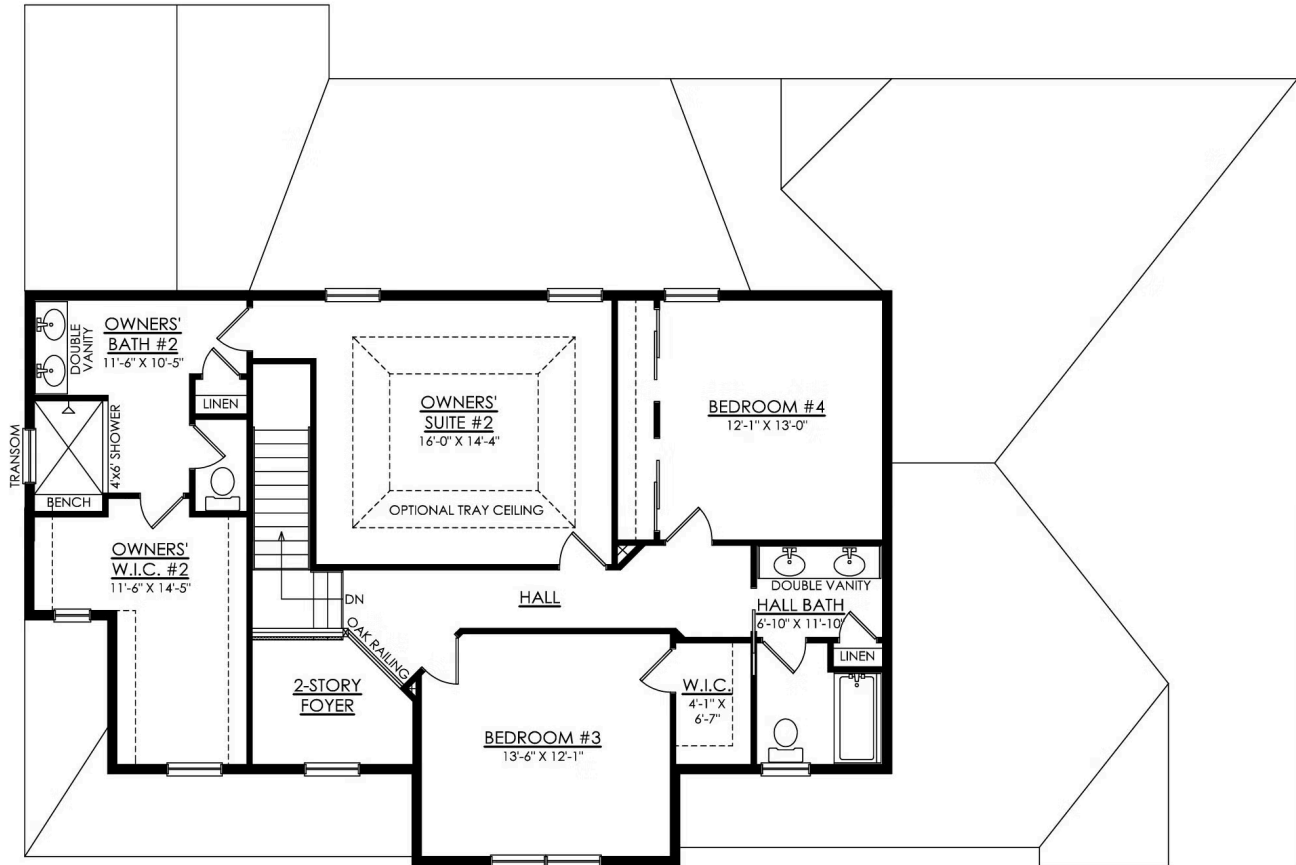
Available in 1 Community



## ASPEN TRADITIONAL 2ND FLOOR PLAN ESTATE

# Aspen

Available in 1 Community



## ASPEN TRADITIONAL 2ND FLOOR PLAN HERITAGE



# Aspen

Available in 1 Community