

Azalea

Available in 1 Community

PLAN DETAILS

- 2 Beds 2.0 Baths 1,412 Sq Ft
- 1 Story 2 Car Garage



Azalea

Welcome to the Azalea, a beautiful Single-Story home designed for your comfort. Located at the Reserves at Sand Springs, you'll find not just amazing Golf Course Views, but also enjoy hassle-free living with lawn care, landscaping, snow removal, trash removal, and other exterior maintenance included in the monthly HOA fee. Just past the Foyer, you're welcomed by the gorgeous open-concept design. Spanning the Great Room, Kitchen, and Dining Area is a large Cathedral Ceiling, making the Single-Story home even more luxurious. The Kitchen includes an Island with extra room for seating, a Pantry, and select Stainless Steel appliances. The spacious Owners' Suite features both a Walk-In Closet as well as a Private Bath with a double vanity. With an additional Bedroom and full Hall B ... Read More at tuskeshomes.com

PLAN FEATURES

- 2 Bedrooms
- 2 Bathrooms
- 2-Car Garage
- Single-Story Living
- Owners' Suite with Private Bath and Large Walk-In Closet
- Spacious Open-Concept layout
- Cathedral Ceiling in Living Area
- Kitchen Island with Overhang for Additional Seating
- Pantry
- Golf Course Views
- Maintenance Free Living - Monthly HOA Fee includes Lawn Care, Landscaping, Snow Removal, Trash, and other Exterior Maintenance

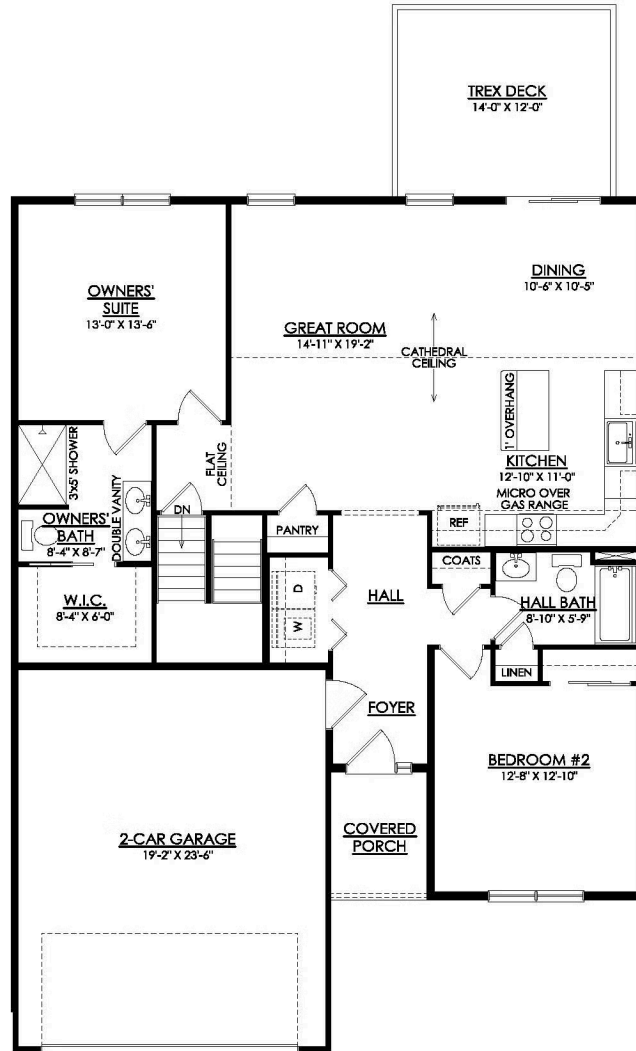
Azalea

Available in 1 Community



Azalea

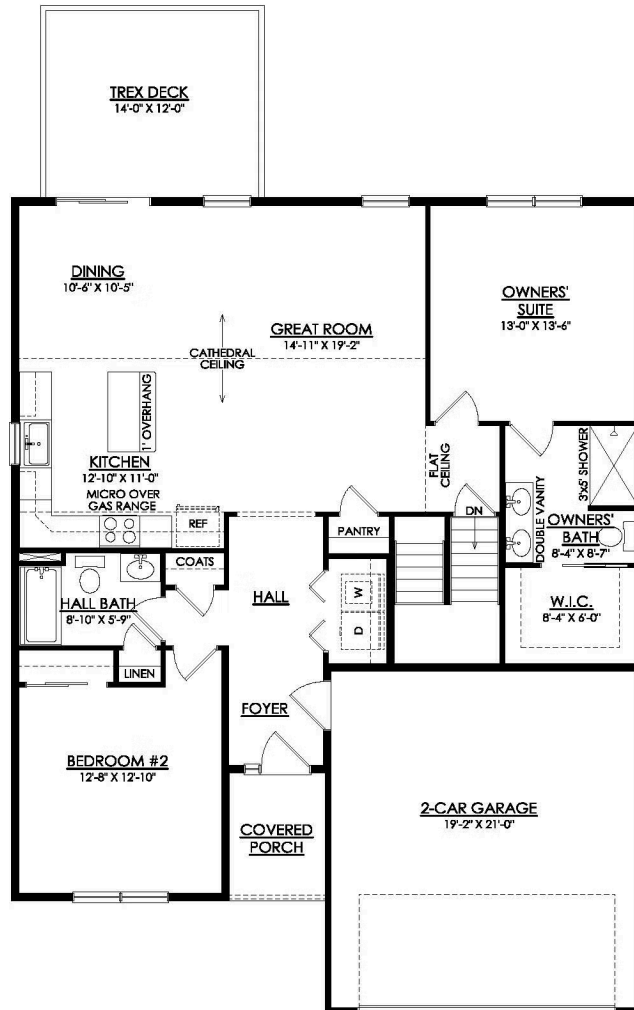
Available in 1 Community



**AZALEA
STANDARD UNIT**

Azalea

Available in 1 Community



AZALEA DORMER UNIT