

# Birchwood

Available in 2 Communities

## PLAN DETAILS

- 3 Beds 2.5 Baths 1,838 Sq Ft
- 2 Story 1 Car Garage



Birchwood Elevation

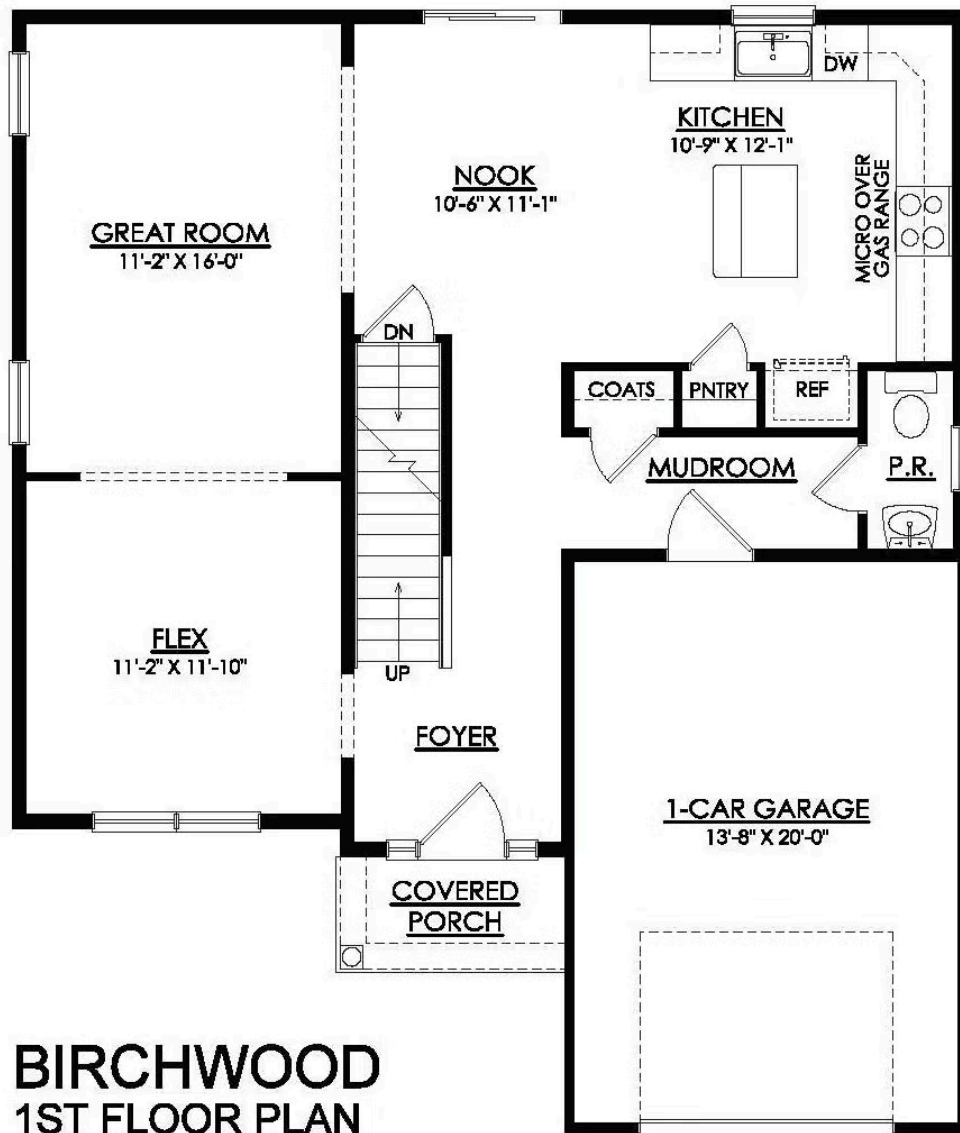
The Birchwood is perfectly designed for those looking for both comfort and style. With an open-concept floorplan, entertaining guests in this home is easy and enjoyable. The Kitchen features plenty of counter space and a spacious island with seating, making meal prep and hosting a breeze. The connected Great Room and Dining Nook offer ample space for family gatherings, while a Flex Room provides the option for a formal Living Room, Play Room, or private Study. Head upstairs to take comfort in the spacious Owners' Suite, equipped with a walk-in closet and a private bathroom, complete with a double-bowl vanity and large shower. Additionally, two more Bedrooms and a full Hall Bath are available for family or guests along with a 2nd floor Laundry Room. Some images, videos, virtual tours shown ma ... Read More at [tuskeshomes.com](http://tuskeshomes.com)

## PLAN FEATURES

- 3 Bedrooms
- 2.5 Bathrooms
- 1-Car Garage
- Starting at 1,838 Square Feet
- Kitchen Island with Granite or Quartz Countertops
- GE Stainless Steel Range/Oven, Microwave, and Dishwasher
- Flex Room
- 2nd Floor Laundry Room
- Private Owners' Suite

# Birchwood

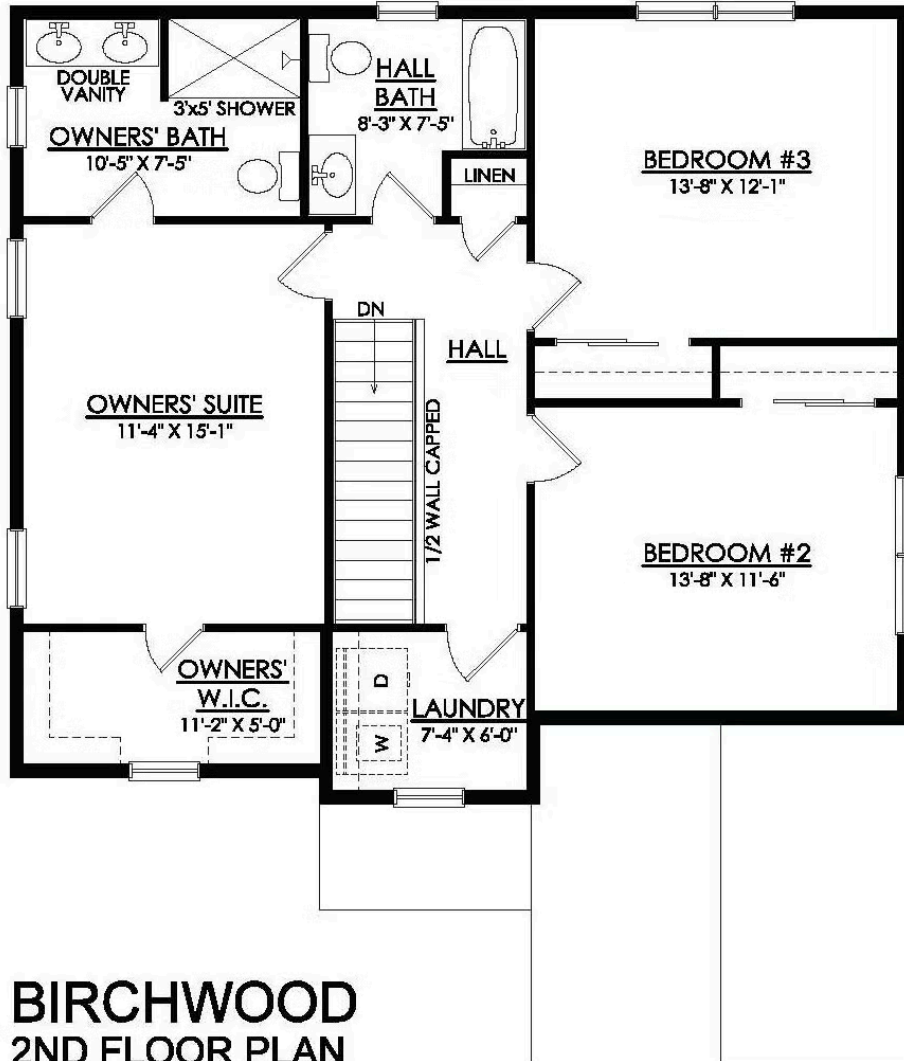
Available in 2 Communities



## BIRCHWOOD 1ST FLOOR PLAN

# Birchwood

Available in 2 Communities



# Birchwood

Available in 2 Communities



**BIRCHWOOD  
w/ 2-CAR GARAGE  
1ST FLOOR PLAN**