

Chapman

Available in 1 Community

PLAN DETAILS

- 4 Beds 2.5 Baths 2,144 Sq Ft
- 2 Story 2 Car Garage



Farmhouse Elevation

Meet the beautiful Chapman, an open and versatile design that is ideal for everything from relaxing with your family to entertaining friends. Upon entering this home, you'll find a cozy floor plan that is perfect for families of all sizes. The open-concept Kitchen, Dining Nook, and Great Room are all interconnected and effortlessly flow into the guest Foyer, Study, and Dining Room to create an easy traffic flow and a space that will impress everyone who enters this home. The second floor features a well-appointed Owners' Suite that's designed for relaxation. Two walk-in closets and a luxurious Owners' Bath make for a perfect oasis to unwind and recharge. Three additional Bedrooms, a shared Hall Bath, and convenient 2nd floor Laundry Room complete the Chapman's remarkable layout. An optional ... Read More at tuskeshomes.com

PLAN FEATURES

- 4 Bedrooms
- 2.5 Bathrooms
- 2-Car Garage
- Starting at 2,144 Square Feet
- Granite or Quartz Countertops
- Stainless Steel Oven/Range, Microwave, and Dishwasher
- Private Owners' Suite with 2 Walk-In Closets
- 2nd Floor Laundry
- Optional Bonus Room Over Garage
- Optional Morning Room

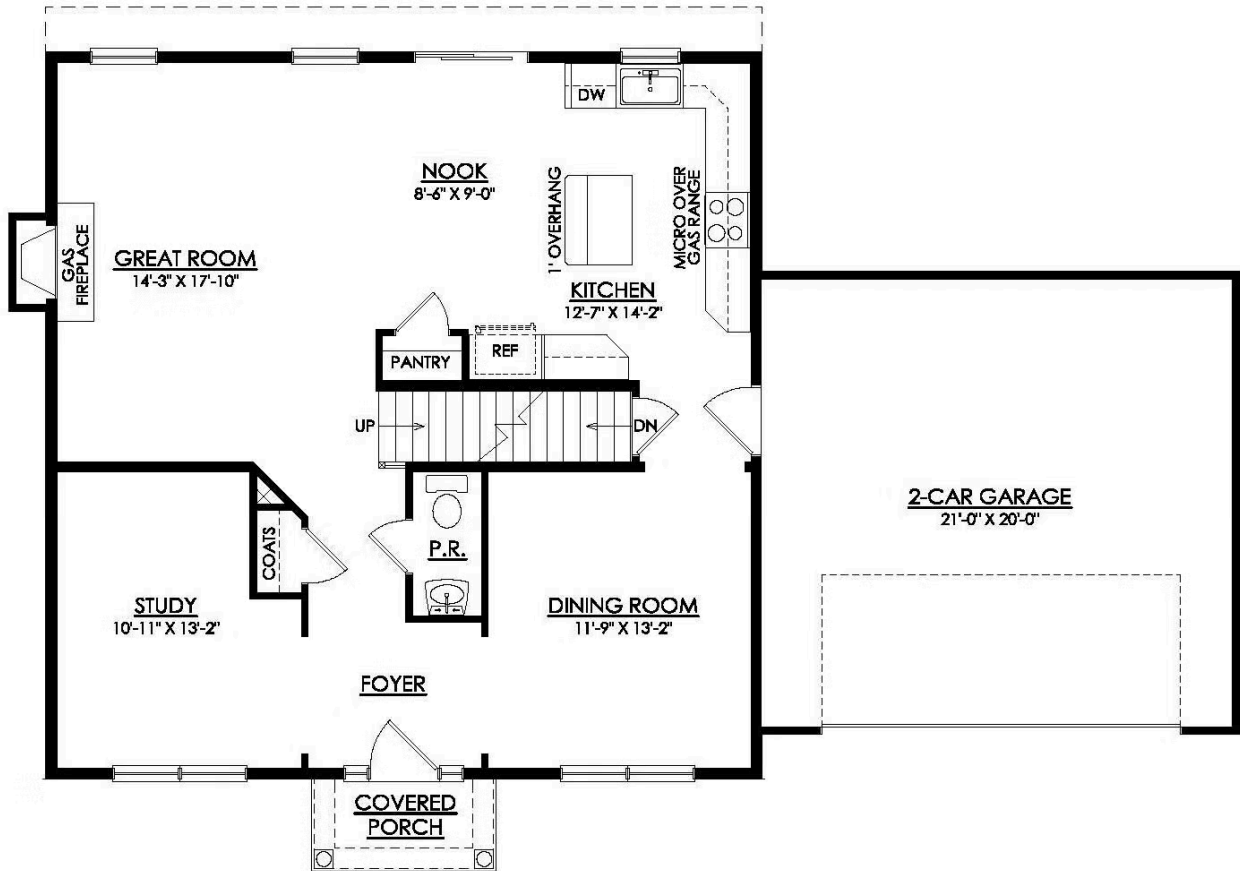
Chapman

Available in 1 Community



Chapman

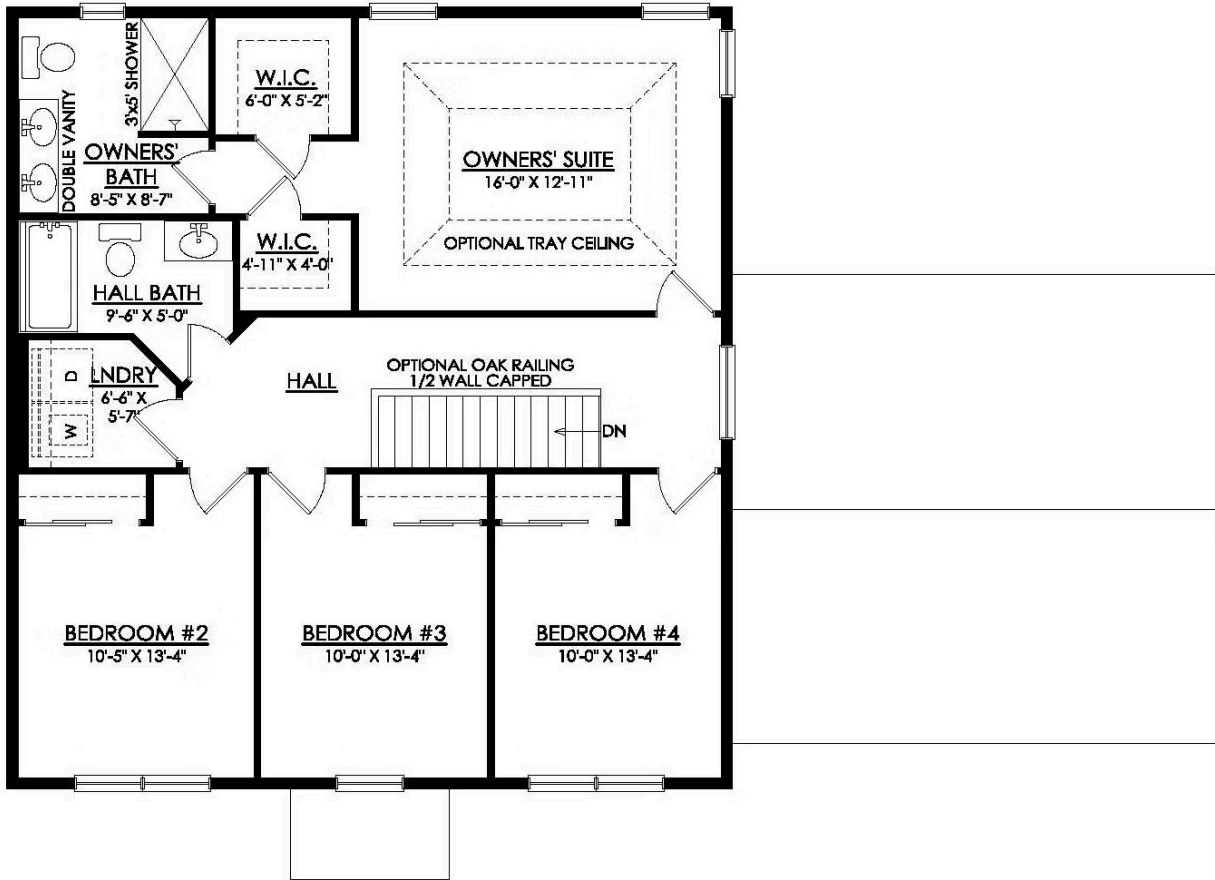
Available in 1 Community



CHAPMAN TRADITIONAL 1ST FLOOR PLAN

Chapman

Available in 1 Community



CHAPMAN TRADITIONAL 2ND FLOOR PLAN



Chapman

Available in 1 Community



Chapman

Available in 1 Community



Chapman

Available in 1 Community



Chapman

Available in 1 Community