

Franklyn

Available in 1 Community

PLAN DETAILS

3 Beds 2.5 Baths 2,486 Sq Ft

2 Story 2 Car Garage



Craftsman Elevation

Discover the Franklyn, a unique and luxurious home with a flexible layout. Enter the welcoming Foyer and find a well-located coat closet, Powder Room, and useful private Study. The Kitchen boasts an island with an overhang, plenty of counter space, and a view of the open Dining Room and Great Room. The spacious Great Room is perfect for entertaining and leads to a beautiful lanai in the backyard. The first-floor Owners' Suite features a large Bedroom, generous Walk-In Closet, and a private Bath with two vanities, tiled shower, and linen closet. French Doors provide another access point to the lanai, perfect for morning coffee or relaxing at the end of the day. The upstairs includes two additional Bedrooms, a Full Bath with double vanity, and a Loft for a Play Area, TV Room, or Study area. T ... Read More at tuskeshomes.com

PLAN FEATURES

- 3 Bedrooms
- 2 Bathrooms
- 2-Car Garage
- Starting at 2,486 Square Feet
- Granite or Quartz Countertops
- Stainless Steel Range/Oven, Microwave, and Dishwasher
- Walk-in Pantry
- Study
- Mudroom
- 1st Floor Laundry Room
- 1st Floor Private Owners' Suite
- 2nd Floor Loft
- Optional Bonus Room

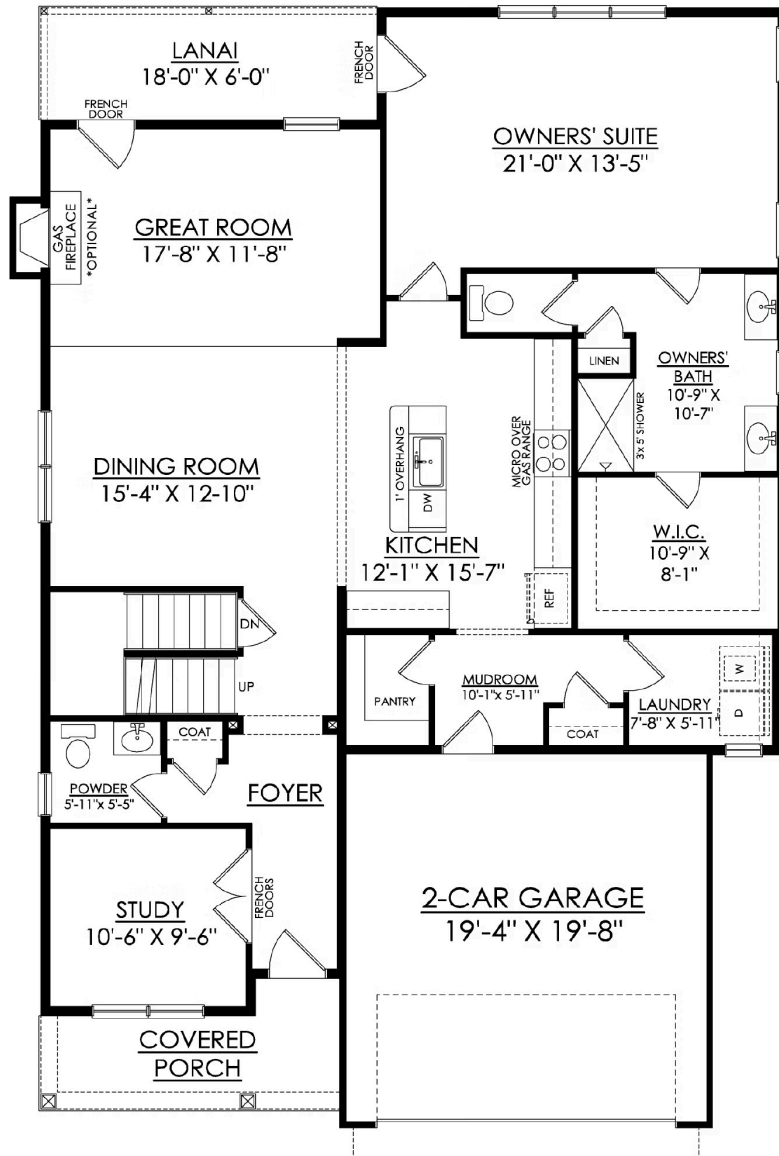
Franklyn

Available in 1 Community



Franklyn

Available in 1 Community

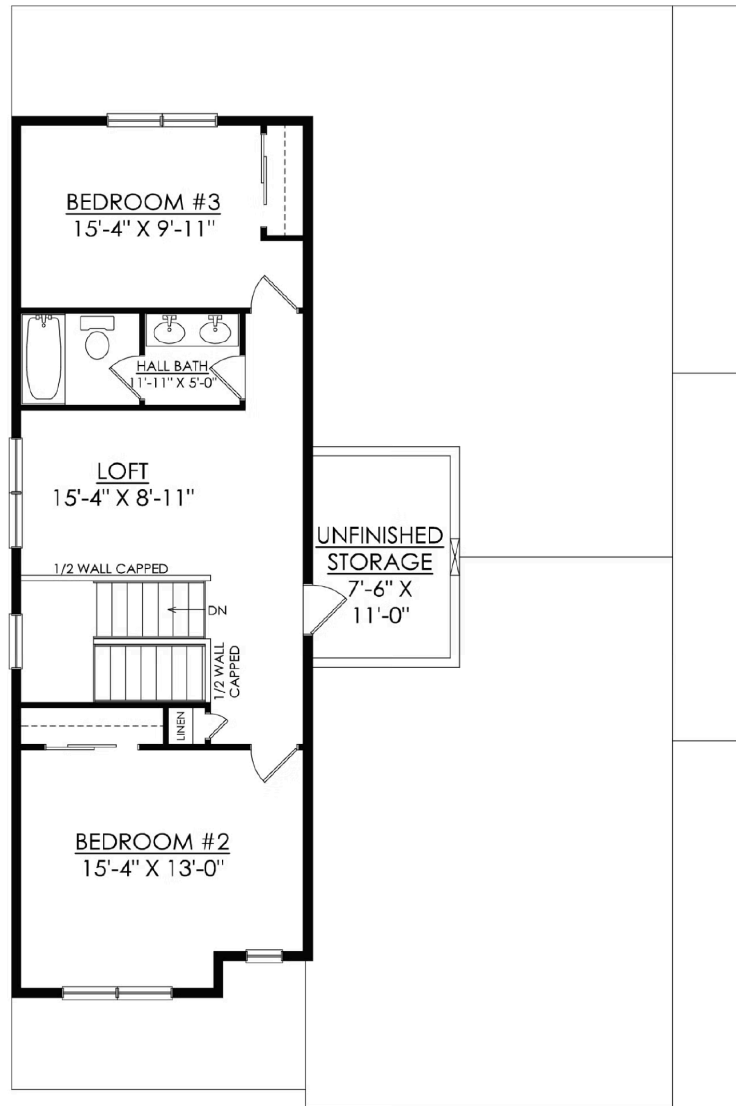


FRANKLYN TRADITIONAL 1ST FLOOR PLAN

STARTING AT 2486 SF

Franklyn

Available in 1 Community



FRANKLYN TRADITIONAL 2ND FLOOR PLAN

STARTING AT 2486 SF



Franklyn

Available in 1 Community



Franklyn

Available in 1 Community



Franklyn

Available in 1 Community



Franklyn

Available in 1 Community



Franklyn

Available in 1 Community