

Grayson

Available in 1 Community

PLAN DETAILS

- 3 Beds 2.5 Baths 2,033 Sq Ft
- 2 Story 2 Car Garage



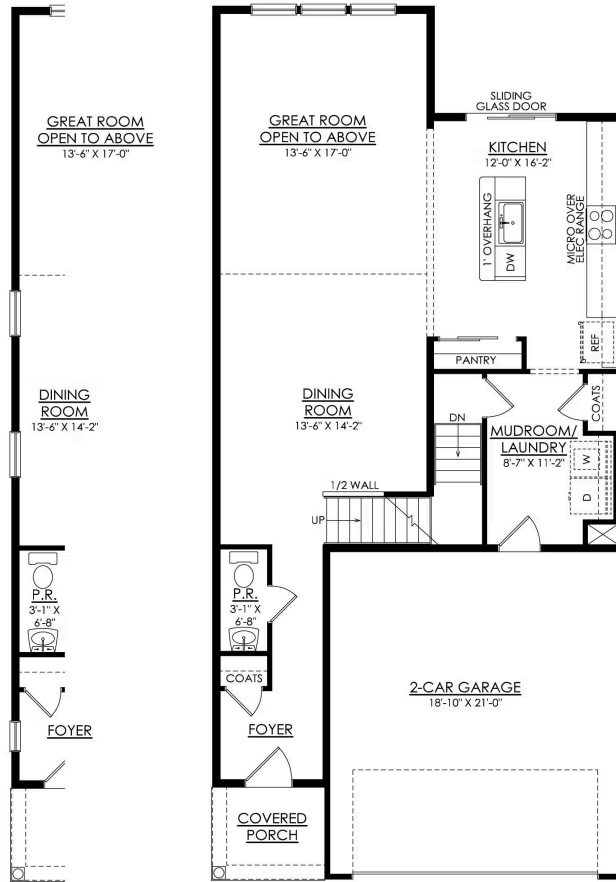
Welcome to the Grayson, a perfect home for those seeking ample living space, modern amenities, and comfortable living. With its open concept design and 2-story Great Room, this spacious floor plan will have you feeling right at home. The Kitchen is a chef's dream, with its ample counter space, island with seating, and a sliding glass door leading to the outdoors. Also found on the first floor is a welcoming Foyer, convenient Powder Room, and a spacious Mudroom just off the 2-car garage that's a perfect storage area for items you need on the go. Head upstairs to relax in the comfort of the Owners' Suite, complete with a spa-like Bath and a large walk-in closet. The 2nd floor Loft provides a flexible space that can be used as a home office, playroom, or a cozy reading nook. Two additional Bed ... Read More at tuskeshomes.com

PLAN FEATURES

- 3 Bedrooms
- 2.5 Bathrooms
- 2-Car Garage
- Starting at 2,033 Square Feet
- Covered Front Porch
- Great Room with Vaulted Ceiling
- Kitchen Island with Overhang for Seating
- Pantry
- Mudroom
- 1st Floor Laundry Room
- Owners' Suite with Private Bathroom
- 2nd Floor Loft
- Optional 4th Bedroom

Grayson

Available in 1 Community

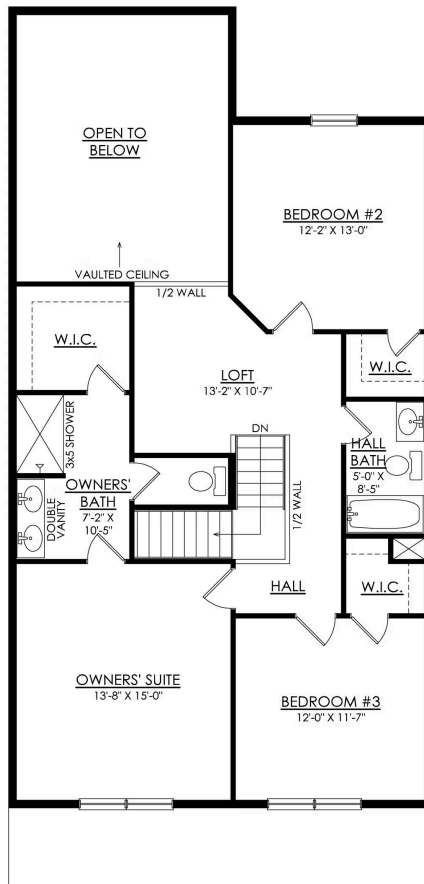


GRAYSON
END UNIT

GRAYSON- 1ST FLOOR
STARTING AT 2007 SF

Grayson

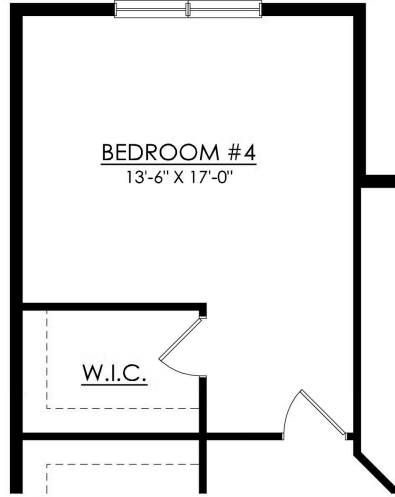
Available in 1 Community



GRAYSON- 2ND FLOOR
STARTING AT 2007 SF

Grayson

Available in 1 Community



GRAYSON
OPT. 4TH BEDROOM
ADDS 246 SF