

Madison

Available in 5 Communities

PLAN DETAILS

4 Beds 2.5 Baths 2,392 Sq Ft

2 Story 2 Car Garage



Traditional Elevation

Welcome to the Madison, a charming and inviting home that's become one of our most popular floorplans. You'll feel right at home as soon as you step into its modern open-concept main living area. The seamless flow between the Dining Room, Kitchen with Nook, and Great Room creates a warm and welcoming atmosphere. The bright and sunny study with French doors and wall of windows is a perfect place to work or learn from home. The welcoming Foyer, convenient Powder Room, and practical Mudroom off of the 2-car garage are just some of the lovely touches that make the Madison special. Upstairs, the Owners' Suite features a spacious Walk-In Closet and private ensuite Bath. With three additional Bedrooms, a full Bath, and a convenient Laundry Room, there's plenty of space for everyone! Some images, v ... Read More at tuskeshomes.com

PLAN FEATURES

- 4 Bedrooms
- 2.5 Bathrooms
- 2-Car Garage
- Starting at 2,392 Square Feet
- Granite or Quartz Kitchen Countertops
- GE Stainless Steel Range/Oven, Microwave, and Dishwasher
- Private Owners' Suite
- Alternate 2 Floor Layout Options
- Study with French Doors

Madison

Available in 5 Communities



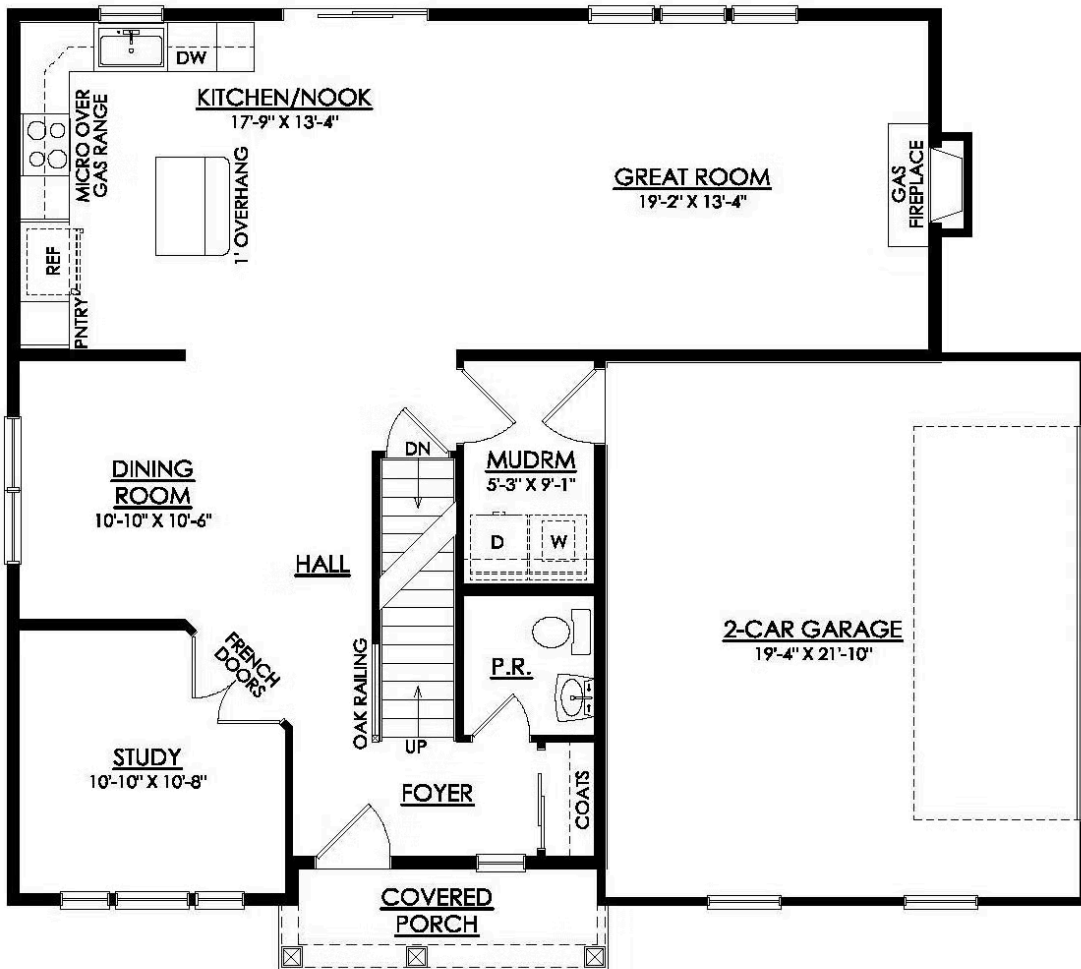
Country Elevation



Traditional Elevation

Madison

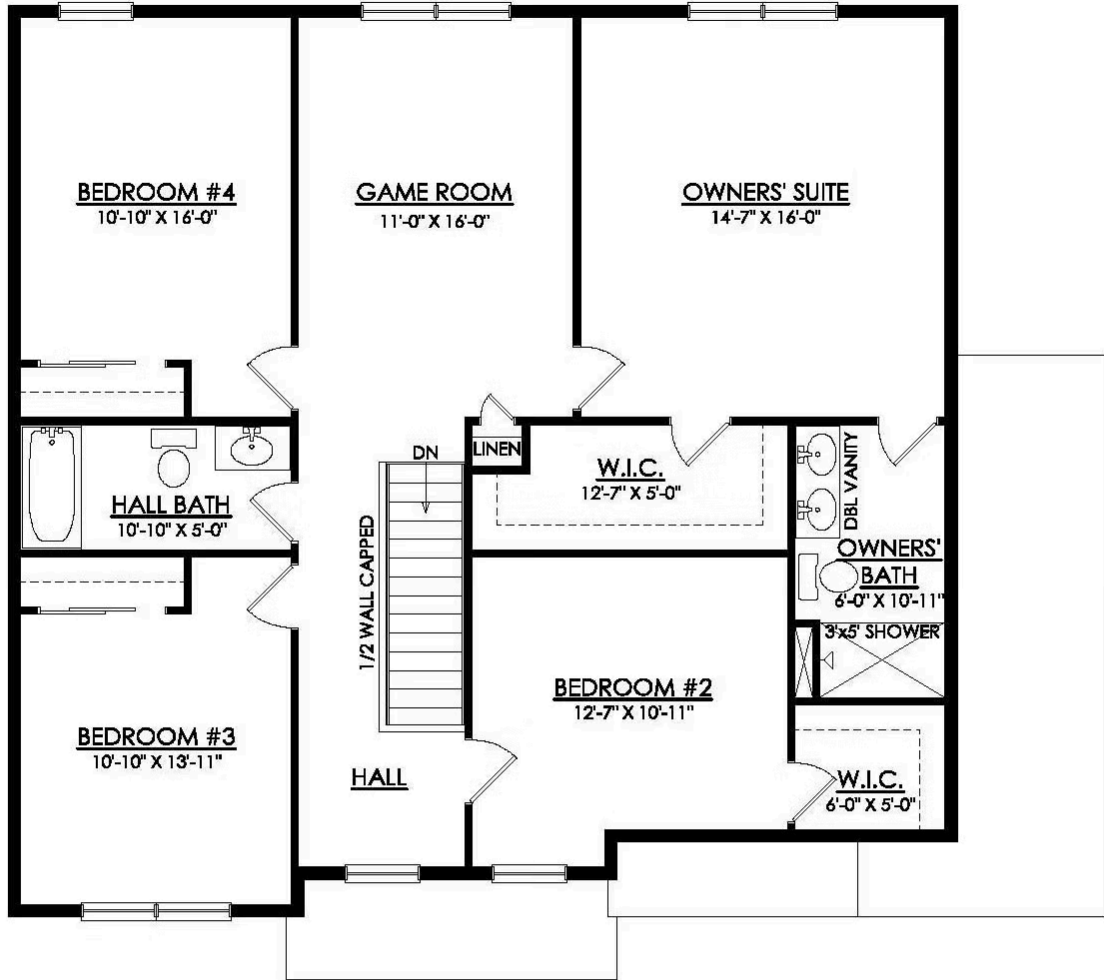
Available in 5 Communities



MADISON TRADITIONAL 1ST FLOOR PLAN PREMIER

Madison

Available in 5 Communities



MADISON TRADITIONAL 2ND FLOOR PLAN PREMIER



Madison

Available in 5 Communities



Madison

Available in 5 Communities



Madison

Available in 5 Communities



Madison

Available in 5 Communities



Madison

Available in 5 Communities



Madison

Available in 5 Communities



Madison

Available in 5 Communities



Madison

Available in 5 Communities