

Nittany

Available in 2 Communities

PLAN DETAILS

- 4 Beds 2.5 Baths 2,081 Sq Ft
- 2 Story 2 Car Garage



With an open-concept design, the Nittany is perfect for entertaining and daily living. The Kitchen, Great Room, and Dining Room are all connected, so you can stay engaged with your guests while whipping up delicious meals. The Kitchen includes modern finishes and a large kitchen island that provides extra seating for casual dining. Take the stairs to the second floor and you'll find a spacious four-bedroom layout. Unwind in your roomy Owners' Suite that includes a walk-in closet and private Bath. Three more Bedrooms, including one that could double as a study, a Full Bath, and a 2nd-floor Laundry Room complete the Nittany's well-designed layout. Some images, videos, virtual tours shown may be from a previously built Tuskes home of similar design. Actual options, colors, and selections may vary. Read More at tuskeshomes.com

PLAN FEATURES

- 4 Bedrooms
- 2.5 Bathrooms
- 2-Car Garage
- Starting at 2,081 Square Feet
- Kitchen Island with Granite or Quartz Countertops
- Stainless Steel Range/Oven, Microwave, and Dishwasher
- Spacious open floorplan
- 2nd Floor Laundry Room
- Private Owners' Suite

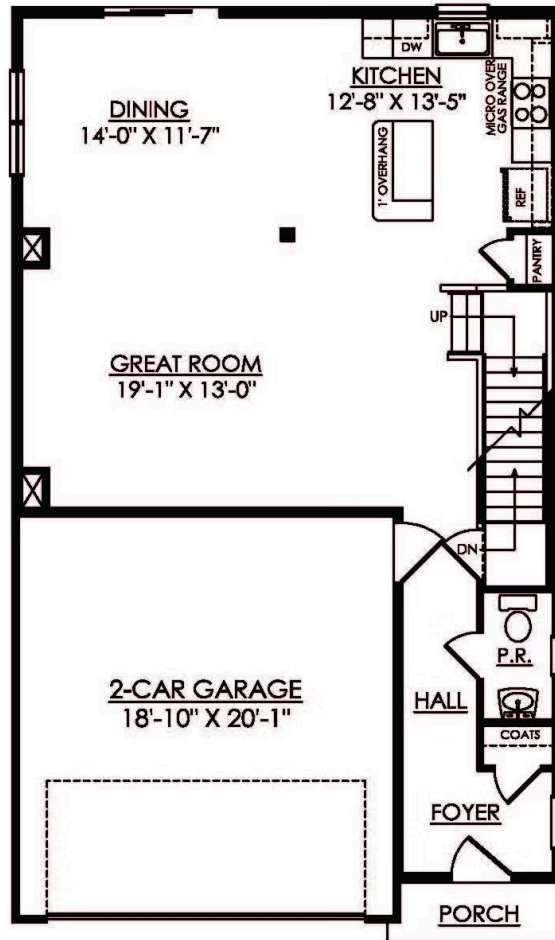
Nittany

Available in 2 Communities



Nittany

Available in 2 Communities

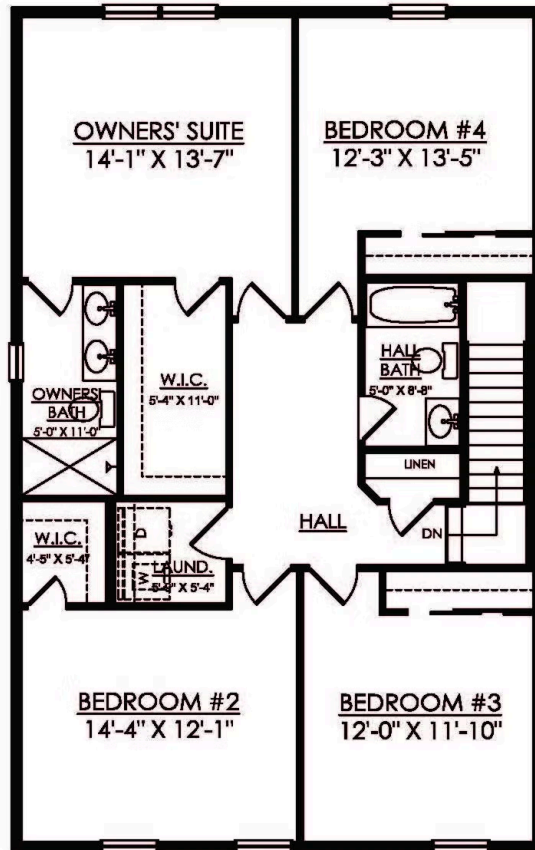


NITTANY
STARTING AT 2081 SF

1ST FLOOR PLAN

Nittany

Available in 2 Communities



NITTANY
STARTING AT 2081 SF

2ND FLOOR PLAN