






6 Spring Court #50

Lehigh Valley, PA 18020

HOME DETAILS

-  4 Beds
-  4.0 Baths
-  3,353 Sq Ft
-  2 Story
-  3 Car Garage



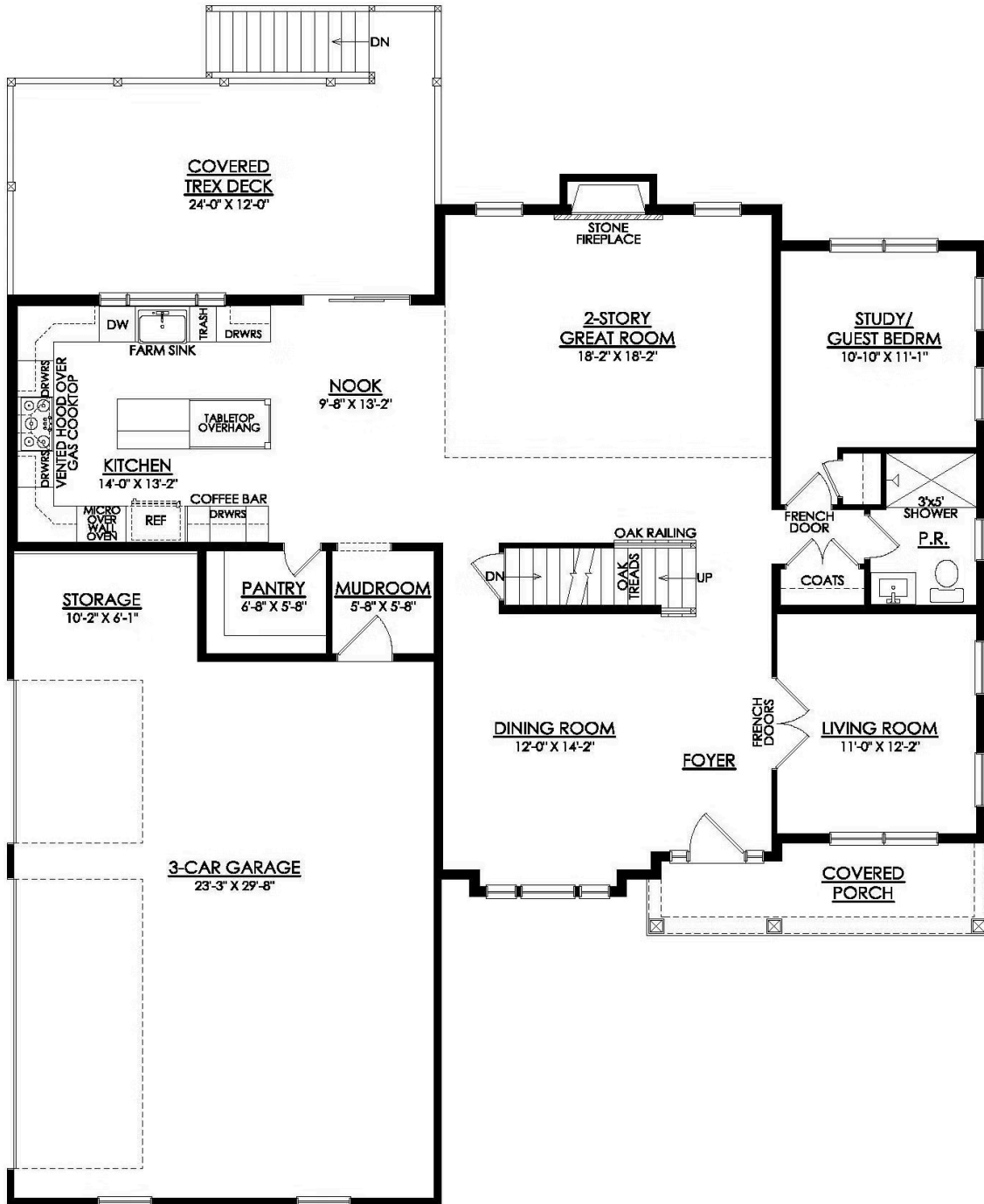
This stunning Breckenridge Grande in New Jersey features a thoughtfully enhanced layout with design elements unique to this new home. The main level centers around a dramatic 2-Story Great Room including a Fireplace with a stone-surround to the ceiling. The spacious Gourmet Kitchen features a 5-Burner gas cooktop, ample counter space and a Coffee Bar, and a large island ideal for ca...
Read More at tuskeshomes.com

HOME FEATURES

- Only New Jersey Location!
- Located on Cul-de-Sac
- 1 Acre Homesite
- 4 Bedrooms
- 4 Bathrooms
- 3-Car Garage
- 10.5' Walkout Basement with Rough-In for Future Full Bath
- 12'x24' Covered TREX Deck with LED Recessed Lighting and Scenic Views
- U-Shaped Kitchen with Coffee Bar, Tabletop Island, and Trash Bin and Drawer Bases
- Boxed Tray Ceiling and Enclosed Sitting Area in Owners' Bedroom
- 42" Cosmo Fireplace with Stone Surround to Ceiling and Bluestone Hearth
- Enhanced Living Room Layout with French Doors
- Oak Railing and Oak-Stained Treads
- Specialty Light Fixtures and Under-Cabinet Lighting
- Lopatcong Elementary
- Phillipsburg High School

6 SPRING COURT #50

Lehigh Valley, PA 18020



6 SPRING COURT #50

Lehigh Valley, PA 18020

