






2451 Fairway Lane #52

Lehigh Valley, PA 18020

HOME DETAILS

-  4 Beds
-  3.5 Baths
-  3,763 Sq Ft
-  2 Story
-  3 Car Garage



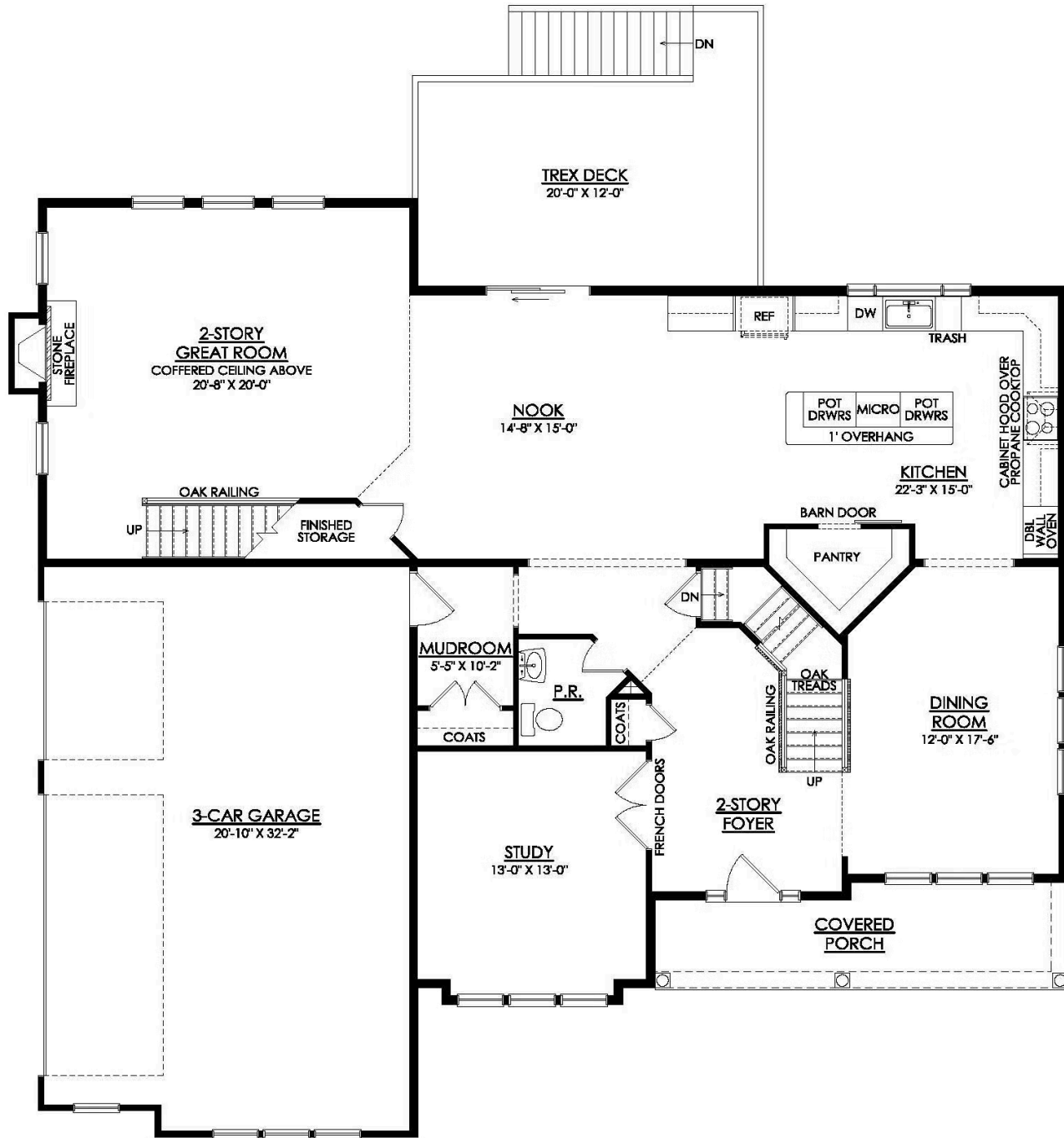
Discover this stunning Preakness Quick Delivery home! This home offers a magnificent layout with over 3,700 sq ft of luxurious space on nearly 2 acres in the Northampton School District. Enjoy the 2-Story Great Room, complete with a stone-surrounded Fireplace and Coffered Ceiling. The Gourmet Kitchen features a spacious walk-in Pantry with Barn Doors, ready to store all your culinary... Read More at tuskeshomes.com

HOME FEATURES

- 4 Bedrooms
- 3.5 Bathrooms
- 3-Car Garage
- 9' Walk-Out Basement with Rough-In for Future Full Bath
- Spacious 1.7 Acres Homesite
- Gourmet Kitchen including Walk-In Pantry with Barn Doors and Pot Drawers in Oversized Island
- Private Owners' Suite including Large Walk-In Closet
- Fully Tiled 4'x6' Shower with Bench in Owners' Bath
- Two-Story Great Room with Stone-Surrounded Fireplace and Coffered Ceiling
- 2nd Floor Laundry Room with Sink
- Walk-In Closets in Each Bedroom
- Oak Railings and Oak Stained Treads Throughout Home
- Finished Storage Under Great Room Stairs
- Premium Hardie® Fiber Cement Siding designed to withstand the harshest elements
- Northampton School District
- No HOA
- Steps from Southmoore Golf Course

2451 FAIRWAY LANE #52

Lehigh Valley, PA 18020



2451 FAIRWAY LANE #52

Lehigh Valley, PA 18020

