

Churchill Floor Plan

In The Enclave at Bushkill from **\$799,900**

PLAN DETAILS

Pricing from **\$799,900**

4 Beds 2.5 Baths 3,060 Sq Ft

2 Story 2 Car Garage



Farmhouse Elevation - Side Entry Garage

Discover the perfect family home in The Churchill! This beauty offers over 3000 sq ft of living space of elegance and comfort. The 2-story Great Room sets the tone of this open-concept floorplan, while the living room provides a warm and inviting space for gatherings. The gourmet Kitchen, complete with Dining Nook leading to the backyard, is a chef's dream with ample countertop space and a large island with room for seating. A formal dining room and study complete the main level. The second floor boasts a luxurious Owner's Suite with private Bath. Three additional Bedrooms, a shared hall Bath, and a conveniently located 2nd floor Laundry Room can also be found upstairs. Some images, videos, virtual tours shown may be from a previously built Tuskes home of similar design. Actual options ...
Read More at tuskeshomes.com

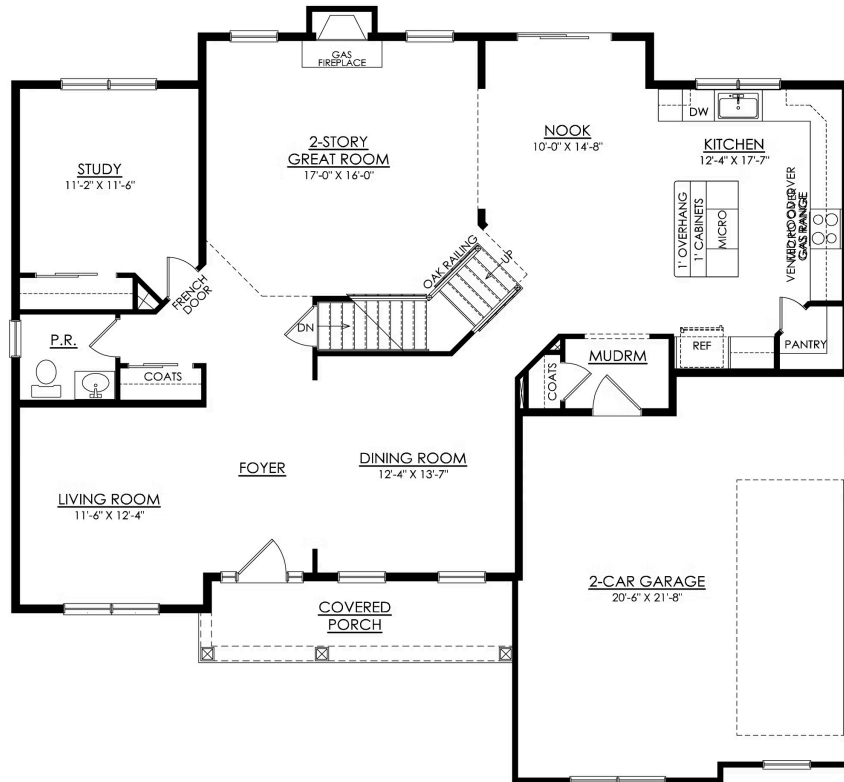
Churchill Floor Plan

In The Enclave at Bushkill from \$799,900



Churchill Floor Plan

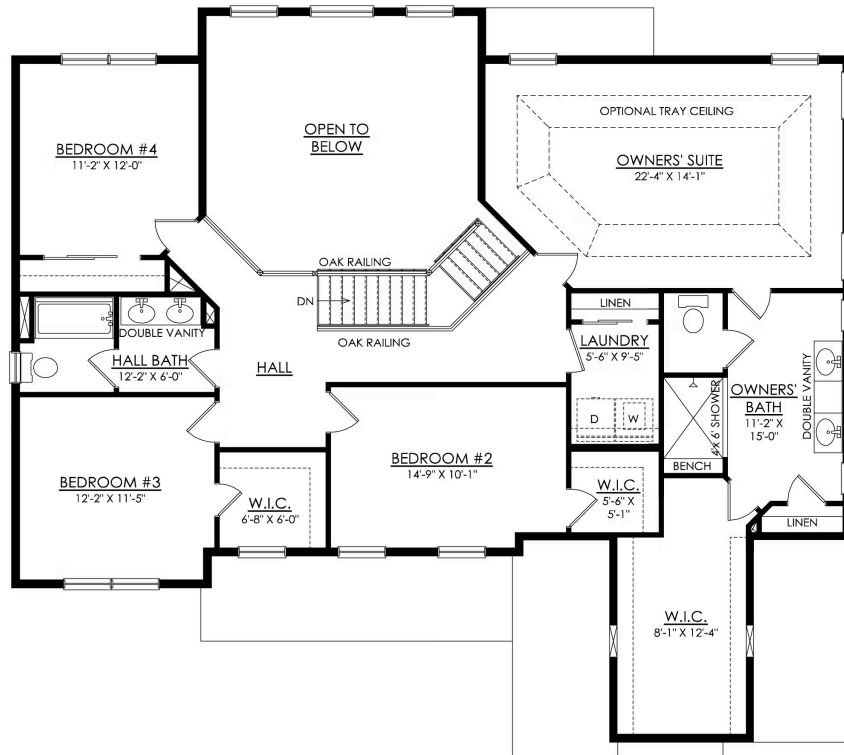
In The Enclave at Bushkill from \$799,900



CHURCHILL FARMHOUSE
1ST FLOOR PLAN
HERITAGE

Churchill Floor Plan

In The Enclave at Bushkill from \$799,900



CHURCHILL FARMHOUSE
2ND FLOOR PLAN
HERITAGE



Churchill Floor Plan

In The Enclave at Bushkill from **\$799,900**



Churchill Floor Plan

In The Enclave at Bushkill from **\$799,900**