

Preakness Floor Plan

In The Enclave at Bushkill from **\$899,900**

PLAN DETAILS

Pricing from **\$899,900**

 4 Beds  3.5 Baths  3,763 Sq Ft

 2 Story  3 Car Garage



Traditional Elevation

The Preakness floor plan offers a magnificent layout with over 3,700 sq ft of luxurious space. Step into the awe-inspiring two-story Foyer and Great Room, each with its own staircase. The Kitchen features a stunning island complete with an overhang bar that's perfect for entertaining. The walk-in Pantry and optional butler's pantry are within an arm's reach and ready to store all your culinary essentials. The adjacent dining Nook includes a sliding patio door that opens to the backyard, inviting the outdoors in for al fresco dining and unforgettable memories. A formal Dining Room, Living Room, private Study, and Powder Room complete the main living areas of this home. Upstairs, enjoy peace and quiet in the private Owner's Suite that features a dressing area, spacious walk-in closets, and a ... Read More at tuskeshomes.com

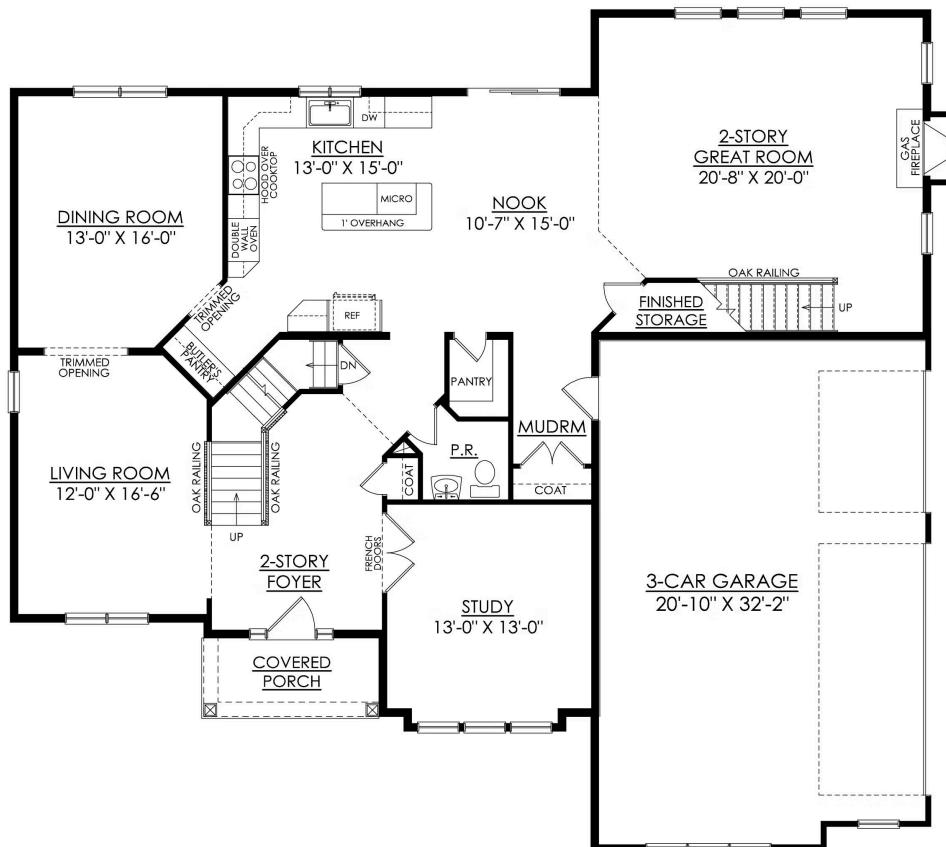
Preakness Floor Plan

In The Enclave at Bushkill from **\$899,900**



Preakness Floor Plan

In The Enclave at Bushkill from \$899,900

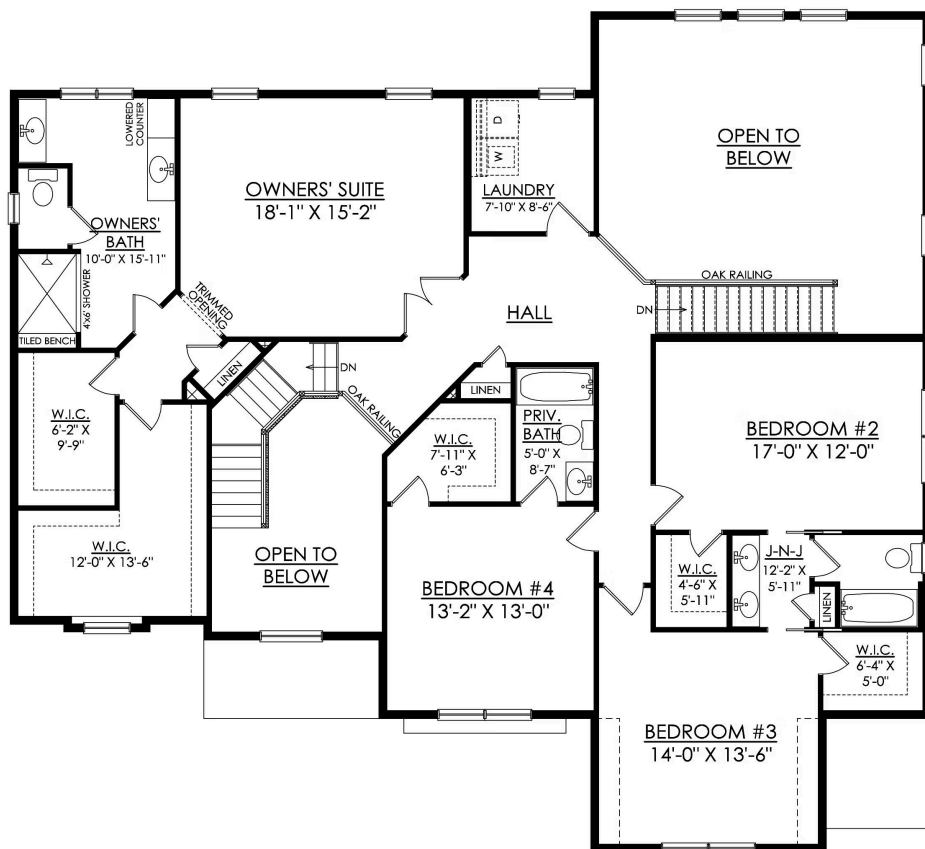


PREAKNESS TRADITIONAL
STARTING AT 3763 SF
ESTATES AT SAUCON VALLEY

1ST FLOOR PLAN

Preakness Floor Plan

In The Enclave at Bushkill from \$899,900



PREAKNESS TRADITIONAL
STARTING AT 3763 SF
ESTATES AT SAUCON VALLEY

2ND FLOOR PLAN



Preakness Floor Plan

In The Enclave at Bushkill from **\$899,900**



Preakness Floor Plan

In The Enclave at Bushkill from **\$899,900**



Preakness Floor Plan

In The Enclave at Bushkill from **\$899,900**



Preakness Floor Plan

In The Enclave at Bushkill from **\$899,900**



Preakness Floor Plan

In The Enclave at Bushkill from **\$899,900**