

Rockford Floor Plan

In The Enclave at Bushkill from **\$769,900**

PLAN DETAILS

Pricing from **\$769,900**

3 Beds 2.0 Baths 2,320 Sq Ft

1 Story 2 Car Garage



Craftsman Elevation

Introducing the Rockford, an inviting Ranch home designed for both comfort and style and offers a thoughtful layout that maximizes space and functionality. At the heart of the home, the open-concept design of the Great Room and Kitchen creates a welcoming atmosphere. With a grand cathedral ceiling and a wall of windows, there is a sense of openness so that no matter how many people visit, you will never feel cramped. The Owners' Suite tucked away in the back of the home includes two spacious Walk-In Closets, as well as its own ensuite bathroom for added privacy. The Rockford also features two additional Bedrooms that offer flexibility for guests, a home office, or other uses to suit your needs. With thoughtfully designed spaces and a layout that promotes flow and functionality, t ... Read More at tuskeshomes.com

PLAN FEATURES

- 3 Bedrooms
- 2 Baths
- 2-Car Garage
- Starting at 2,320 Square Feet
- Open Concept Great Room and Kitchen
- Kitchen Island with Quartz or Granite Countertops
- 42" Walk-in Kitchen Wall Cabinets with

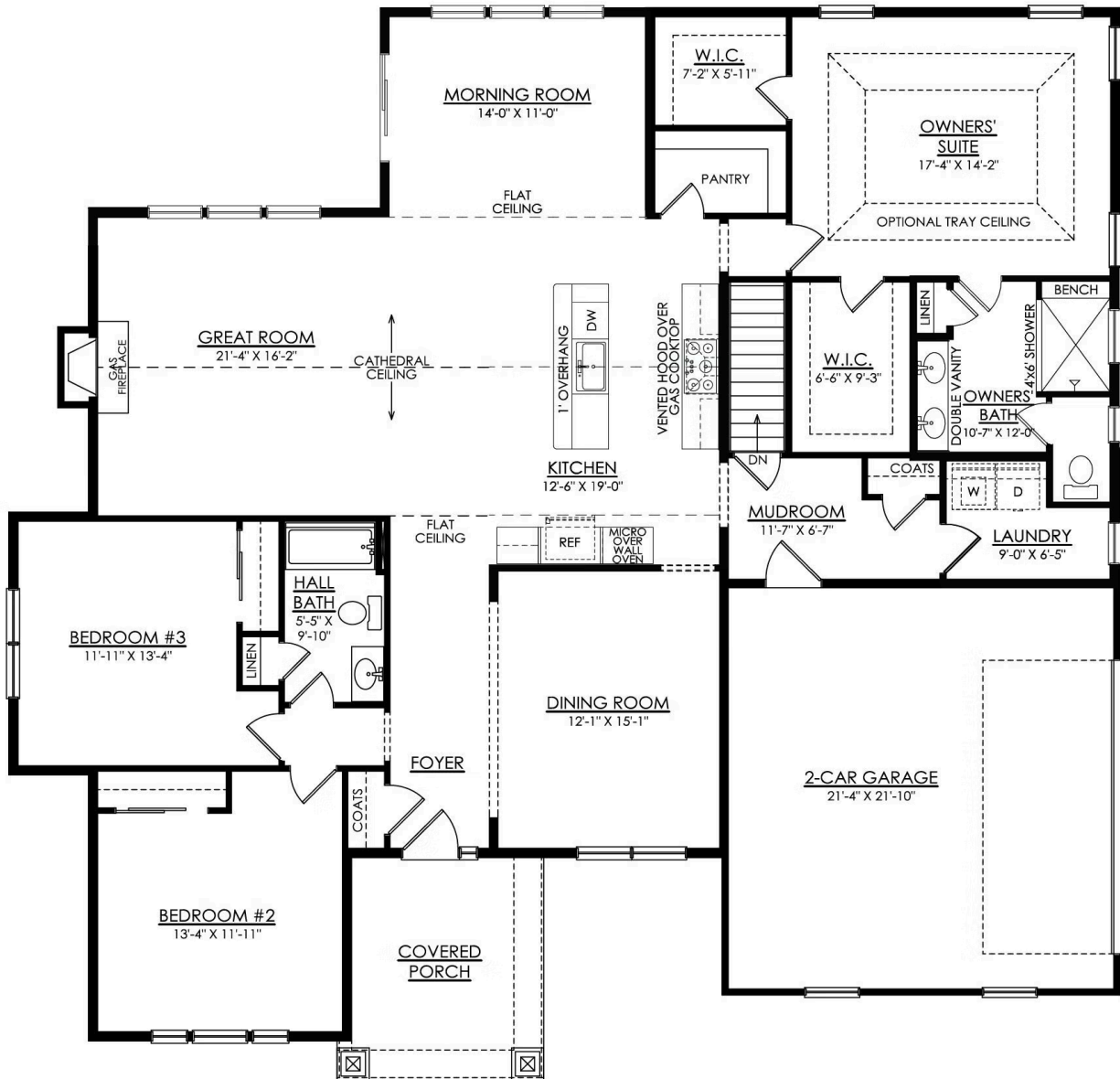
Rockford Floor Plan

In The Enclave at Bushkill from \$769,900



Rockford Floor Plan

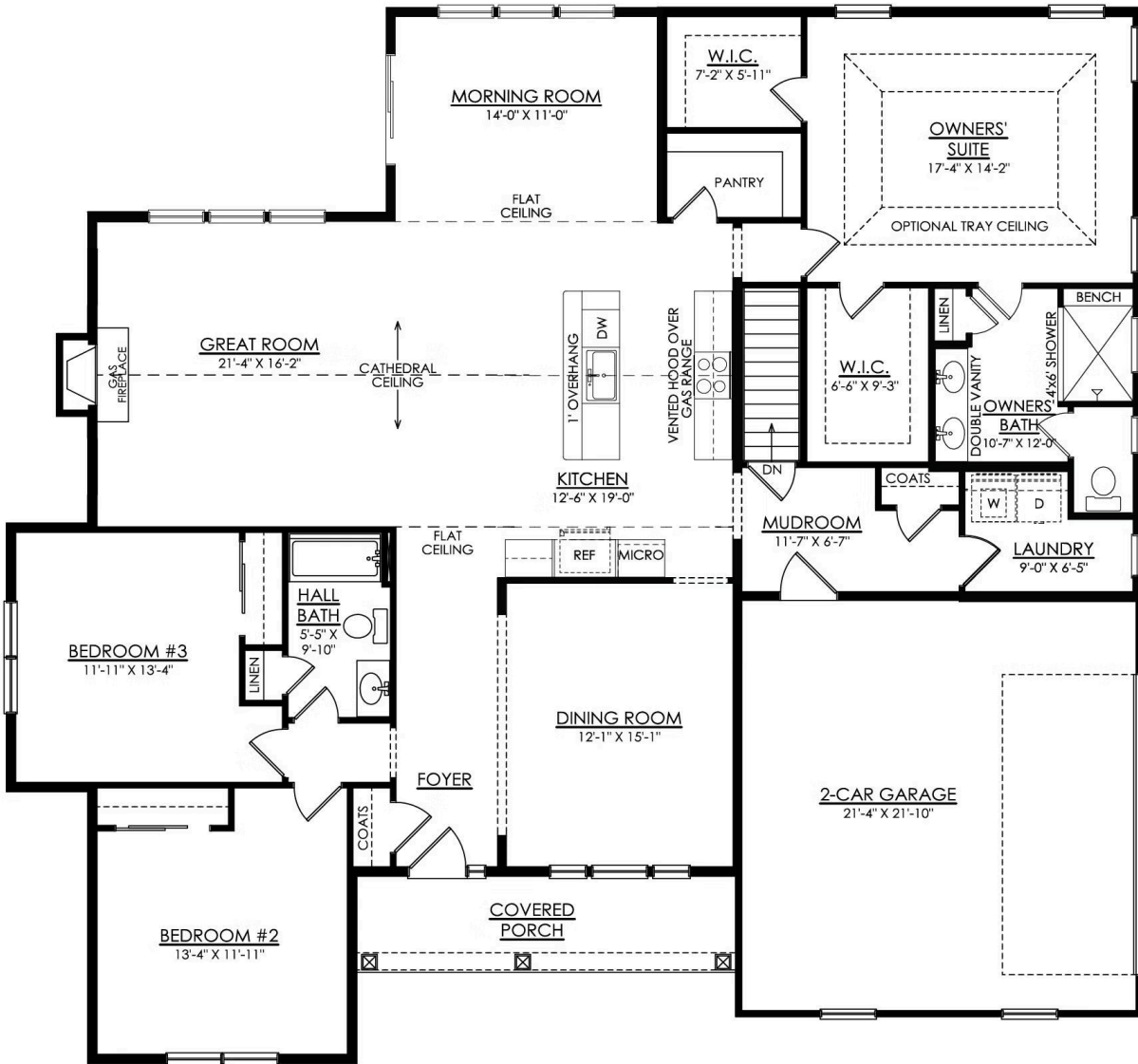
In The Enclave at Bushkill from \$769,900



ROCKFORD CRAFTSMAN 1ST FLOOR PLAN HERITAGE MORNING ROOM

Rockford Floor Plan

In The Enclave at Bushkill from \$769,900



ROCKFORD COTTAGE 1ST FLOOR PLAN HERITAGE MORNING ROOM