






2590 Stonewall Drive #60

Center Valley, PA 18034

HOME DETAILS

 4 Beds
  2.5 Baths
  3,060 Sq Ft
 2 Story
  2 Car Garage



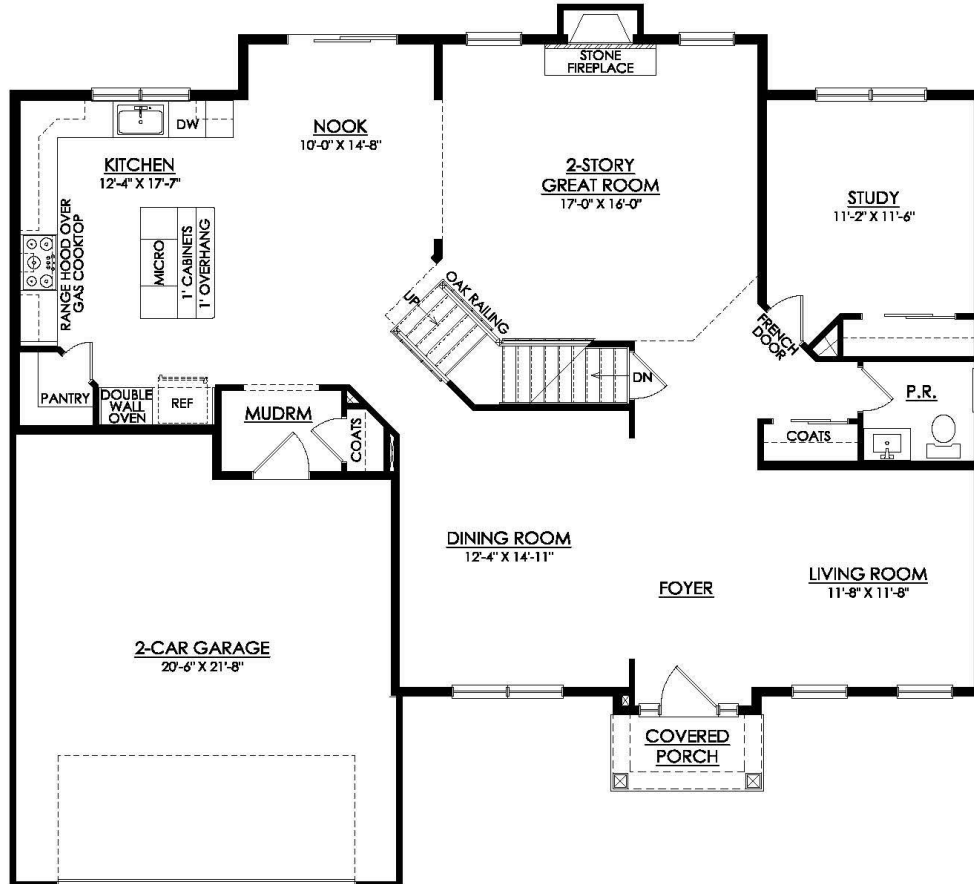
Discover the perfect family home in The Churchill! This beauty offers over 3000 sq ft of living space of elegance and comfort. The 2-story Great Room sets the tone of this open-concept floorplan, while the living room provides a warm and inviting space for gatherings. The gourmet Kitchen, complete with Dining Nook leading to the backyard, is a chef's dream with ample countertop space and... [Read More at tuskeshomes.com](http://tuskeshomes.com)

HOME FEATURES

- 4 Beds
- 2.5 Baths
- 2-Car Garage
- Spacious Owner's Walk-In Closet
- 2-Story Great Room including Gas Fireplace with Stone Surround
- Enhanced Painted and Stained Steps with Sq Newel Posts and Iron Rod Square Balusters
- Kitchen including Level 2 Silestone Counters and 36" Cooktop with 36" Stainless Steel Hood Vented to Outside
- Dual Cabinet Colors and Enhanced Hardware in Kitchen and Bathrooms
- Full Basement with Rough-In Plumbing

2590 STONEWALL DRIVE #60

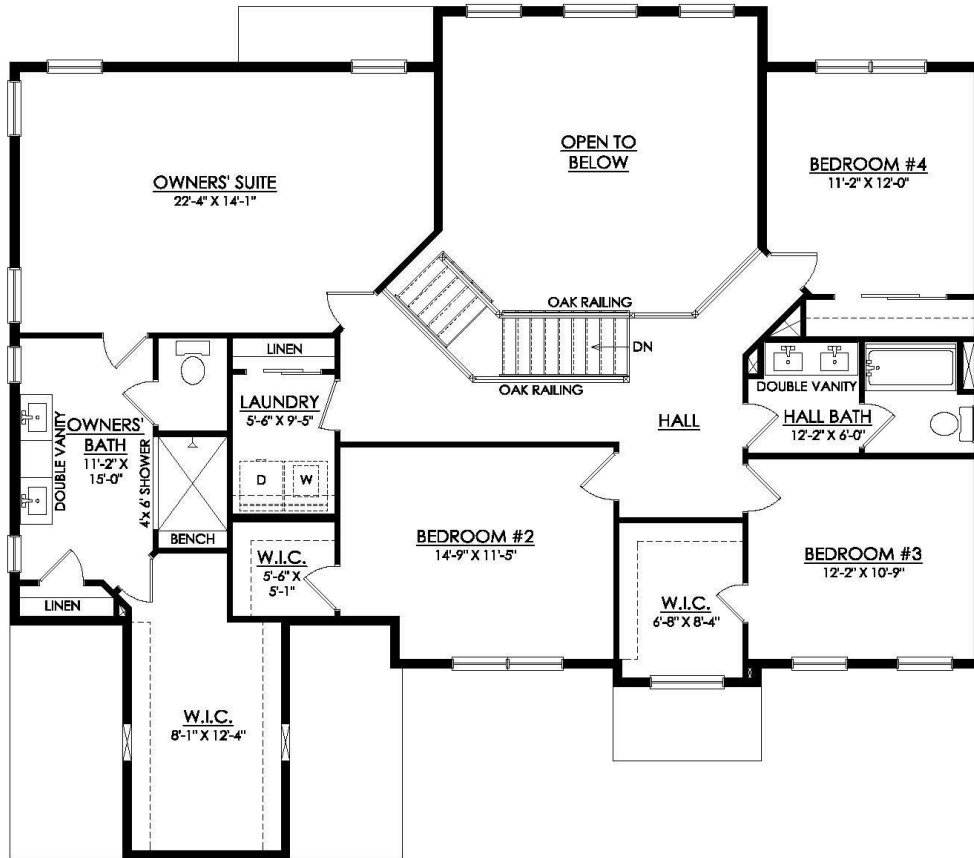
Center Valley, PA 18034



CHURCHILL TRADITIONAL
1ST FLOOR PLAN
SV60

2590 STONEWALL DRIVE #60

Center Valley, PA 18034



CHURCHILL TRADITIONAL
2ND FLOOR PLAN
SV60