

# Churchill Floor Plan

In Estates at Saucon Valley from \$843,900

## PLAN DETAILS

Pricing from \$843,900

4 Beds
 2.5 Baths
 3,060 Sq Ft  
 2 Story
 2 Car Garage



Farmhouse Elevation - Side Entry Garage

Discover the perfect family home in The Churchill!! This beauty offers over 3000 sq ft of living space of elegance and comfort. The 2-story Great Room sets the tone of this open-concept floorplan, while the living room provides a warm and inviting space for gatherings. The gourmet Kitchen, complete with Dining Nook leading to the backyard, is a chef's dream with ample countertop space and a large island with room for seating. A formal dining room and study complete the main level. The second floor boasts a luxurious Owner's Suite with private Bath. Three additional Bedrooms, a shared hall Bath, and a conveniently located 2nd floor Laundry Room can also be found upstairs. Some images, videos, virtual tours shown may be from a previously built Tuskes home of similar design. Actual options ... Read More at [tuskeshomes.com](https://tuskeshomes.com)

# Churchill Floor Plan

In Estates at Saucon Valley from \$843,900



# Churchill Floor Plan

In Estates at Saucon Valley from \$843,900



**CHURCHILL FARMHOUSE**  
STARTING AT 3060 SF  
ESTATES AT SAUCON VALLEY

1ST FLOOR PLAN

# Churchill Floor Plan

In Estates at Saucon Valley from \$843,900

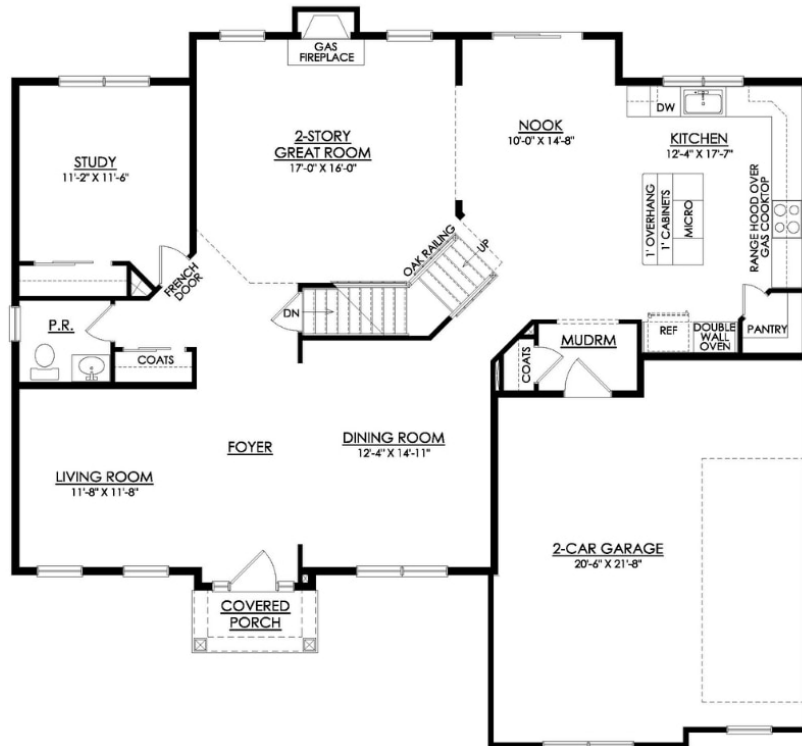


**CHURCHILL FARMHOUSE**  
STARTING AT 3060 SF  
ESTATES AT SAUCON VALLEY

2ND FLOOR PLAN

# Churchill Floor Plan

In Estates at Saucon Valley from \$843,900



**CHURCHILL TRADITIONAL**  
STARTING AT 3110 SF  
ESTATES AT SAUCON VALLEY

1ST FLOOR PLAN

# Churchill Floor Plan

In Estates at Saucon Valley from \$843,900



**CHURCHILL TRADITIONAL**  
STARTING AT 3110 SF  
ESTATES AT SAUCON VALLEY

**2ND FLOOR PLAN**