

Maverick Floor Plan

In Estates at Saucon Valley from \$1,049,900

PLAN DETAILS

Pricing from \$1,049,900

5 Beds
 4.5 Baths
 4,113 Sq Ft
 2 Story
 3 Car Garage



Traditional Elevation

The Maverick is an architectural gem that embodies modern farmhouse style with its spacious 4100 sq ft. floor plan. Ideal for multi-generational living, this home boasts multiple common areas and bedrooms on both floors, allowing for maximum comfort and convenience. Its sleek, contemporary design seamlessly integrates function and style, making it the perfect place for families to create lasting memories. Step into the charming Foyer and be welcomed into its magnificent living spaces. The Kitchen features ample counter space, a large island with seating, and a walk-in Pantry. The nearby Great Room is anchored by a cozy gas fireplace, windows with backyard views, and opens to a formal Dining Room. The Family Room is a luxurious escape with cathedral ceilings, a sliding door leading to ... Read More at tuskeshomes.com

PLAN FEATURES

- 5 Bedrooms
- 4.5 Bathrooms
- 3-Car Garage
- Starting at 4133 Square Feet
- Granite or Quartz Kitchen Countertops
- Stainless Steel Double Oven, Range, Microwave, and Dishwasher
- Great Room with Gas Fireplace
- Family Room with Gas Fireplace and Cathedral Ceiling
- Study
- Mudroom with Walk-in Closet
- 1st Floor Guest Suite
- Private Owner's Suite
- 2nd Floor Loft
- 2nd Floor Laundry Room

Maverick Floor Plan

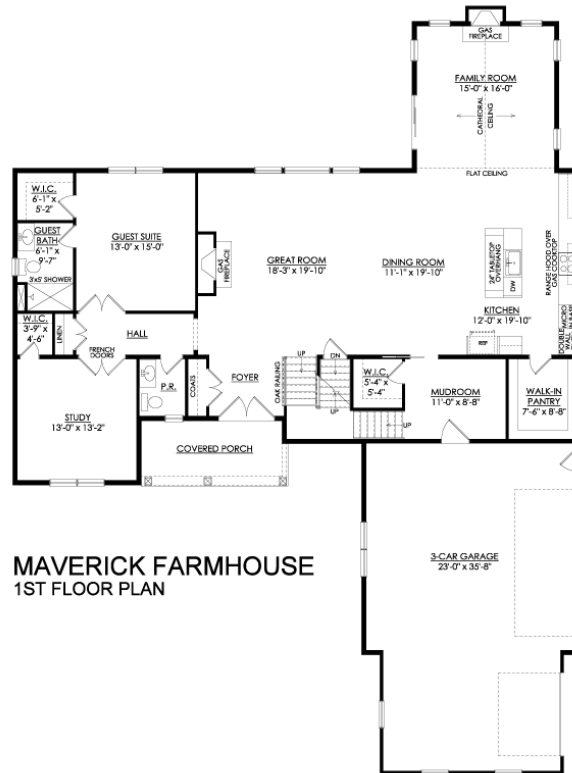
In Estates at Saucon Valley from \$1,049,900



Famhouse Elevation

Maverick Floor Plan

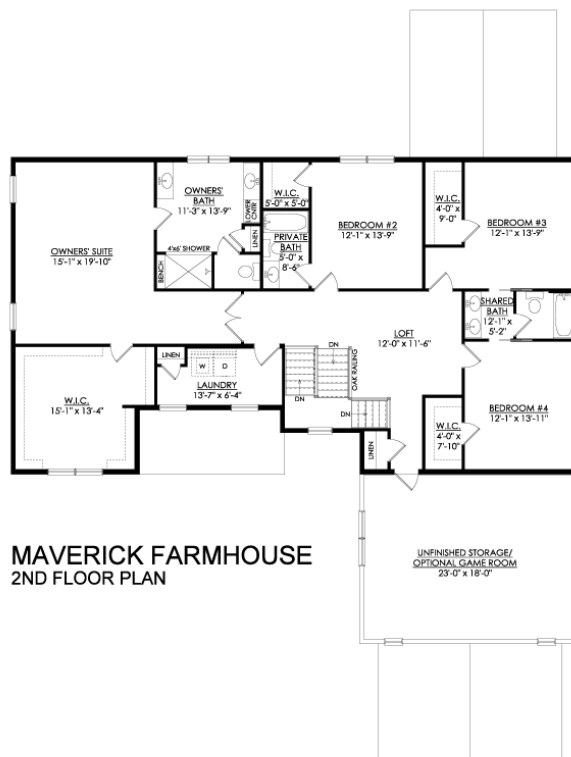
In Estates at Saucon Valley from \$1,049,900



MAVERICK FARMHOUSE
1ST FLOOR PLAN

Maverick Floor Plan

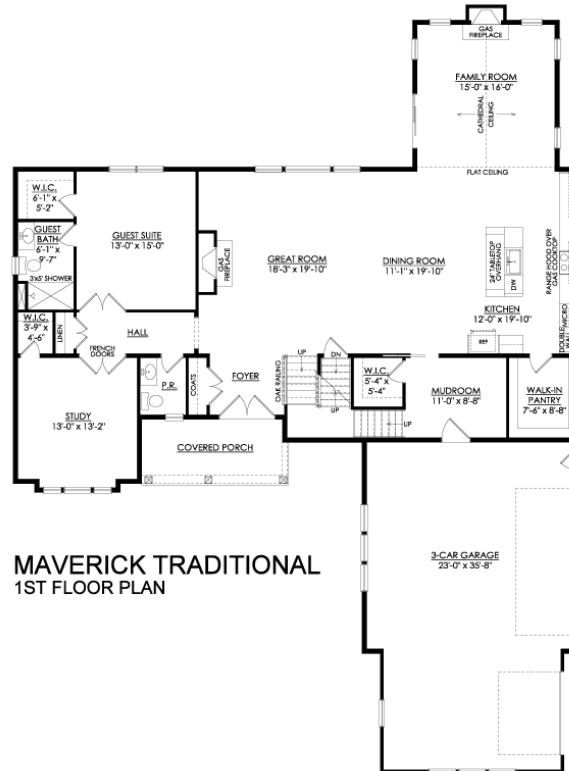
In Estates at Saucon Valley from \$1,049,900



MAVERICK FARMHOUSE
2ND FLOOR PLAN

Maverick Floor Plan

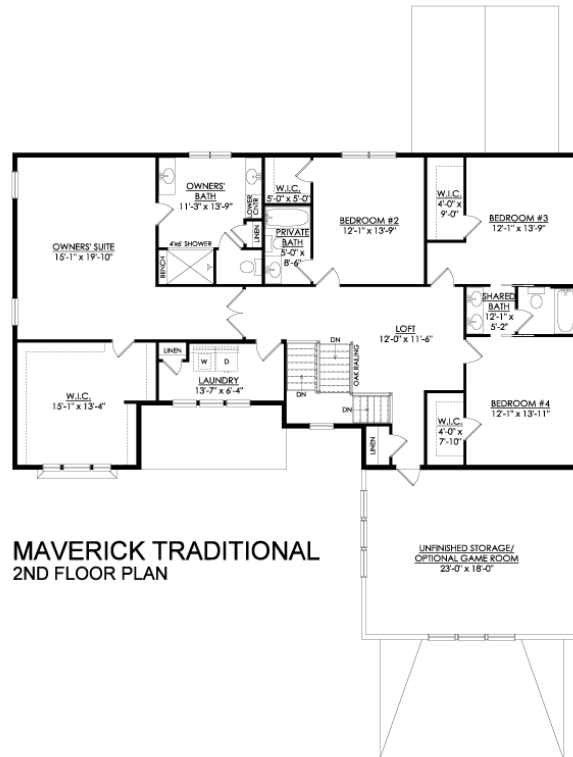
In Estates at Saucon Valley from \$1,049,900



MAVERICK TRADITIONAL
1ST FLOOR PLAN

Maverick Floor Plan

In Estates at Saucon Valley from \$1,049,900



MAVERICK TRADITIONAL
2ND FLOOR PLAN