

# Meridian Floor Plan

In Estates at Saucon Valley from \$799,900

PLAN DETAILS  
Pricing from \$799,900

- 🛏 4 Beds
- 🛁 2.5 Baths
- 🏠 2,820 Sq Ft
- 🏡 2 Story
- 🚗 2 Car Garage



Craftsman Elevation – Side Entry Garage

Step into opulence with The Meridian, a stunning floorplan starting at 2820 sq ft. The Kitchen boasts a large island with seating, granite or quartz countertops, and a dining Nook surrounded by windows. The main level also includes a spacious Great Room, formal Dining Room, Private Study with French doors, Powder Room, Mudroom, and welcoming Foyer. Upstairs, the Owner's Suite features double doors and 2 walk-in closets with an attached Owner's Bath. 3 additional bedrooms, a shared hall bath, and a 2nd floor Laundry Room complete the layout. For even more space, consider the optional Bonus Room above the Garage, perfect for a 5th Bedroom, second Home Office, or Play Room. Some images, videos, virtual tours shown may be from a previously built Tuskes home of similar design. Actual option ... Read More at [tuskeshomes.com](https://tuskeshomes.com)

# Meridian Floor Plan

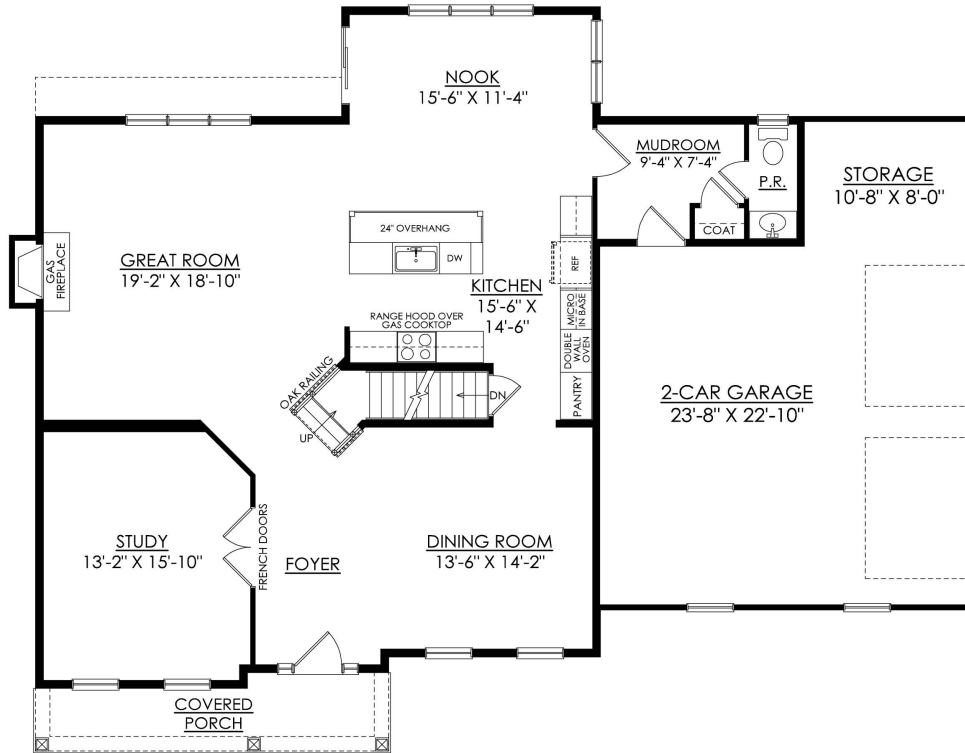
In Estates at Saucon Valley from \$799,900



Farmhouse Elevation - Side Entry Garage

# Meridian Floor Plan

In Estates at Saucon Valley from \$799,900

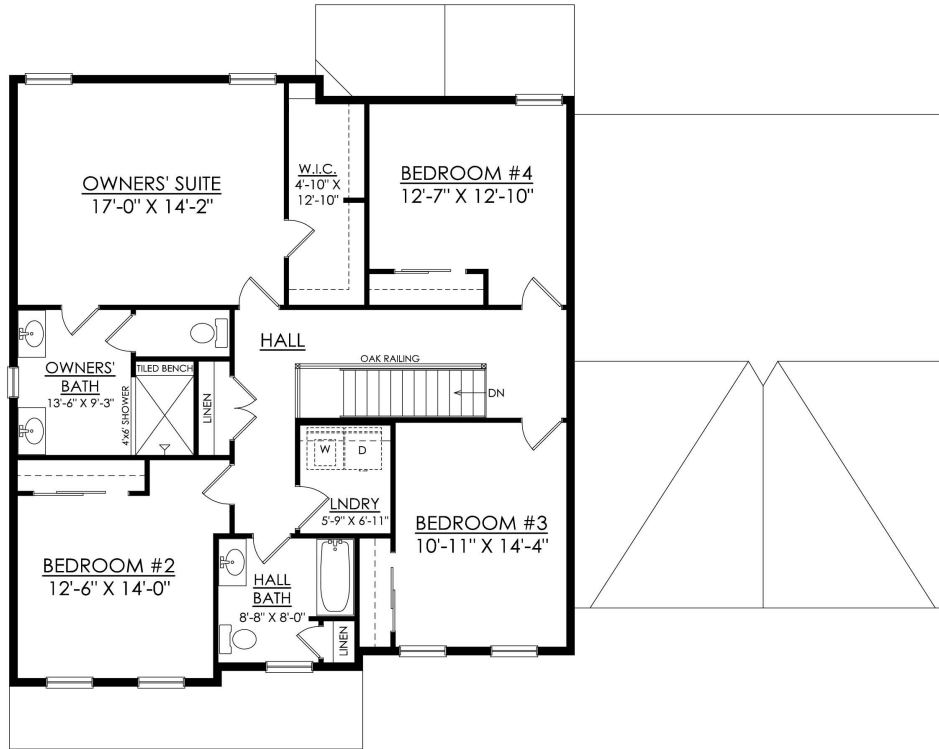


**MERIDIAN CRAFTSMAN**  
STARTING AT 2848 SF  
ESTATES AT SAUCON VALLEY

1ST FLOOR PLAN

# Meridian Floor Plan

In Estates at Saucon Valley from \$799,900

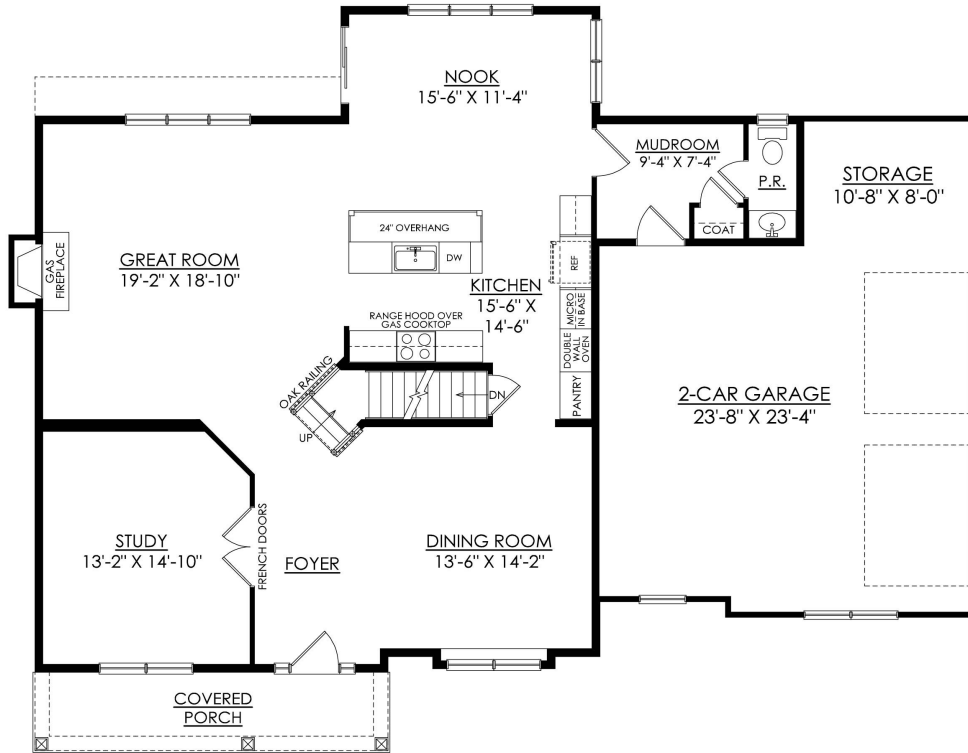


**MERIDIAN CRAFTSMAN**  
STARTING AT 2848 SF  
ESTATES AT SAUCON VALLEY

2ND FLOOR PLAN

# Meridian Floor Plan

In Estates at Saucon Valley from \$799,900

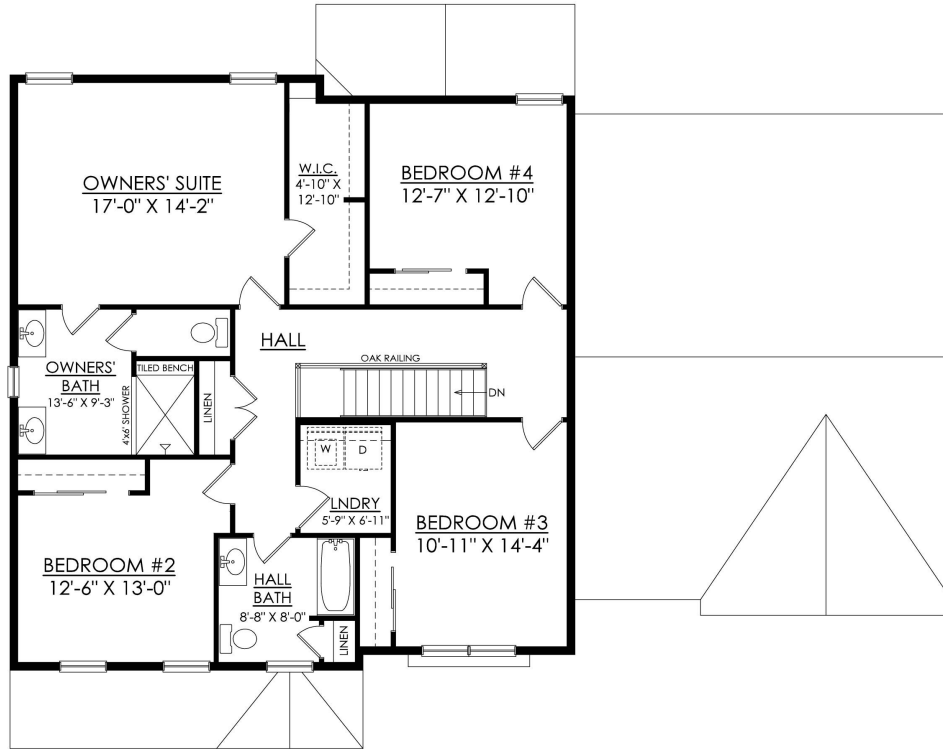


**MERIDIAN FARMHOUSE**  
STARTING AT 2820 SF  
ESTATES AT SAUCON VALLEY

**1ST FLOOR PLAN**

# Meridian Floor Plan

In Estates at Saucon Valley from \$799,900



**MERIDIAN FARMHOUSE**  
STARTING AT 2820 SF  
ESTATES AT SAUCON VALLEY

2ND FLOOR PLAN

# Meridian Floor Plan

In Estates at Saucon Valley from \$799,900

