






Sienna Floor Plan

In Estates at Saucon Valley from \$837,900

PLAN DETAILS

Pricing from \$837,900

-  4 Beds
-  2.5 Baths
-  2,828 Sq Ft
-  2 Story
-  2 Car Garage

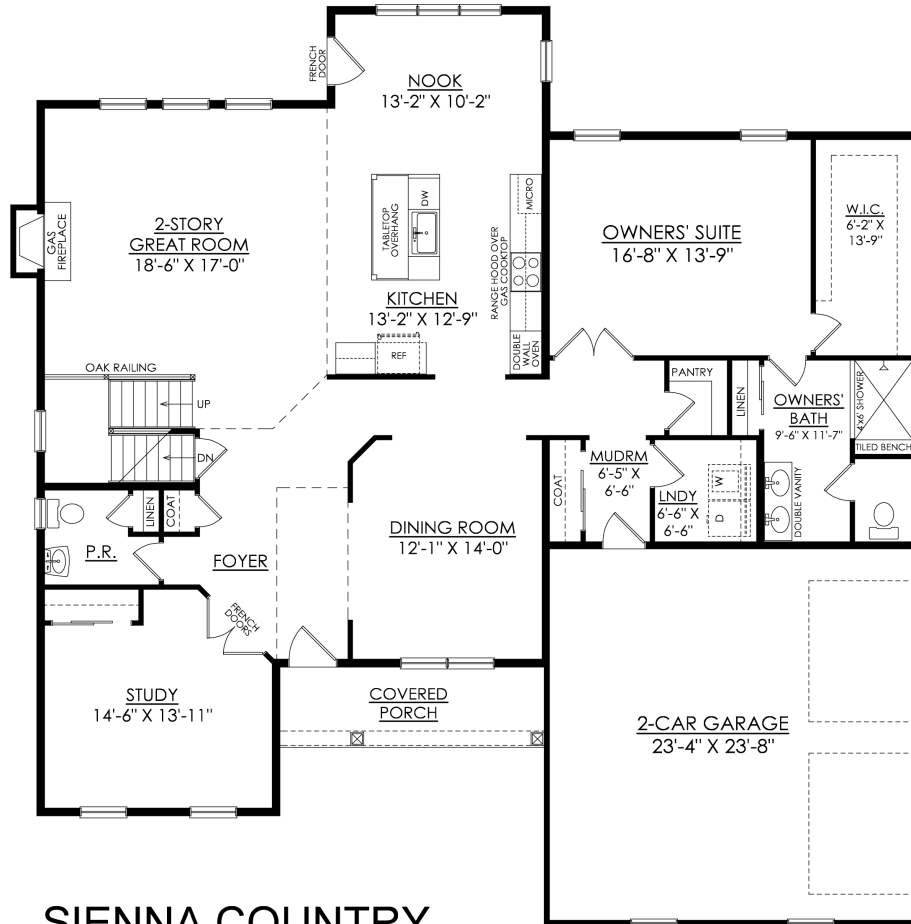


Country Elevation – Side Entry Garage

Live in luxury and style with the spacious Sienna, featuring an open-concept open living space that's designed for entertaining. The Kitchen boasts generous countertop space and a spacious island. Dine in elegance in the formal Dining Room or cozy Nook. The 2-story Great Room features a relaxing fireplace, making it the perfect spot to unwind or host family and friends. The private Study, separated by double doors, provides a quiet place to work or learn from home when needed. Step into the first-floor Owner's Suite, complete with a sitting area and a private bath retreat. On the second floor, there are three additional bedrooms and a shared hall bath for the family. For added flexibility, this plan also features an optional first-floor In-Law Suite, which relocates the Owner's suite upstairs. Read More at tuskeshomes.com

Sienna Floor Plan

In Estates at Saucon Valley from \$837,900

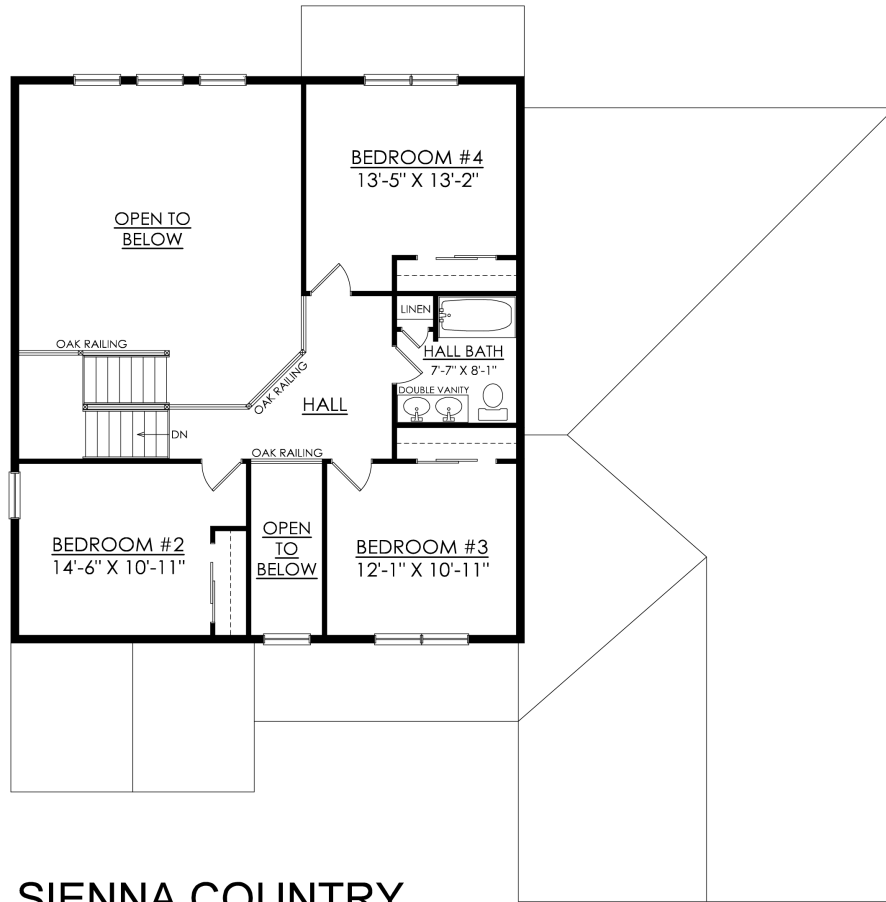


SIENNA COUNTRY
STARTING AT 2828 SF
ESTATES AT SAUCON VALLEY

1ST FLOOR PLAN

Sienna Floor Plan

In Estates at Saucon Valley from \$837,900

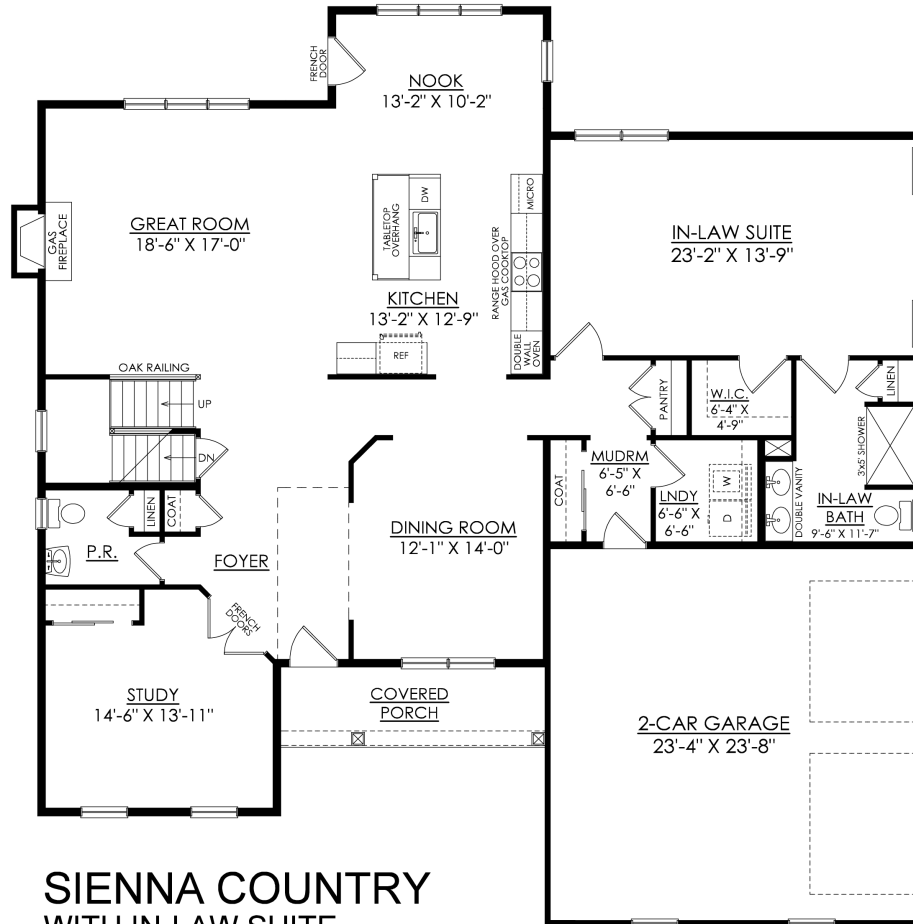


SIENNA COUNTRY
STARTING AT 2828 SF
ESTATES AT SAUCON VALLEY

2ND FLOOR PLAN

Sienna Floor Plan

In Estates at Saucon Valley from \$837,900

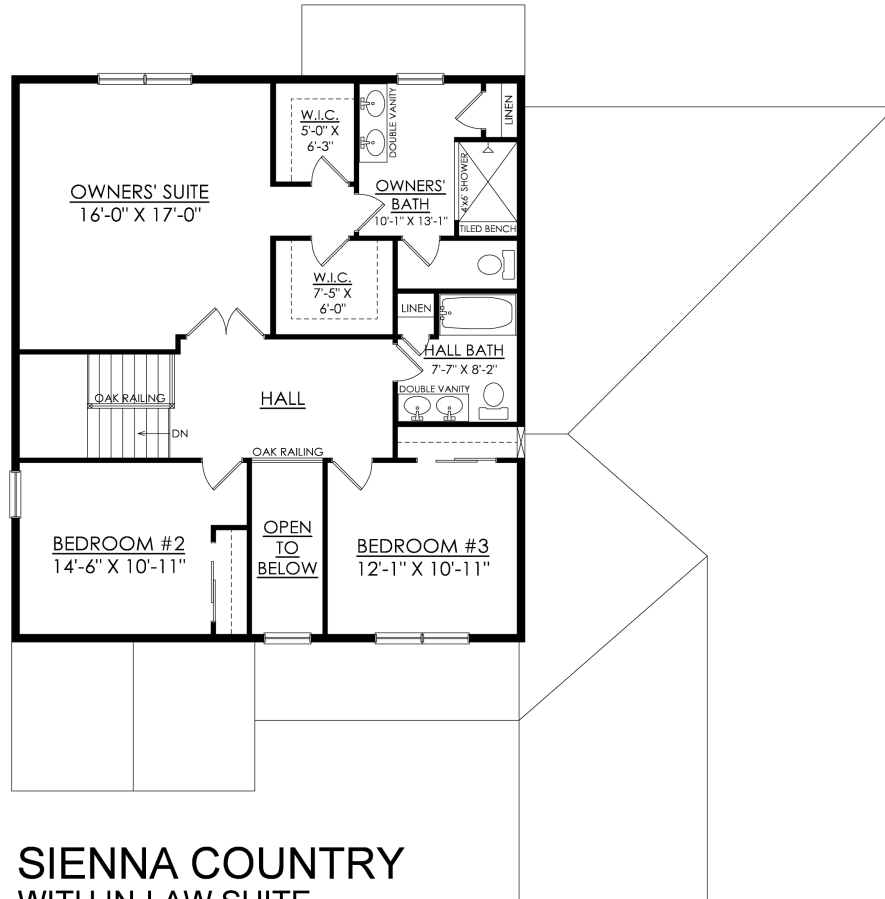


**SIENNA COUNTRY
WITH IN-LAW SUITE
STARTING AT 3175 SF
ESTATES AT SAUCON VALLEY**

1ST FLOOR PLAN

Sienna Floor Plan

In Estates at Saucon Valley from \$837,900



SIENNA COUNTRY
WITH IN-LAW SUITE
STARTING AT 3175 SF
ESTATES AT SAUCON VALLEY

2ND FLOOR PLAN