

212 Long Run Road #N6

Drums, PA 18222

HOME DETAILS

- 3 Beds
- 2.5 Baths
- 1,838 Sq Ft
- 2 Story
- 2 Garage



Birchwood 2-Car Garage Elevation

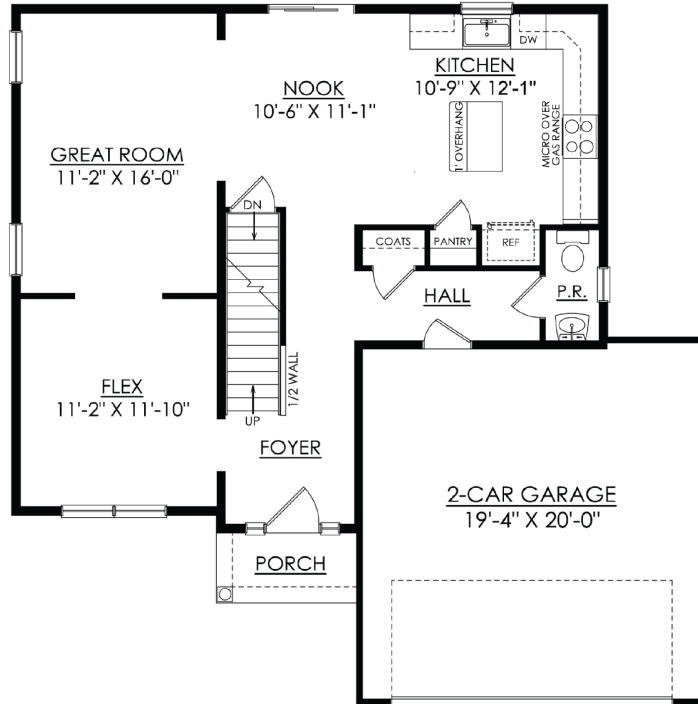
The Birchwood offers a convenient, thoughtful layout as well as a charming exterior. Enjoy a main living area that makes hosting and interacting with guests a breeze. The Kitchen, Dining Nook, and Great Room are all open and connected, maximizing this home's living space. The Kitchen offers plenty of counter space and an undermount sink, along with an island for additional meal prep spac... [Read More at tuskeshomes.com](http://tuskeshomes.com)

HOME FEATURES

- Luxury Plank Vinyl flooring throughout the main living areas.
- 2-Car Garage
- Granite Kitchen Countertops
- Ceramic tile flooring in Full Bathrooms
- Premium Homesite with 7'-10" Walkout Basement

212 LONG RUN ROAD #N6

Drums, PA 18222

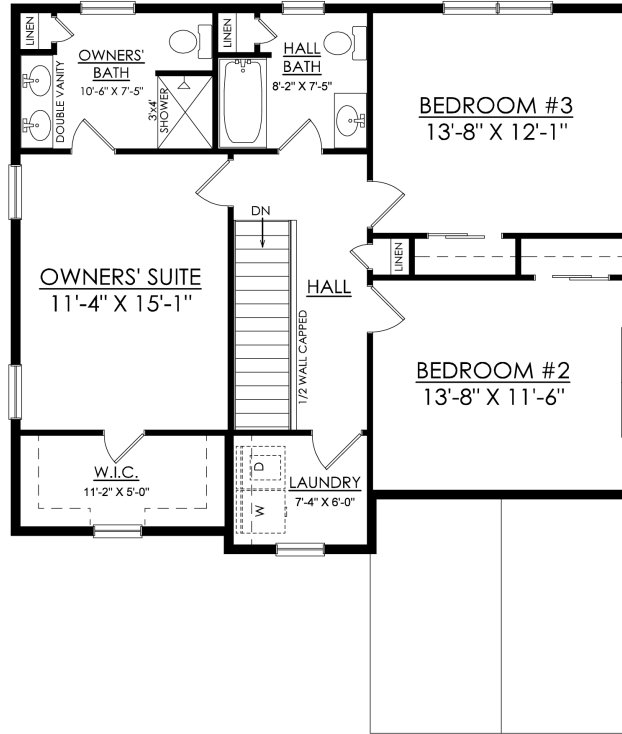


BIRCHWOOD
w/ 2-CAR GARAGE
STARTING AT 1838 SF

1ST FLOOR PLAN

212 LONG RUN ROAD #N6

Drums, PA 18222



BIRCHWOOD
STARTING AT 1838 SF

2ND FLOOR PLAN