

# 350 Long Run Road #56

Drums, PA 18222

## HOME DETAILS

4 Beds 2.5 Baths 2,392 Sq Ft

2 Story 2 Car Garage



Traditional Elevation

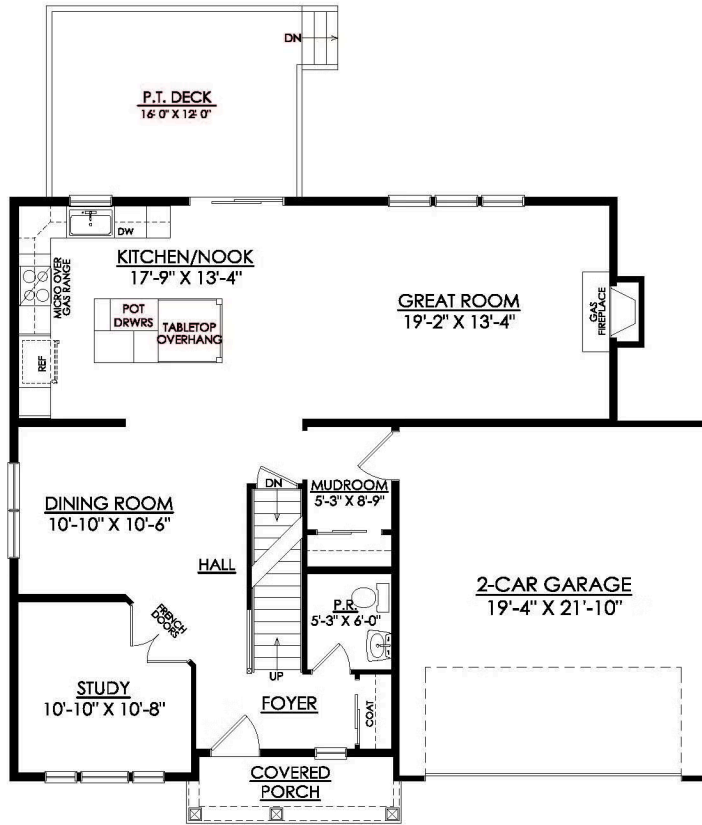
Discover this Quick Delivery Madison at Sand Springs in Drums! A favorite for good reason, this 4-bedroom, 2-story home offers 2,392 square feet of living space. The open-concept main level connects the Dining Room, Kitchen with Nook, and Great Room into one easy, welcoming space, so the cook is never far from the conversation. An extended tabletop island gives you room for quick breakfast... Read More at [tuskeshomes.com](http://tuskeshomes.com)

## HOME FEATURES

- 4 Beds
- 2.5 Baths
- 2 Car Garage
- 12' X 16' Pressure Treated Wood Deck w/ Steps to Grade
- 4x6 Shower with Tile Walls & Floor with Quartz Bench in Owners' Bath
- Double Vanity in Owners' Bath
- Extended Tabletop Island with 2 Legs
- Room Accent Lighting Package Includes 4 LED Recessed Lights in Great Room, Owners' Suite, & Kitchen
- 40" Direct Vent Fireplace with Slate Surround and Painted Mantel

# 350 LONG RUN ROAD #56

Drums, PA 18222



## MADISON TRADITIONAL 1ST FLOOR PLAN

# 350 LONG RUN ROAD #56

Drums, PA 18222



## MADISON TRADITIONAL 2ND FLOOR PLAN