

372 Long Run Road #42B-2

Drums, PA 18222

HOME DETAILS

3 Beds
 2.5 Baths
 1,495 Sq Ft
 2 Story
 1 Car Garage



Craftsman Elevation

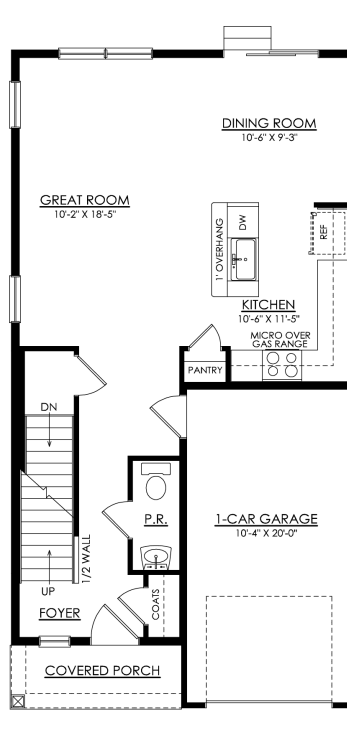
The Towns at Woods Edge are a new townhome design boasting a elegant, spacious, and functional floorplan. Step into your open concept first floor with a Kitchen that provides a number of convenient features. A large island complete with an overhang for additional seating, plenty of counter space, and a large pantry are all included in this Kitchen's layout. The open-concept Great Room and... Read More at tuskeshomes.com

HOME FEATURES

- 3 Bedrooms
- 2.5 Bathrooms
- 1-Car Garage
- 1510 Square Feet
- Open-Concept First Floor
- Kitchen Island with Overhang for Seating
- Quartz Kitchen Countertops
- Recessed Lighting in Kitchen
- Owner's Suite with Private Bathroom
- Second Floor Laundry Room

372 LONG RUN ROAD #42B-2

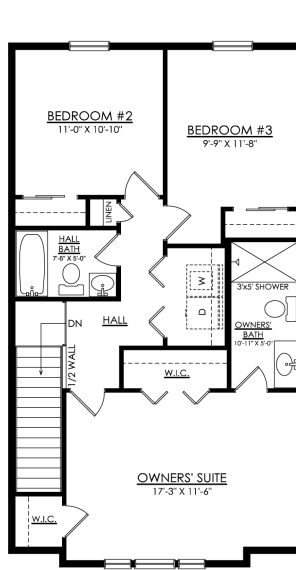
Drums, PA 18222



SS TWINS- 1ST FLOOR
STARTING AT 1495 SF

372 LONG RUN ROAD #42B-2

Drums, PA 18222



SS TWINS- 2ND FLOOR
COTTAGE ELEVATION
STARTING AT 1510 SF



SS TWINS- 2ND FLOOR
CRAFTSMAN ELEVATION
STARTING AT 1495 SF

372 LONG RUN ROAD #42B-2

Drums, PA 18222

Woods Edge Craftsman

Sand Springs

Homesite #WE-42B-2

372 Long Run Road, Drums PA 18222

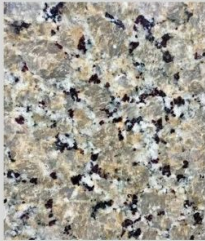


EXTERIOR

KITCHEN



COUNTERTOPS



CABINETS



FLOORING

LUXURY VINYL PLANK



CARPET

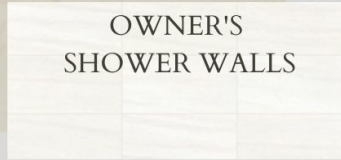


BATHROOMS

TILE FLOORS



OWNER'S
SHOWER WALLS



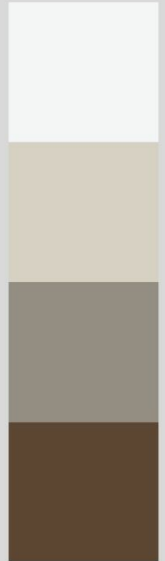
CABINETS



LIGHTING



COUNTERTOPS



Disclaimer: Although every effort is made to show an accurate representation, actual products may vary in color.