






387 Long Run Road #34B

Drums, PA 18222

HOME DETAILS

 3 Beds
  2.5 Baths
  1,780 Sq Ft
 2 Story
  2 Car Garage



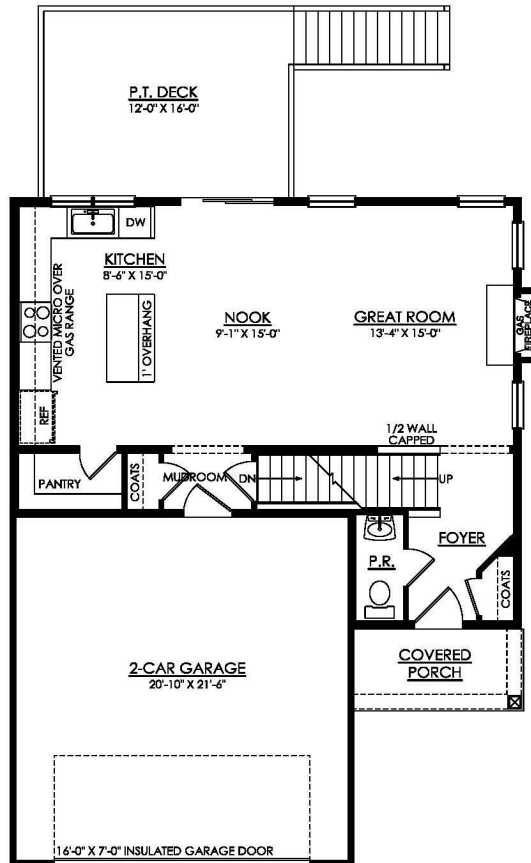
Welcome to the Lily, a where comfort and convenience come together in a beautifully designed floor plan. Upon entering the Foyer, you'll find a spacious Great Room that flows seamlessly into a cozy Dining Nook and modern Kitchen. This open-concept layout, featuring a sliding door that leads to the outdoors, provides ample space for entertaining family and friends while maintaining a... [Read More at tuskeshomes.com](https://www.tuskeshomes.com)

HOME FEATURES

- 3 Bedrooms
- 2.5 Bathrooms
- 2-Car Garage
- 8' Walkout Basement
- 12' x 16' Pressure Treated Wood Deck
- Owner's Suite with Private Bath and Two Walk-In Closets
- Gas Fireplace with Slate Surround
- Granite Kitchen Countertops with Moen Brantford Faucet
- Accent Lighting Package in Kitchen, including 2 Pendants over Island and 4 Recessed Lights
- 2nd Floor Laundry
- Low-Maintenance Living

387 LONG RUN ROAD #34B

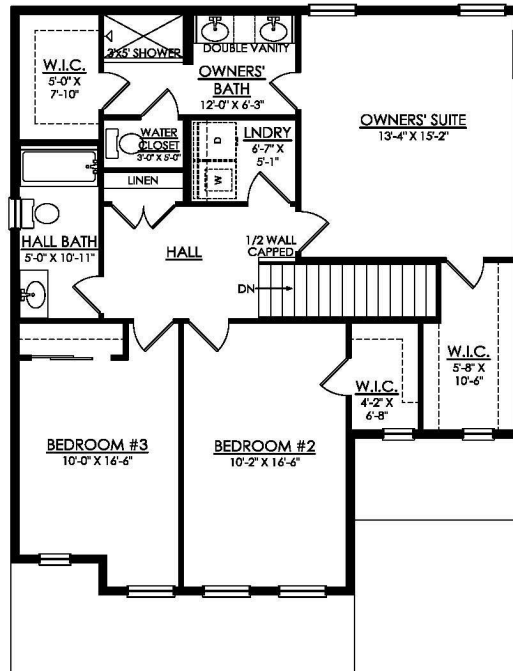
Drums, PA 18222



LILY
1ST FLOOR PLAN
SAND SPRINGS- SS34B

387 LONG RUN ROAD #34B

Drums, PA 18222



LILY
2ND FLOOR PLAN
SAND SPRINGS- SS34B