

53 Reserve Drive #39

Drums, PA 18222

HOME DETAILS

2 Beds 2.0 Baths 1,412 Sq Ft

1 Story 2 Car Garage



Azalea

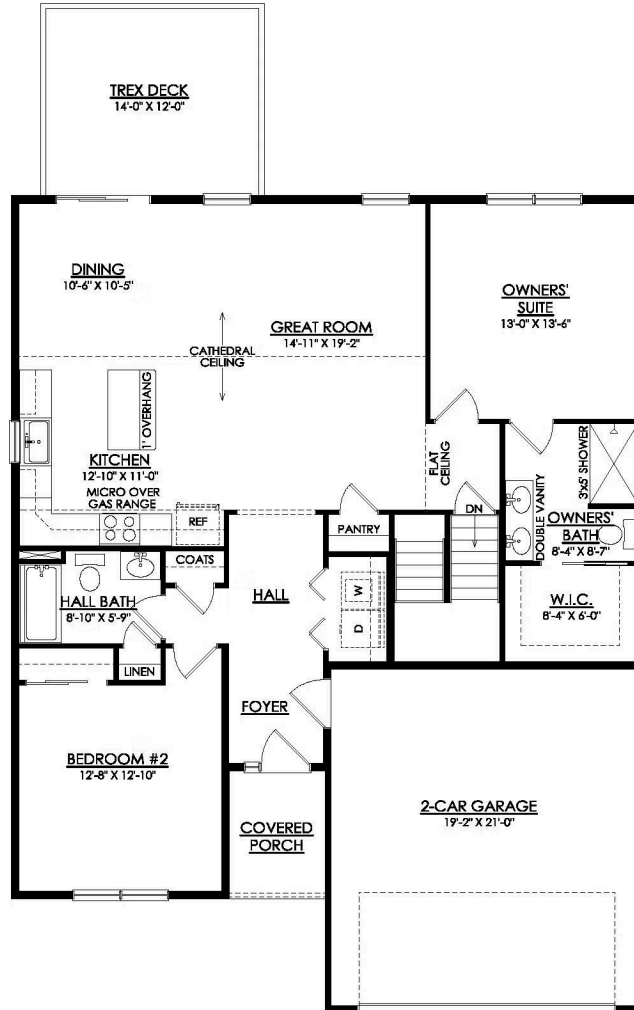
Discover this Quick Delivery Azalea at The Reserve at Sand Springs! This single-story home offers 1,412 square feet of open-concept living with 2 bedrooms, 2 baths, a full basement, and a 2-car garage, plus golf course views and a low-maintenance lifestyle. Lawn care, landscaping, snow removal, trash removal, and other exterior maintenance are all included in the monthly HOA fee. Just pas...
Read More at tuskeshomes.com

HOME FEATURES

- 2 Beds
- 2 Baths
- 2 Car Garage
- Low Maintenance Lifestyle
- Room Accent Lighting Package Including 4 LED Recessed Lights in Kitchen and Owners' Bedroom
- Owners' Suite with Large Walk-In Closet
- 40" Direct Vent Corner Fireplace with Slate Surround and Painted Mantel in Great Room
- Cathedral Ceiling in Main Living Area
- 14'x12' Trex Deck with Golf Course Views
- Full Basement with Egress Window

53 RESERVE DRIVE #39

Drums, PA 18222



AZALEA DORMER UNIT