

# 850 Champions Dr #GR-23A

Drums, PA 18222

## HOME DETAILS

 3 Beds  2.5 Baths  1,495 Sq Ft

 2 Story  1 Car Garage



Greens at Sand Springs Craftsman

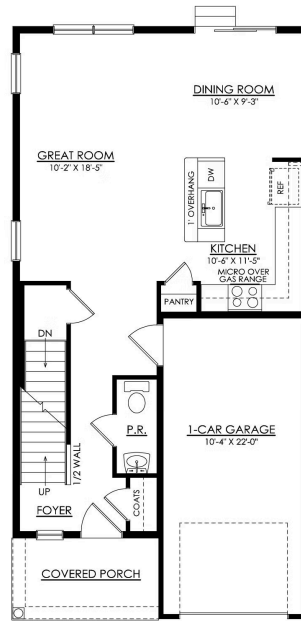
The Greens at Sand Springs are both elegant and spacious, with a floorplan that will make you feel right at home. Upon entering, you'll be welcomed by an open-concept first floor, featuring a Kitchen that has everything you need for cooking and entertaining complete with a large island for extra seating, ample counter space, a convenient pantry. The Great Room and Dining Room are seamless... Read More at [tuskeshomes.com](http://tuskeshomes.com)

## HOME FEATURES

- 3 Bedrooms
- 2.5 Bathrooms
- 1-Car Garage
- Spacious Owner's Suite with Private Bath and Walk-In Closet
- Open-Concept 1st Floor Living Space
- 8' Basement with Egress Window
- 10' x 12' Pressure Treated Wood Deck with Steps to Grade
- Curated Collection - Timeless Traditional
- Premium Plus Electrical Package
- Golf Course Views

# 850 CHAMPIONS DR #GR-23A

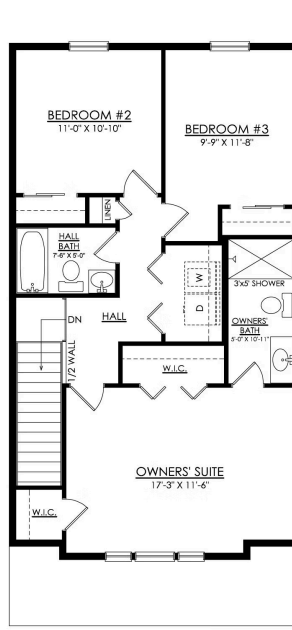
Drums, PA 18222



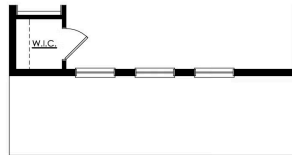
**GREENS AT SS- 1ST FLOOR  
COTTAGE & CRAFTSMAN**  
STARTING AT 1495 SF

# 850 CHAMPIONS DR #GR-23A

Drums, PA 18222



**GREENS AT SS- 2ND FLOOR  
COTTAGE**  
STARTING AT 1510 SF



**GREENS AT SS- 2ND FLOOR  
CRAFTSMAN**  
STARTING AT 1495 SF