

# Azalea Floor Plan

In Sand Springs from **\$349,900**

## PLAN DETAILS

Pricing from **\$349,900**

2 Beds 2.0 Baths 1,412 Sq Ft

1 Story 2 Car Garage



Azalea

Welcome to the Azalea, a beautiful Single-Story home designed for your comfort. Located at the Reserves at Sand Springs, you'll find not just amazing Golf Course Views, but also enjoy hassle-free living with lawn care, landscaping, snow removal, gutter cleaning, trash removal, and other exterior maintenance included in the monthly HOA fee. Just past the Foyer, you're welcomed by the gorgeous open-concept design. Spanning the Great Room, Kitchen, and Dining Area is a large Cathedral Ceiling, making the Single-Story home even more grand. The Kitchen includes an Island with extra room for seating, a Pantry, and select Stainless Steel appliances. The spacious Owner's Suite features both a Walk-In Closet as well as a Private Bath with a double vanity. With an additional Bedroom an ... Read More at [tuskeshomes.com](http://tuskeshomes.com)

## PLAN FEATURES

- 2 Bedrooms
- 2 Bathrooms
- 2-Car Garage
- Single-Story Living
- Owner's Suite with Private Bath and Large Walk-In Closet
- Spacious Open-Concept layout
- Cathedral Ceiling in Living Area
- Kitchen Island with Overhang for Additional Seating
- Pantry
- 14'x12 Trex Deck
- Golf Course Views
- Maintenance Free Living - Monthly HOA Fee includes Lawn Care, Landscaping, Snow Removal, Gutter Cleaning, Trash, and other Exterior Maintenance

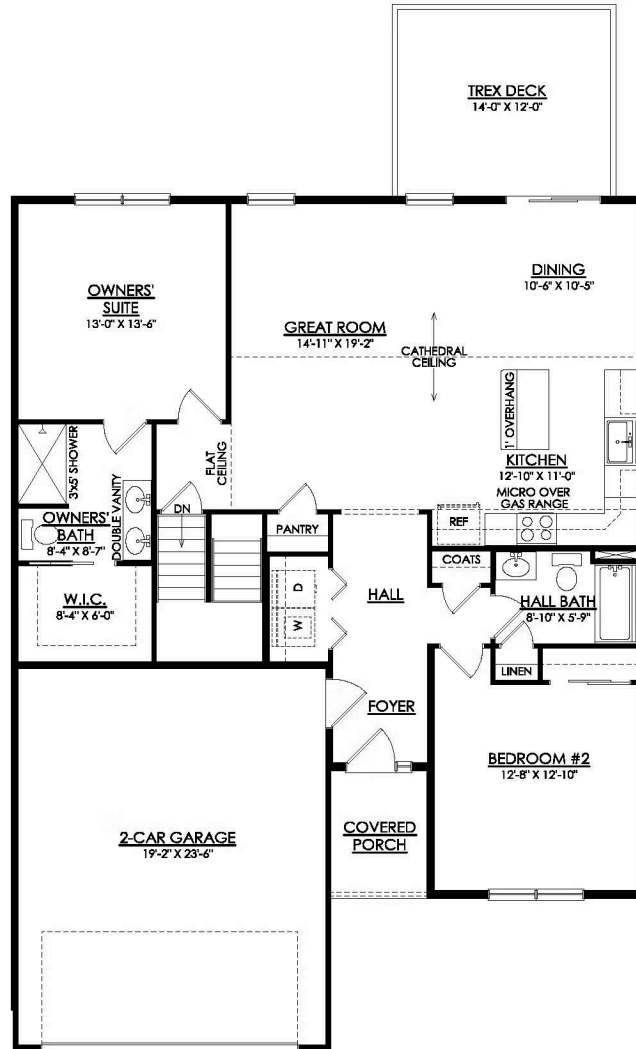
# Azalea Floor Plan

In Sand Springs from \$349,900



# Azalea Floor Plan

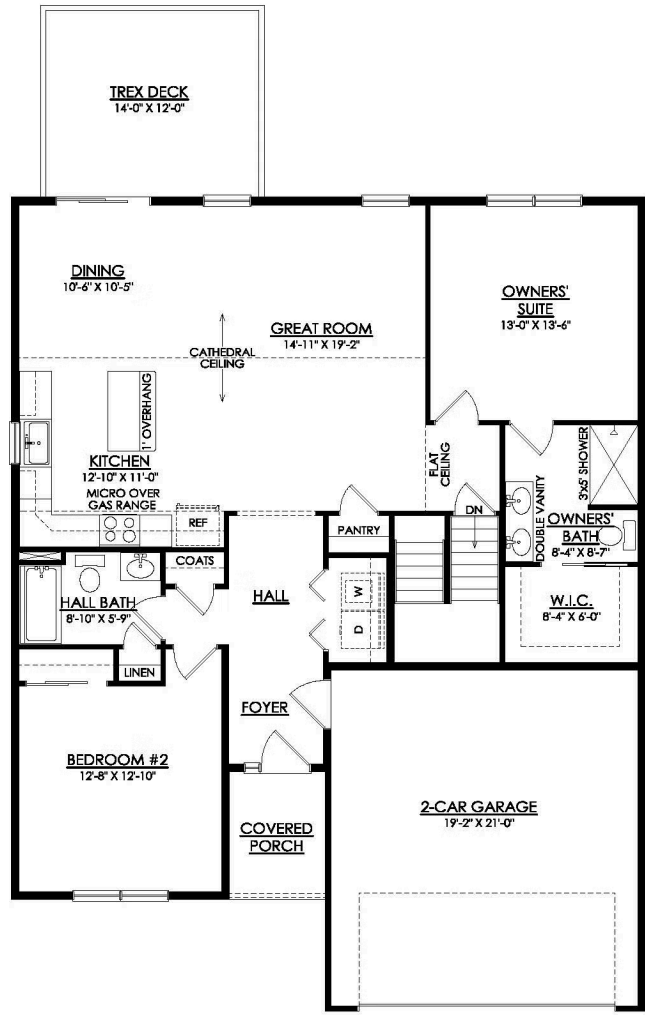
In Sand Springs from \$349,900



**AZALEA  
STANDARD UNIT**

# Azalea Floor Plan

In Sand Springs from \$349,900



## AZALEA DORMER UNIT