

# Breckenridge Floor Plan

In Sand Springs from **\$514,900**

## PLAN DETAILS

Pricing from **\$514,900**

4 Beds 2.5 Baths 2,948 Sq Ft

2 Story 2 Car Garage



Farmhouse Elevation

The Breckenridge is a luxurious single-family home with over 2,900 sq ft of living space, perfect for those who appreciate fine living and require extra room. Enjoy entertaining guests in the beautiful 2-story Great Room or cozy up in the nearby Living Room. The spacious Kitchen features ample counter space with versatile configurations. Host formal dinners in the elegant Dining Room or work from home in the private Study with a convenient nearby Powder Room. The lavish Owners' Suite is situated on the second floor, offering a Sitting Room and a private full Bathroom for maximum comfort. Additionally, three more generously sized Bedrooms share a hall bath, with a convenient second-floor Laundry Room nearby. With the optional Breckenridge Grande enhancement, enjoy an alternate second floor p ... Read More at [tuskeshomes.com](https://tuskeshomes.com)

# Breckenridge Floor Plan

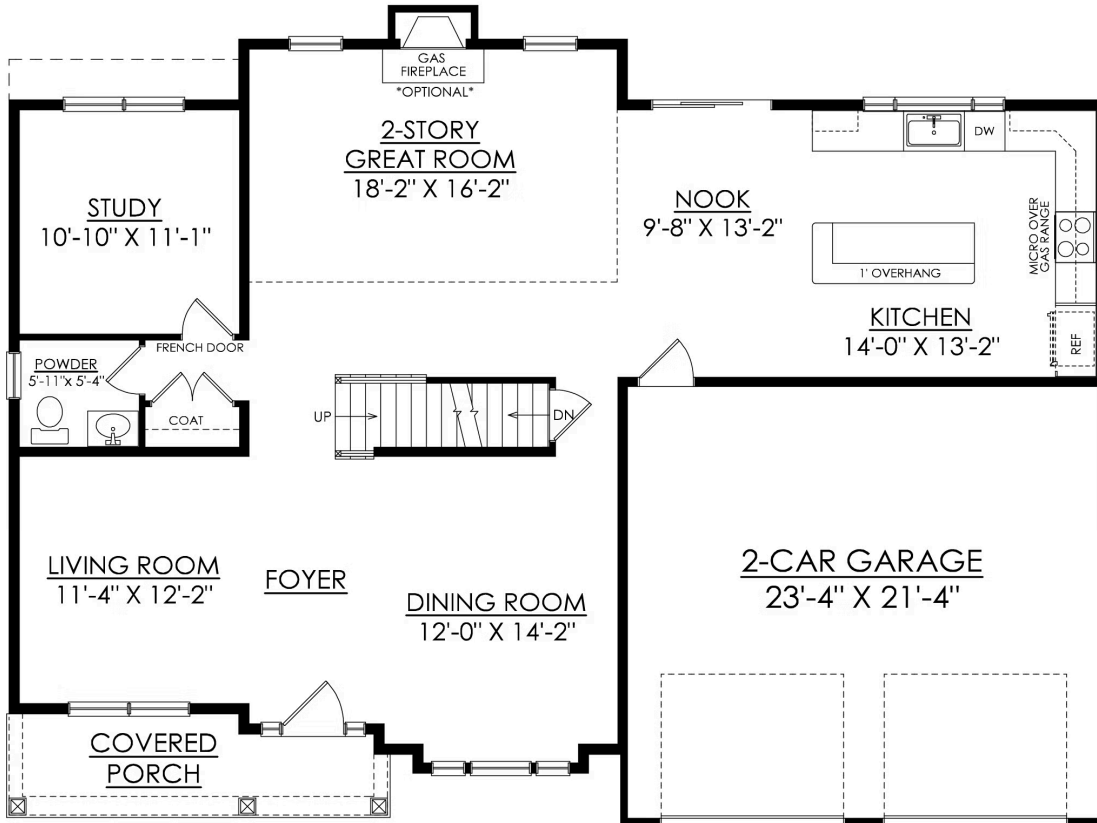
In Sand Springs from \$514,900



Traditional Elevation

# Breckenridge Floor Plan

In Sand Springs from \$514,900

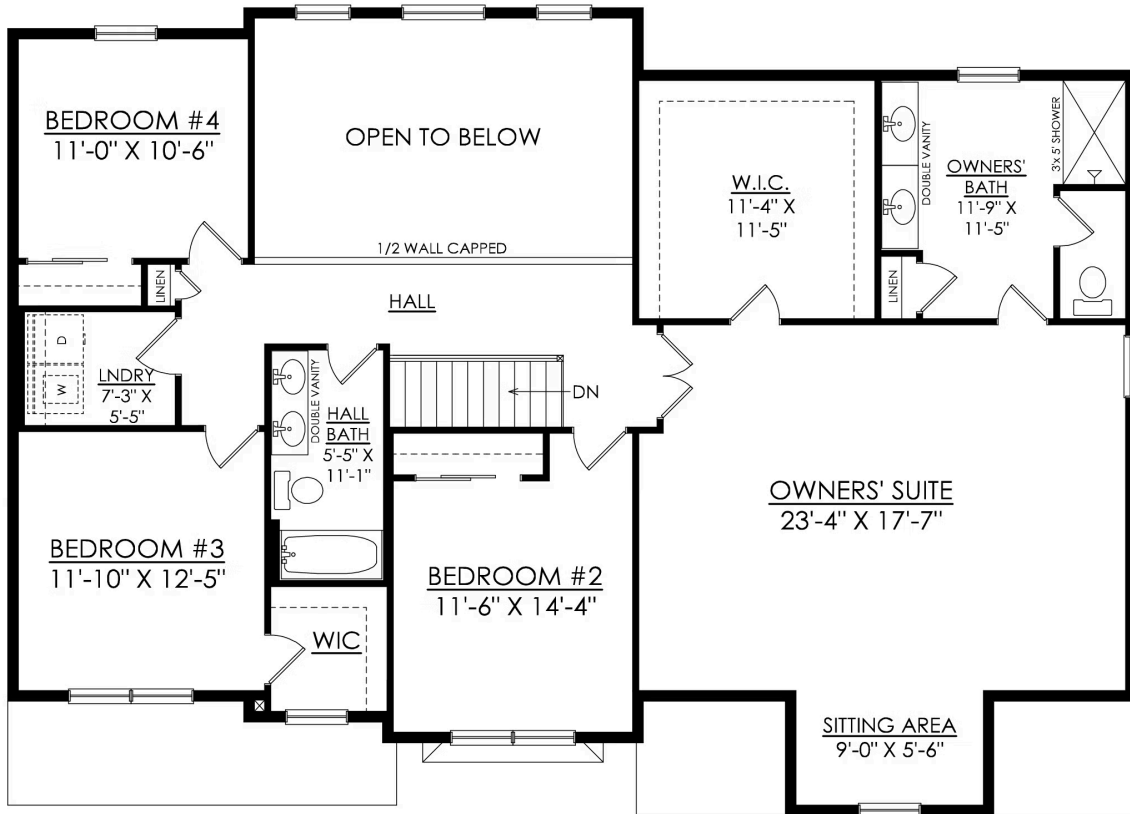


**BRECKENRIDGE TRADITIONAL**  
STARTING AT 2954 SF

**1ST FLOOR PLAN**

# Breckenridge Floor Plan

In Sand Springs from \$514,900



## BRECKENRIDGE TRADITIONAL STARTING AT 2954 SF

## 2ND FLOOR PLAN



# Breckenridge Floor Plan

In Sand Springs from **\$514,900**



# Breckenridge Floor Plan

In Sand Springs from **\$514,900**



# Breckenridge Floor Plan

In Sand Springs from **\$514,900**



# Breckenridge Floor Plan

In Sand Springs from **\$514,900**



# Breckenridge Floor Plan

In Sand Springs from **\$514,900**



# Breckenridge Floor Plan

In Sand Springs from **\$514,900**