

Morgan Floor Plan

In The Cove at Sand Springs

PLAN DETAILS

4 Beds 2.5 Baths 2,648 Sq Ft

2 Story 2 Car Garage



Traditional Elevation

Meet The Morgan Most days don't begin at the front door. The Morgan is designed around that. You come in from the garage into a Mudroom built to catch the day, shoes, coats, bags, the stuff that piles up, before it ever reaches the rest of the house. A step beyond, the home opens up. The Kitchen, Nook, and Great Room flow together as one bright space, with windows lining the Great Room wall and a gas fireplace anchoring the far end. The Kitchen is set up to work as hard as you do, with an island for prep and gathering, generous counter space, and a walk-in pantry tucked right off it. The rest of the first floor is ready to flex around you. A Study behind French Doors gives you a quiet place to work or focus, and the Dining/Flex space adapts to whatever you need it to be, a formal dining room ... Read More at tuskeshomes.com

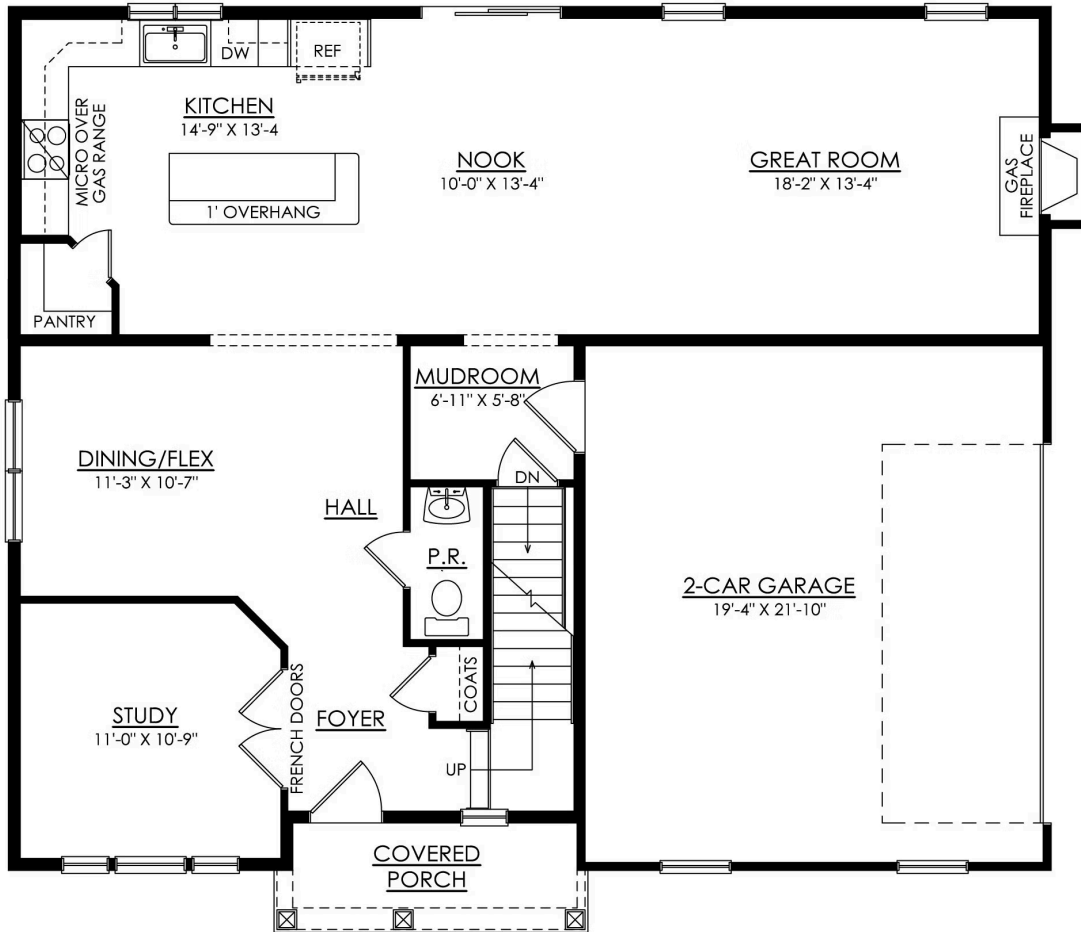
Morgan Floor Plan

In The Cove at Sand Springs



Morgan Floor Plan

In The Cove at Sand Springs



MORGAN TRADITIONAL 1ST FLOOR PLAN PREMIER

Morgan Floor Plan

In The Cove at Sand Springs



MORGAN TRADITIONAL 2ND FLOOR PLAN PREMIER



Morgan Floor Plan

In The Cove at Sand Springs



Morgan Floor Plan

In The Cove at Sand Springs