

Rockford Floor Plan

In The Cove at Sand Springs

PLAN DETAILS

3 Beds 2.0 Baths 2,162 Sq Ft

1 Story 2 Car Garage



Cottage Elevation

Meet The RockfordWalk into the Rockford and the ceiling is the first thing that gets you.The Great Room opens all the way up under a dramatic cathedral ceiling, and with a wall of windows behind it, the whole space feels open and airy from the moment you step in. It flows right into the Kitchen, where an island with an overhang, generous counter space, and a walk-in pantry keep everything within easy reach. And because the Rockford lives all on one level, that big central space is the heart of everyday life, not a room you climb stairs to reach.The Owners' Suite is tucked to the back of the home for privacy, a true retreat with two spacious Walk-In Closets and a private Bath featuring a double vanity and a walk-in shower. Two more Bedrooms sit on their own side of the home with a Hall Bath ...
Read More at tuskeshomes.com

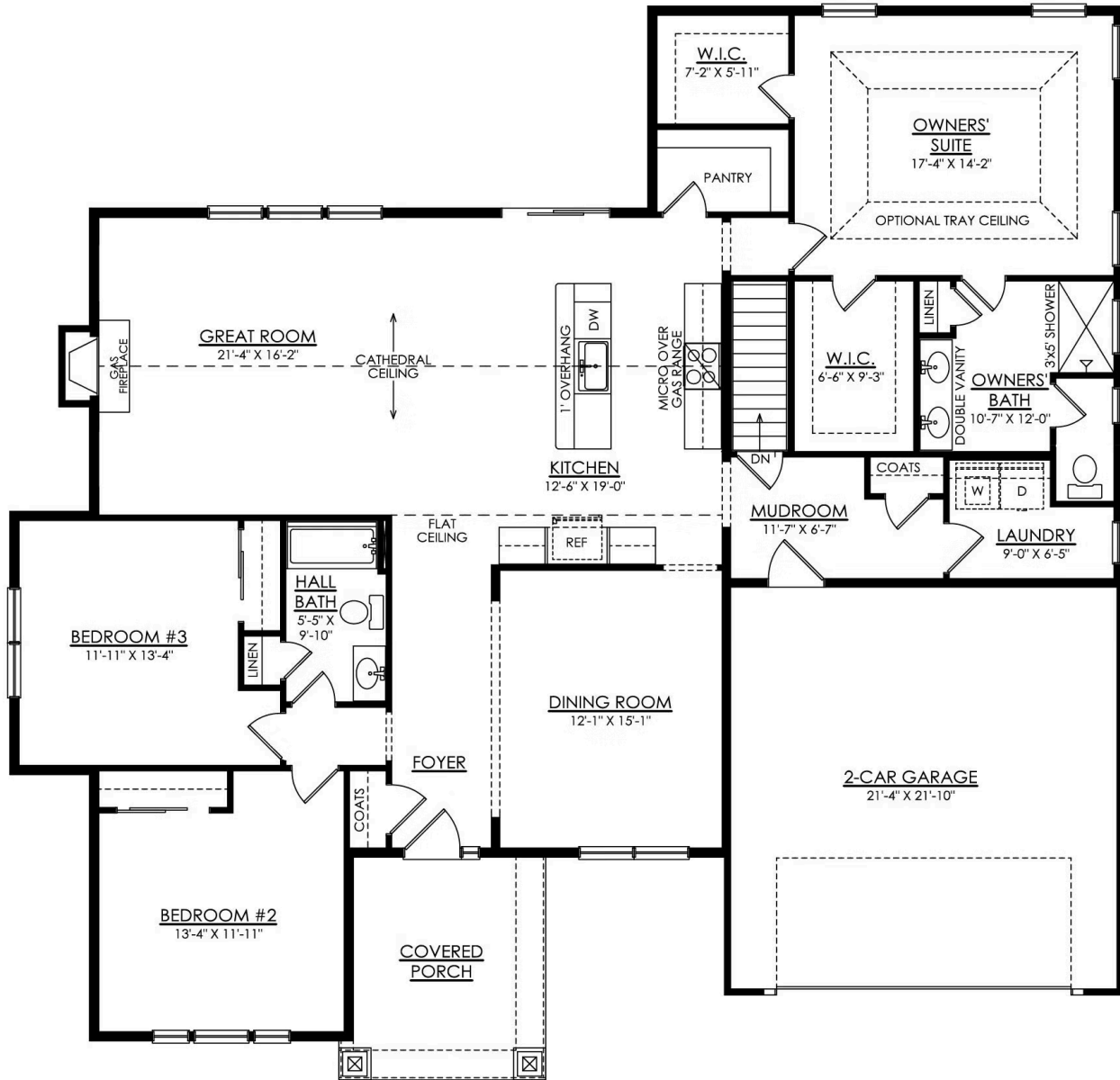
Rockford Floor Plan

In The Cove at Sand Springs



Rockford Floor Plan

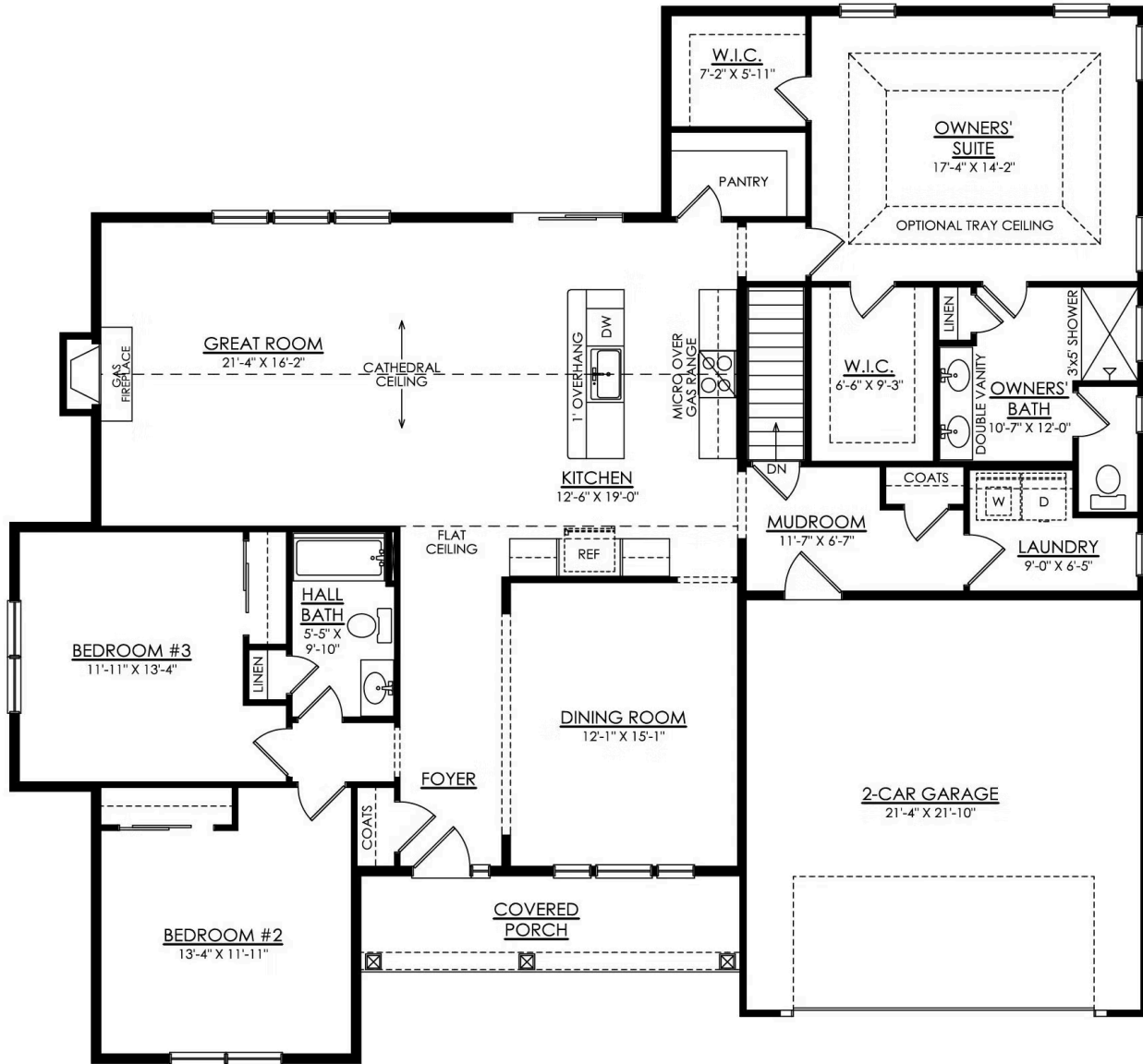
In The Cove at Sand Springs



ROCKFORD CRAFTSMAN 1ST FLOOR PLAN PREMIER

Rockford Floor Plan

In The Cove at Sand Springs



ROCKFORD COTTAGE 1ST FLOOR PLAN PREMIER