

Sienna Floor Plan

In The Cove at Sand Springs

PLAN DETAILS

4 Beds 2.5 Baths 2,828 Sq Ft

2 Story 2 Car Garage



Farmhouse Elevation

Meet The SiennaThe Sienna puts the Owners' Suite where you might not expect it: right on the first floor.It's a main-level retreat all its own, with a private Bath, dual vanity, walk-in shower, and a spacious Walk-In Closet, tucked into its own corner of the home away from the busy central spaces. Having it on the first floor keeps everyday living easy and gives the suite a real sense of separation and quiet. And when the layout needs to flex, the same plan offers an optional first-floor In-Law Suite configuration that moves the Owners' Suite upstairs, giving you a private main-level space that adapts to whatever the years ask of it.The rest of the home lives just as well. The two-story Great Room opens overhead with a gas fireplace anchoring it, an easy place to relax or host. It flows in ... Read More at tuskeshomes.com

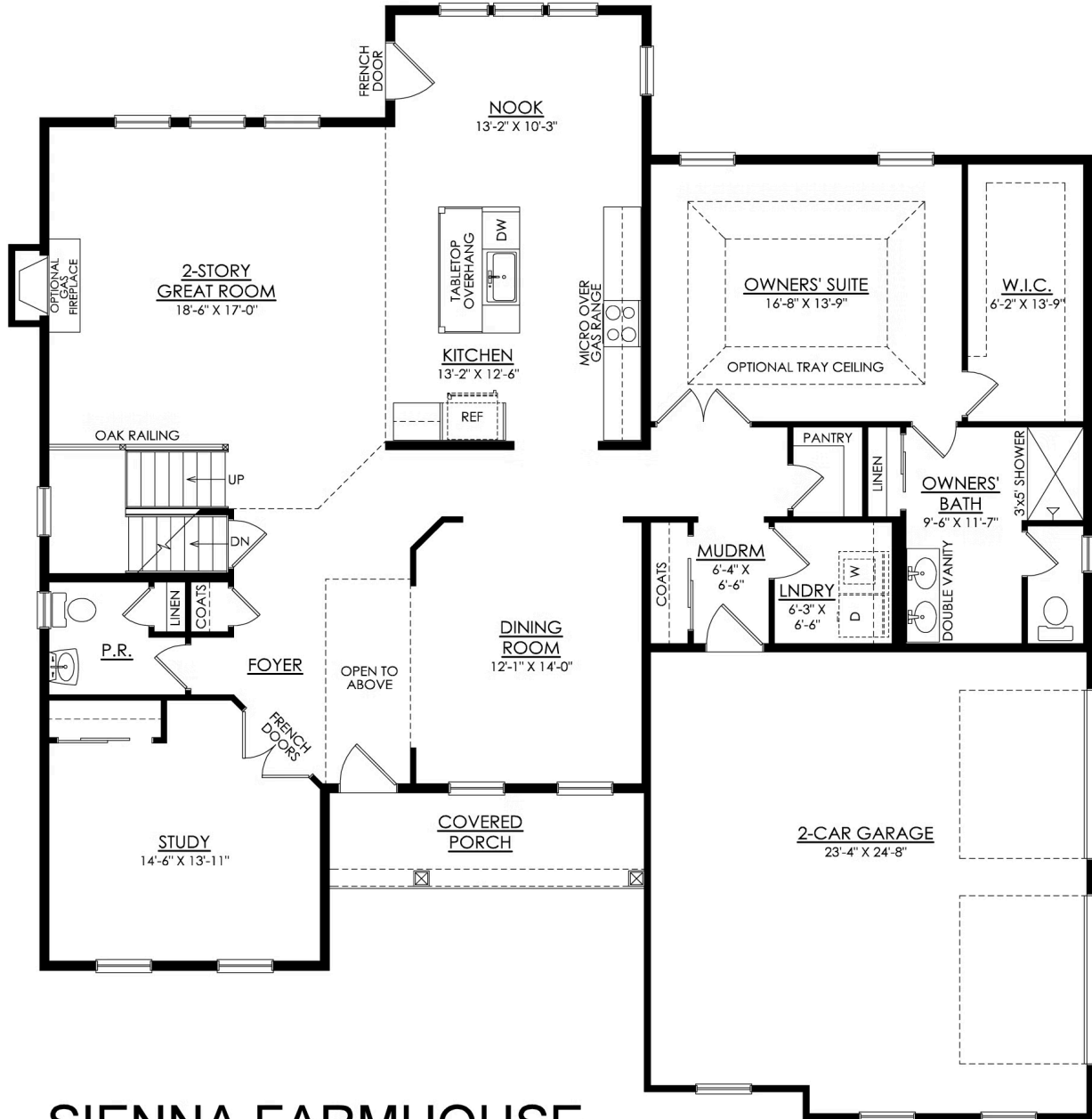
Sienna Floor Plan

In The Cove at Sand Springs



Sienna Floor Plan

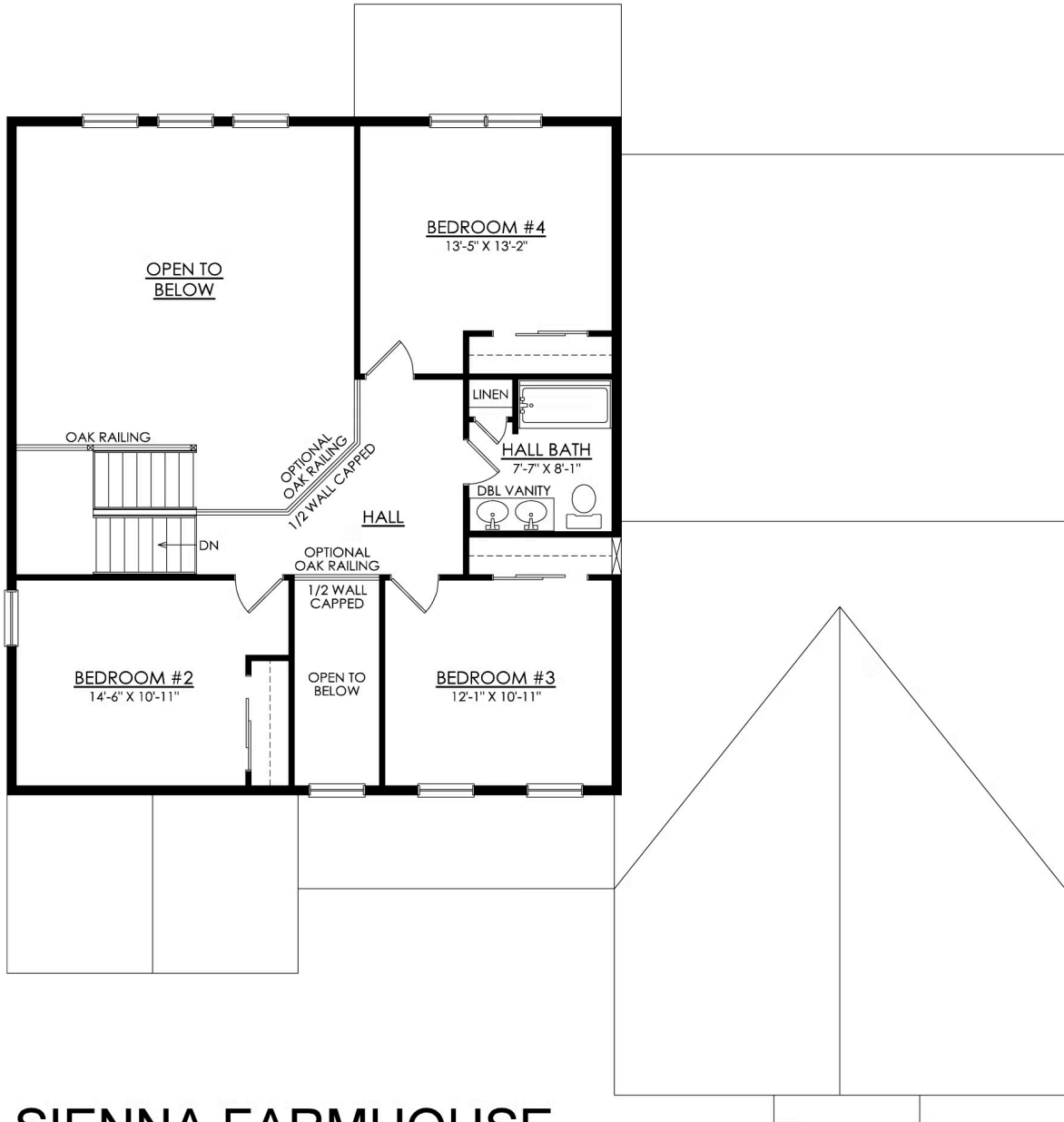
In The Cove at Sand Springs



SIENNA FARMHOUSE 1ST FLOOR PLAN PREMIER

Sienna Floor Plan

In The Cove at Sand Springs



SIENNA FARMHOUSE 2ND FLOOR PLAN PREMIER



Sienna Floor Plan

In The Cove at Sand Springs



Sienna Floor Plan

In The Cove at Sand Springs