

St. Andrews Floor Plan

In The Cove at Sand Springs

PLAN DETAILS

- 3 Beds 2.0 Baths 1,776 Sq Ft
- 1 Story 2 Car Garage



Traditional Elevation

Meet The St. AndrewsThe St. Andrews gives everyone their own corner, all on a single level.The Owners' Suite sits off on its own side of the home, a private retreat with a spacious Walk-In Closet and a Bath featuring a double-bowl vanity and a walk-in shower. Clear on the other side, two more Bedrooms share a Hall Bath, with real separation in between, so the primary suite stays quiet and tucked away from the rest. One of those rooms is set up as a Bedroom or Study, ready to shift between the two as your needs change.In the middle, the home opens up. The Great Room, Kitchen, and Nook flow together into one bright space, with an optional gas fireplace in the Great Room for the evenings you want to settle in. The Kitchen keeps things easy with an island and overhang for casual seating, a wal ... Read More at tuskeshomes.com

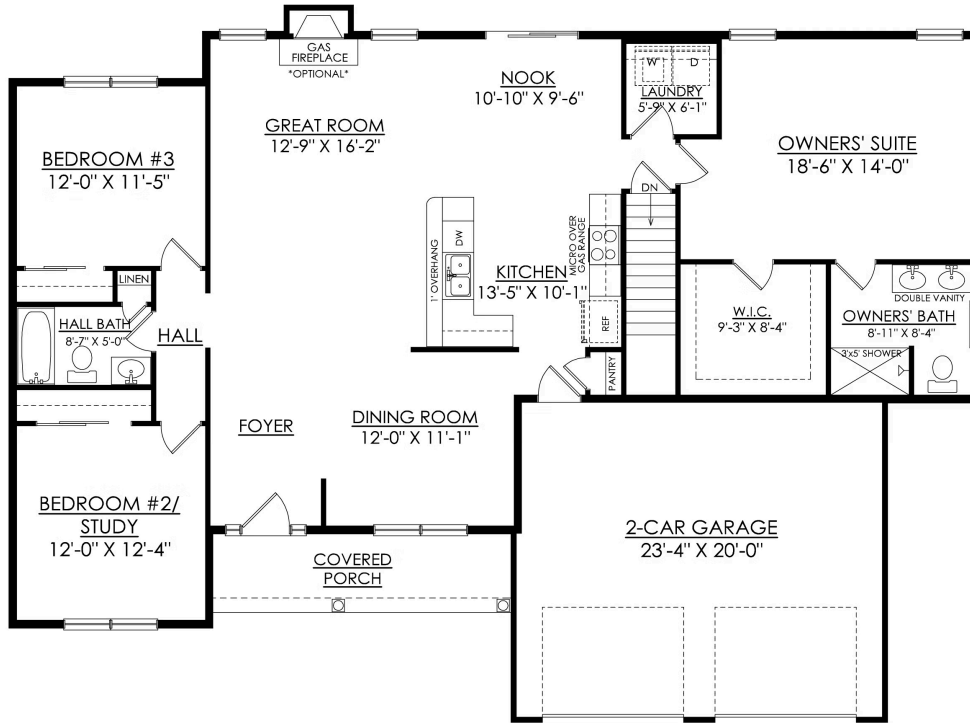
St. Andrews Floor Plan

In The Cove at Sand Springs



St. Andrews Floor Plan

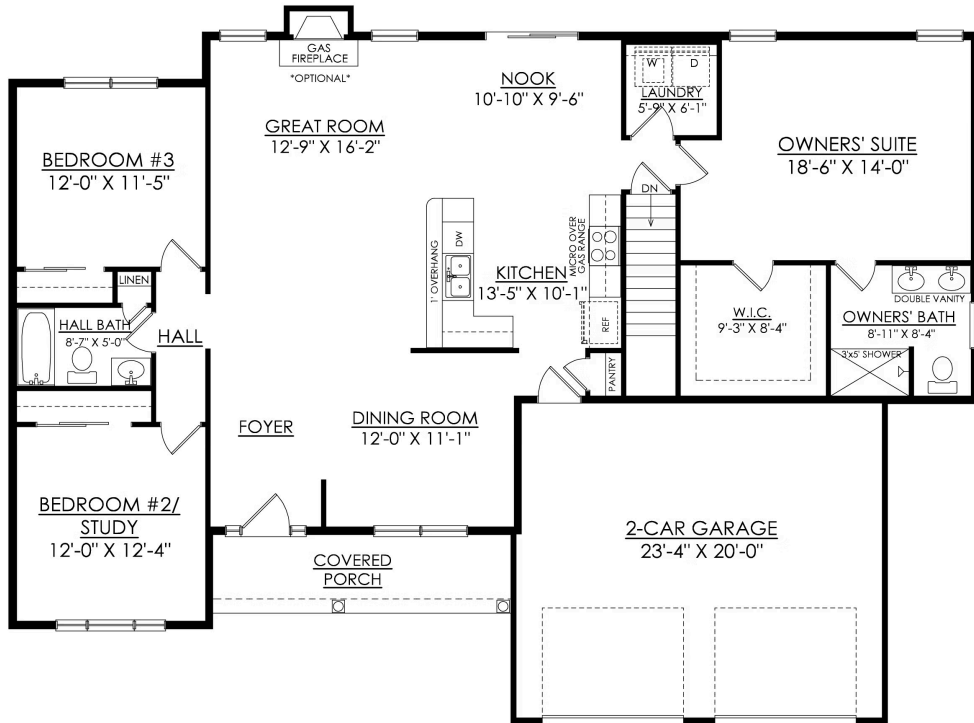
In The Cove at Sand Springs



ST ANDREWS TRADITIONAL
STARTING AT 1776 SF

St. Andrews Floor Plan

In The Cove at Sand Springs



ST ANDREWS COUNTRY
STARTING AT 1776 SF