

# Willow Floor Plan

In The Cove at Sand Springs

## PLAN DETAILS

4 Beds 2.5 Baths 2,424 Sq Ft

2 Car Garage



Craftsman Elevation

Meet The WillowSome homes are built for a moment. The Willow is built for whatever comes next.It starts the way the best days do, with everyone drifting toward the same room. The Great Room and Kitchen open into one another, so the person stirring something on the stove is still part of the conversation happening by the gas fireplace. Pull a stool up to the island for a slow breakfast or spread out at the Dining Room table when the whole family is in town. There's a walk-in pantry keeping the chaos out of sight, and a Study behind a French Door for the days that call for a little quiet, whether that's a home office, a reading nook, or a playroom with the door closed on the mess.Upstairs is where the Willow really looks after you. The Laundry room is right where the bedrooms are, so no more ... Read More at [tuskeshomes.com](http://tuskeshomes.com)

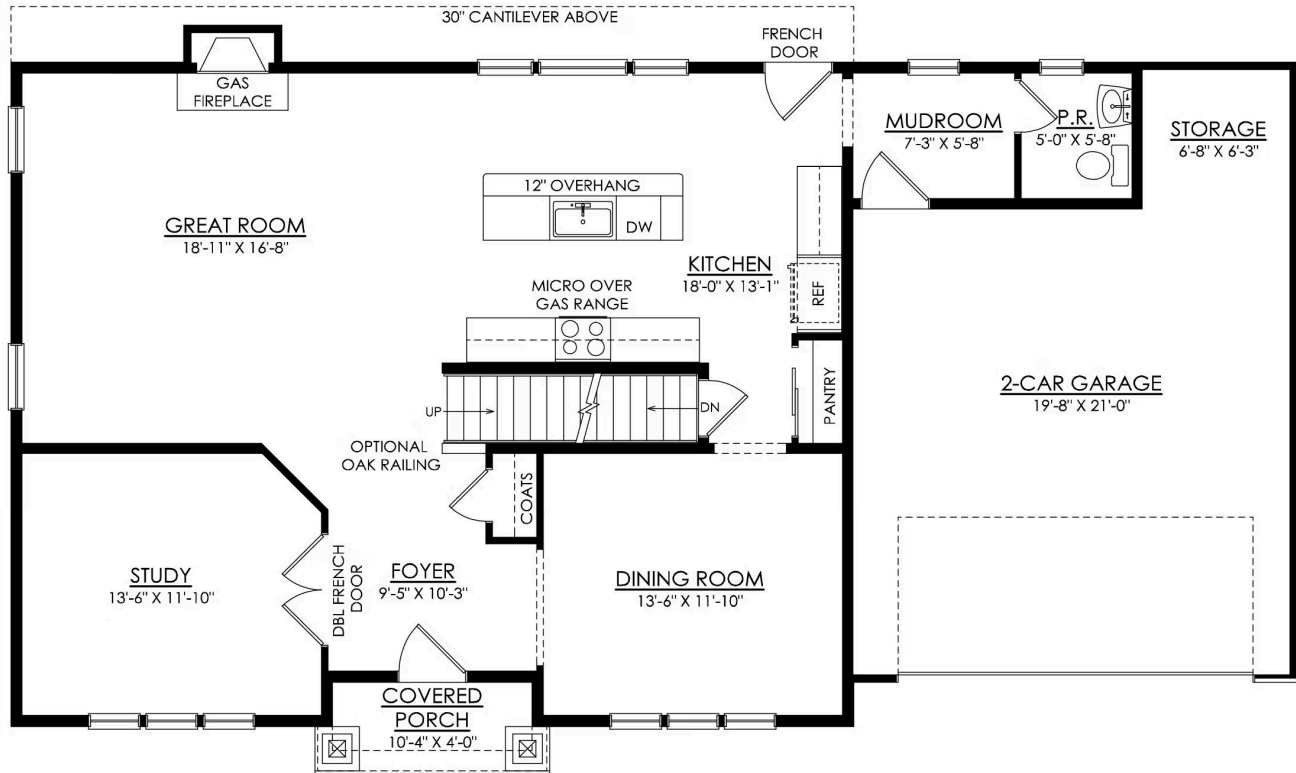
# Willow Floor Plan

In The Cove at Sand Springs



# Willow Floor Plan

In The Cove at Sand Springs



## WILLOW CRAFTSMAN 1ST FLOOR PLAN PREMIER

# Willow Floor Plan

In The Cove at Sand Springs



## WILLOW CRAFTSMAN 2ND FLOOR PLAN PREMIER



# Willow Floor Plan

In The Cove at Sand Springs



# Willow Floor Plan

In The Cove at Sand Springs



# Willow Floor Plan

In The Cove at Sand Springs



# Willow Floor Plan

In The Cove at Sand Springs



# Willow Floor Plan

In The Cove at Sand Springs