

Cordelia Floor Plan

In Riverview Estates Active Adult from **\$574,900**

PLAN DETAILS

Pricing from **\$574,900**

3 Beds 2.5 Baths 2,370 Sq Ft

2 Story 2 Car Garage

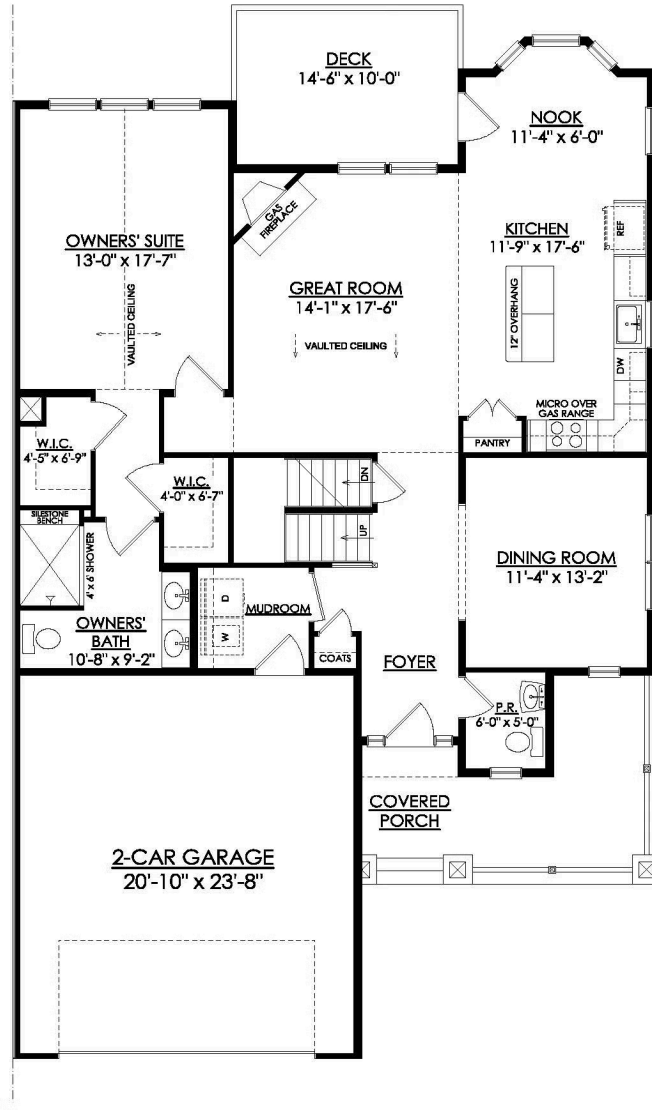


Cordelia - Left Garage

Discover the Cordelia, a 55+ Active Adult home design designed with your comfort in mind. Enter through the covered front porch into the cozy Foyer and enjoy the convenience of the first-floor Mudroom, Laundry Room, and Powder Room. The Great Room with vaulted ceilings, a wall of windows, and a gas fireplace is perfect for relaxing or entertaining. The kitchen, overlooking the Great Room, features a large island with room for seating and a Nook with a beautiful bay window that leads to your Trex deck. A formal Dining Room can also be found in the main living area, perfect for entertaining. Continue to the first-floor Owner's Suite retreat, offering two walk-in closets and a private Owner's Bath with two vanities and a fully tiled 4' x 6' shower. The second floor includes two additional Bedr ...
[Read More at tuskeshomes.com](http://tuskeshomes.com)

Cordelia Floor Plan

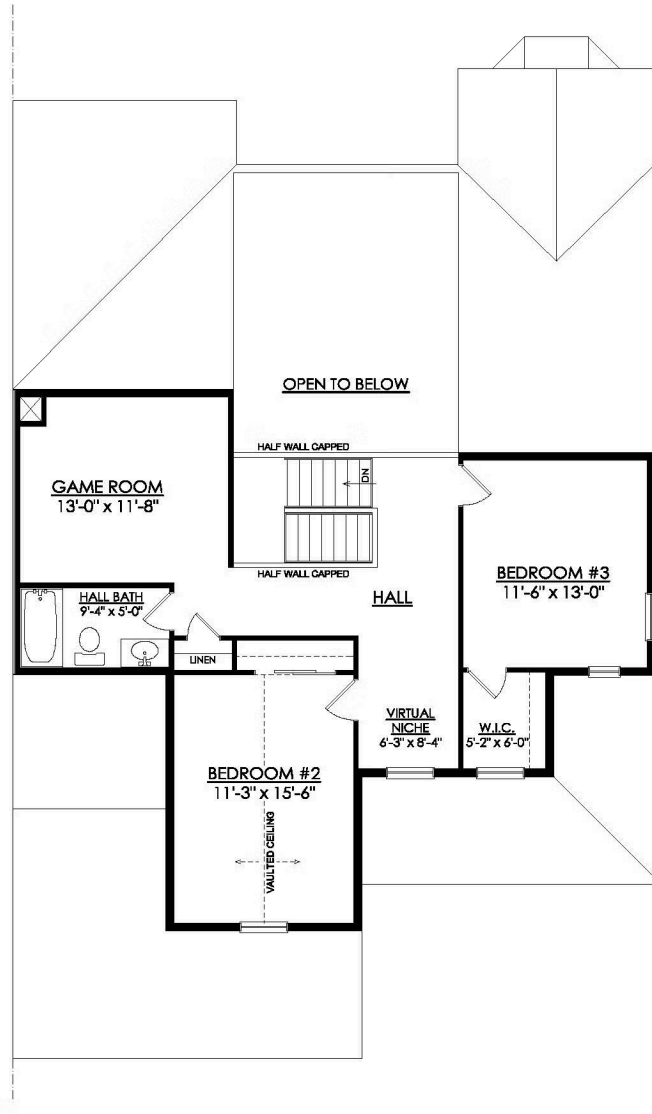
In Riverview Estates Active Adult from \$574,900



CORDELIA
STARTING AT 2370 SF
1ST FLOOR PLAN

Cordelia Floor Plan

In Riverview Estates Active Adult from \$574,900



CORDELIA STARTING AT 2370 SF 2ND FLOOR PLAN