






1016 Fairway Drive #43

Easton, PA 18040

HOME DETAILS

 4 Beds  3.5 Baths  3,131 Sq Ft
 2 Story  3 Car Garage



Traditional Elevation

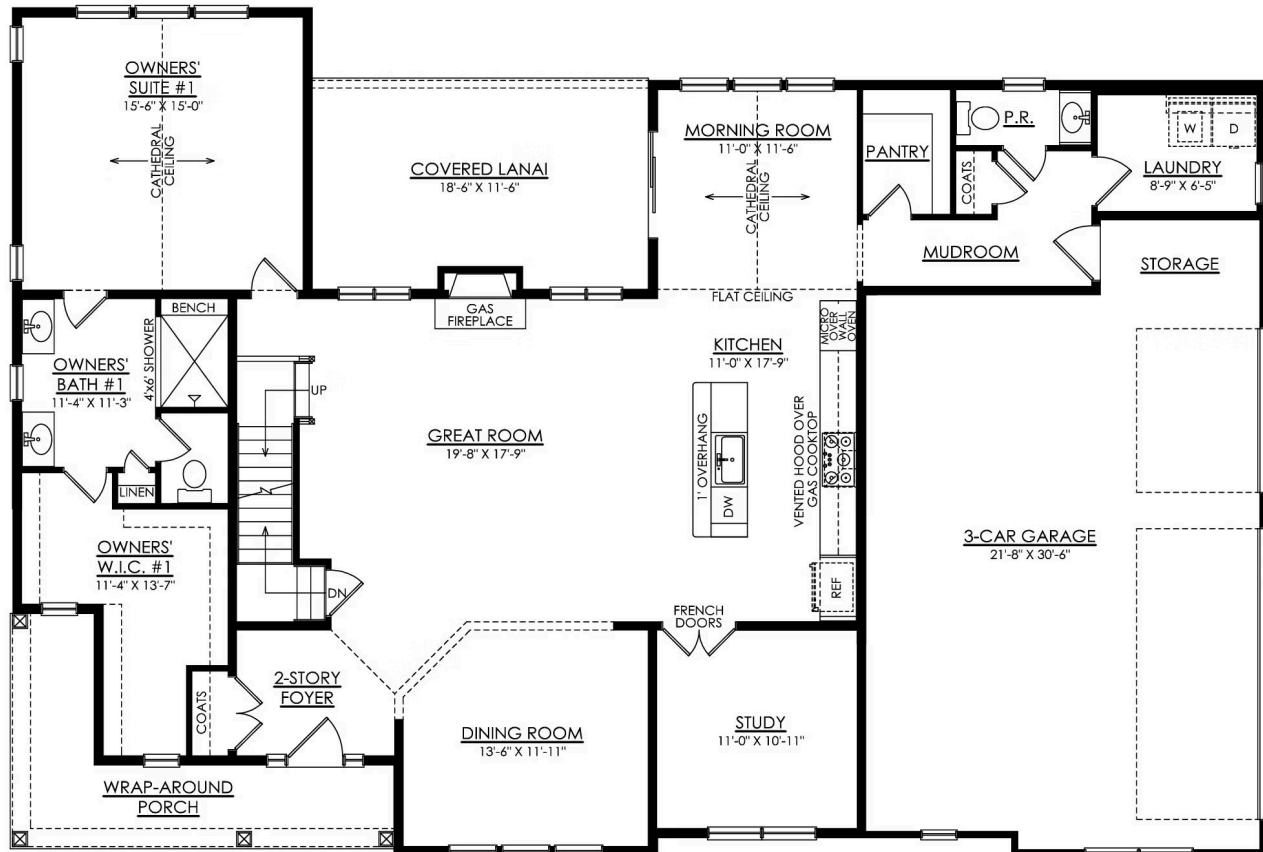
Additional Details About this Quick Delivery Home Coming Soon! Enjoy the comfort and convenience of The Aspen, a single-family home with 4 bedrooms, 3.5 bathrooms, and over 3,000 square feet of living space. A charming Wrap-Around Porch welcomes you home and offers the perfect spot to relax outdoors. Inside, past the 2-Story Foyer, the open-concept layout seamlessly connects the Great Room... Read More at tuskeshomes.com

HOME FEATURES

- 4 Bedrooms
- 3.5 Bathrooms
- 3-Car Garage
- 9' Full Basement
- Cosmo Fireplace with Stone to Ceiling
- 1st Floor Owners' Suite with Cathedral Ceiling
- Additional 2nd Floor Owners' Suite with Tray Ceiling
- 1st Floor Laundry Room with Laundry Tub
- Wood-Trimmed Windows on 1st Floor
- 18'x11' Covered Lanai
- Enhanced Lighting Package Throughout Home, including Additional LED Recessed Lights

1016 FAIRWAY DRIVE #43

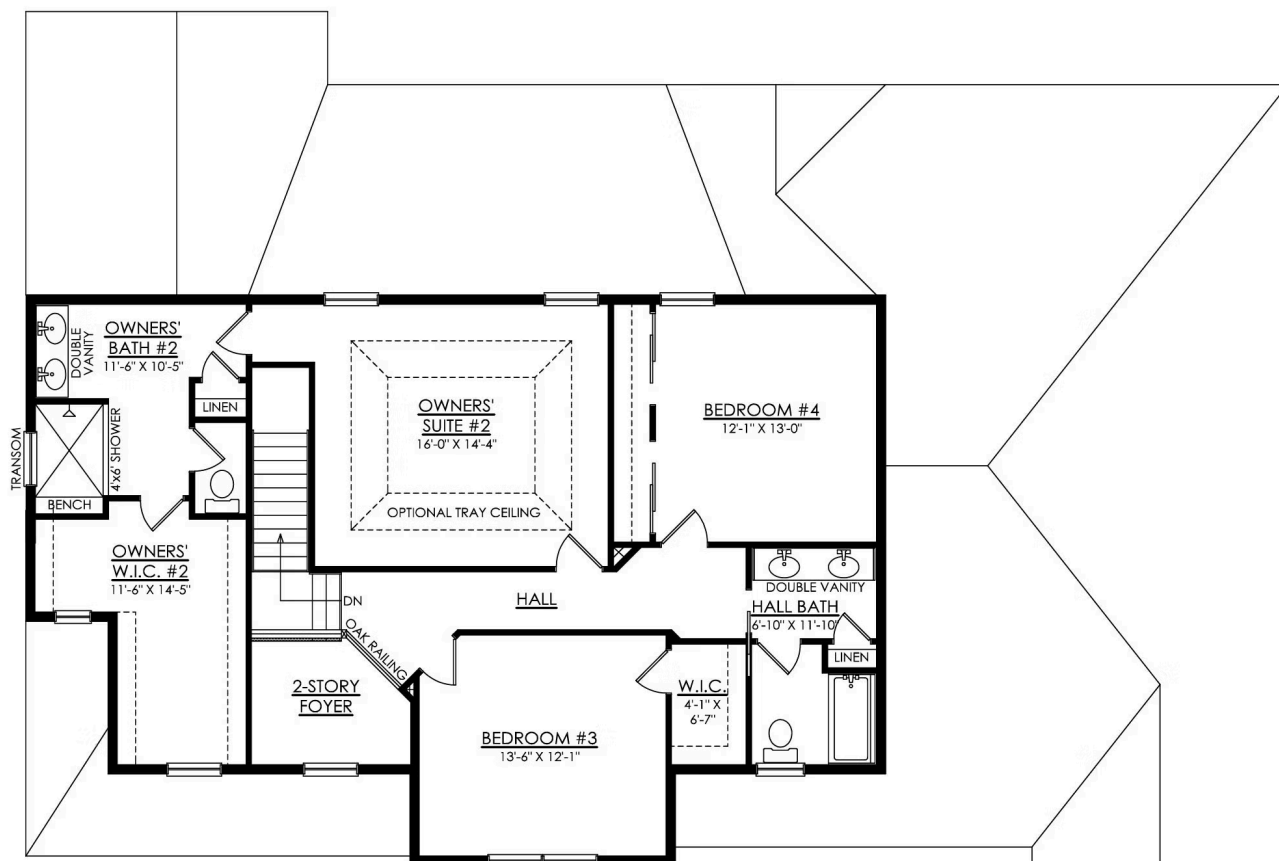
Easton, PA 18040



ASPEN TRADITIONAL 1ST FLOOR PLAN ESTATE

1016 FAIRWAY DRIVE #43

Easton, PA 18040



ASPEN TRADITIONAL 2ND FLOOR PLAN ESTATE