

Aspen Floor Plan

In Riverview Estates from **\$934,900**

PLAN DETAILS

Pricing from **\$934,900**

4 Beds 3.5 Baths 3,131 Sq Ft

2 Story 3 Car Garage



Traditional Elevation

Enjoy the comfort and convenience of The Aspen, a single-family home with 4 bedrooms, 3.5 bathrooms, and over 3,000 square feet of living space. A charming Wrap-Around Porch welcomes you home and offers the perfect spot to relax outdoors. Inside, past the 2-Story Foyer, the open-concept layout seamlessly connects the Great Room, Kitchen, and Dining Room, with a private Study for added versatility. Off the Morning Room, the Covered Lanai expands your living space outdoors, creating a year-round gathering area for friends and family. With a Mudroom first-floor Laundry Room, and a 3-Car Garage with extra storage, everything is conveniently accessible. The Aspen features the rare convenience of Owners' Suites on both the first and second floors. The first-floor suite is tucked away for privacy a ... Read More at tuskeshomes.com

PLAN FEATURES

4 Bedrooms

3.5 Bathrooms

3-Car Garage

Starting at 3,131 Square Feet

Chef's Kitchen with Stainless Steel Chimney

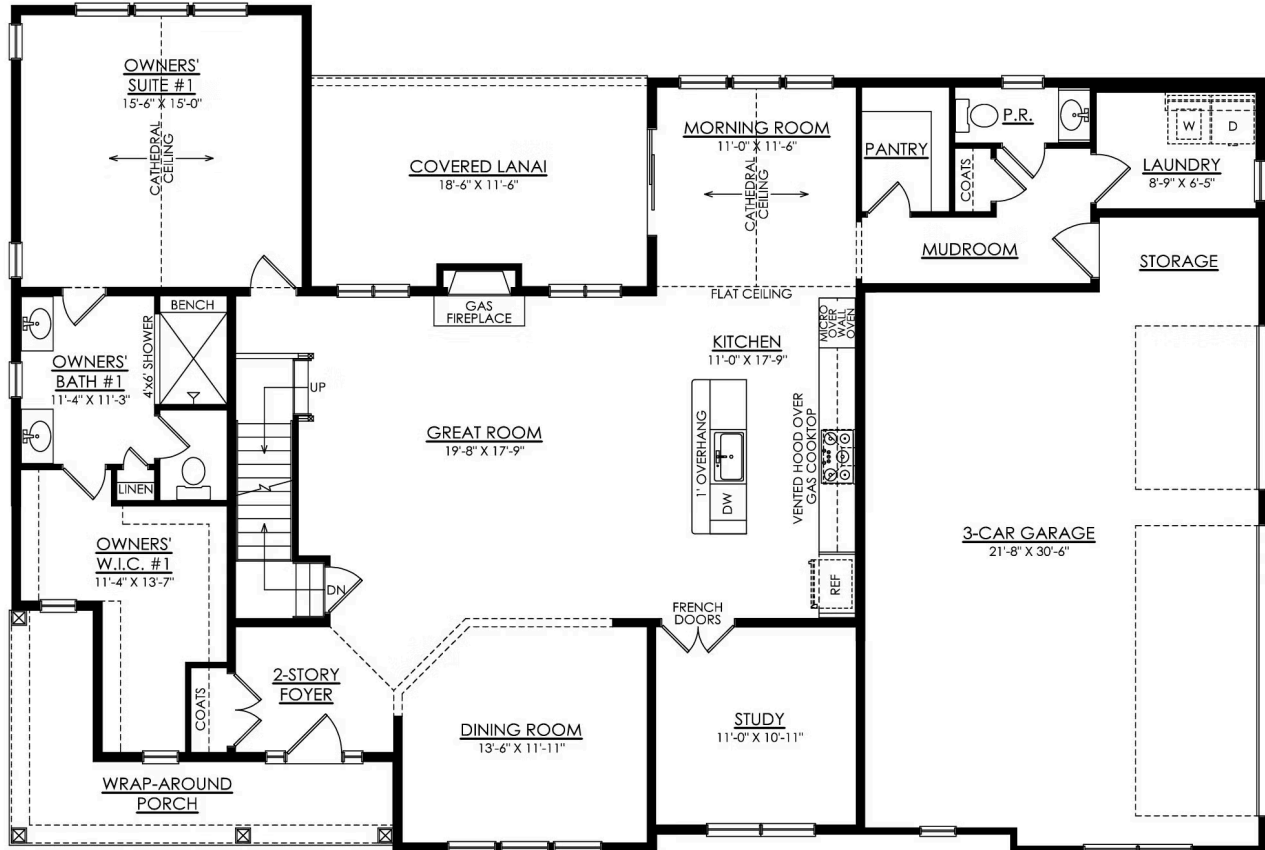
Hood, Wall Oven, 5-Burner Gas Cooktop, and

42" Wellborn Cabinetry

Kitchen Island with Quartz or Granite

Aspen Floor Plan

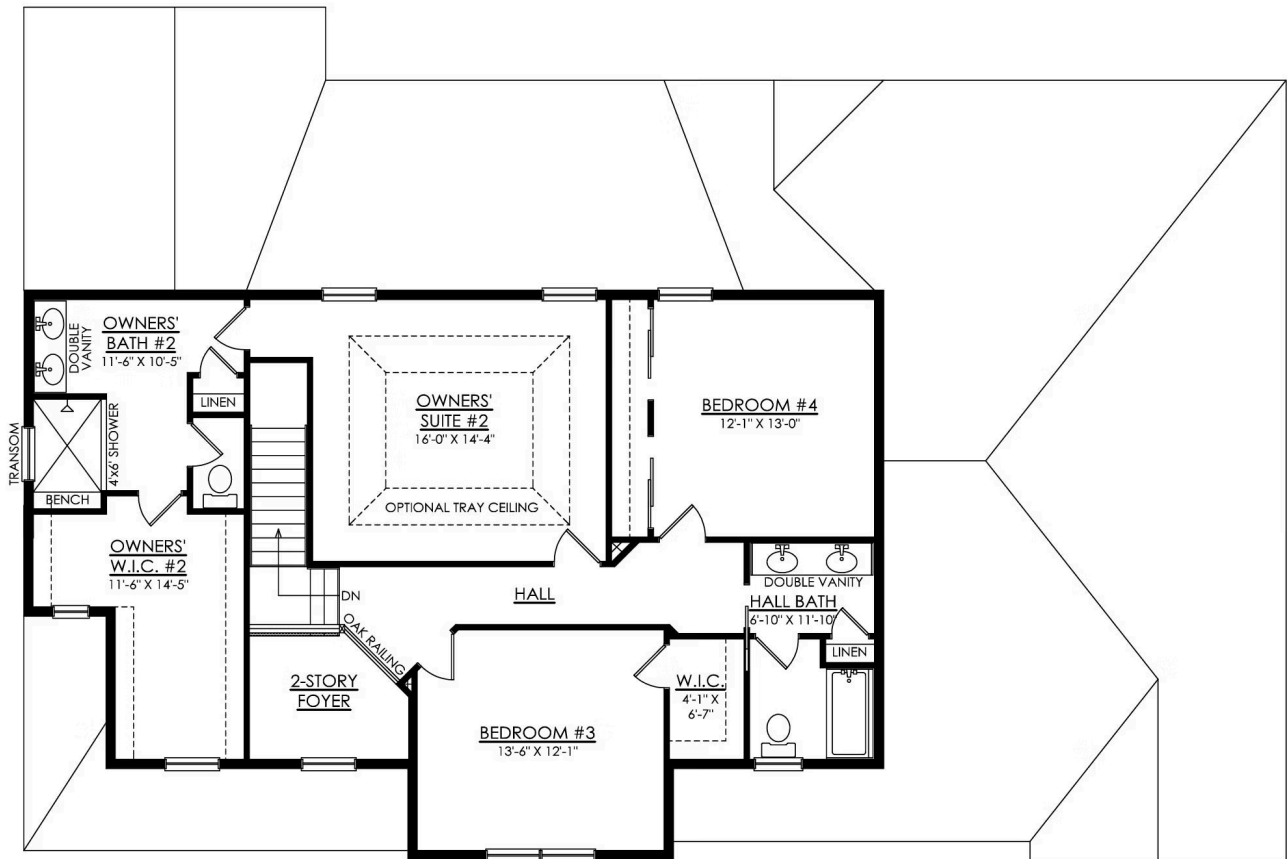
In Riverview Estates from \$934,900



ASPEN TRADITIONAL 1ST FLOOR PLAN ESTATE

Aspen Floor Plan

In Riverview Estates from \$934,900



ASPEN TRADITIONAL 2ND FLOOR PLAN ESTATE