

Juniper Floor Plan

In Riverview Estates from \$746,900

PLAN DETAILS

Pricing from \$746,900

4 Beds
 3.5 Baths
 3,307 Sq Ft
 2 Story
 2 Car Garage



Farmhouse Elevation - Side Entry Garage

Elevate your lifestyle with the Juniper, offering the perfect balance of privacy and comfort for you and your family. An impressive two-story Foyer sets the tone for this home's spacious open-concept main living area. The Kitchen is a cook's dream, with an expanded island, a walk-in pantry, and a butler's pantry for serving drinks or snacks. The airy 2-story Great Room boasts a gas fireplace and plenty of windows for natural light. A private Study and Powder Room complete the 1st floor layout. Head up the open staircase to find an enormous Owner's Suite with sitting area, a walk-in closets, and private Owner's Bath. Additionally, a Guest Suite with its own Bath, two additional Bedrooms that share a Jack-n-Jill bath, and a convenient 2nd floor laundry room can also be found on the 2nd ... Read More at tuskeshomes.com

PLAN FEATURES

4 Bedrooms
 3.5 Bathrooms
 2-Car Garage
 Starting at 3307 Square Feet
 Kitchen with Granite or Quartz Countertops
 Stainless Steel Range/Oven, Microwave, and Dishwasher
 Butler's Pantry
 Walk-In Pantry
 Two-Story Great Room
 Two-Story Foyer

Juniper Floor Plan

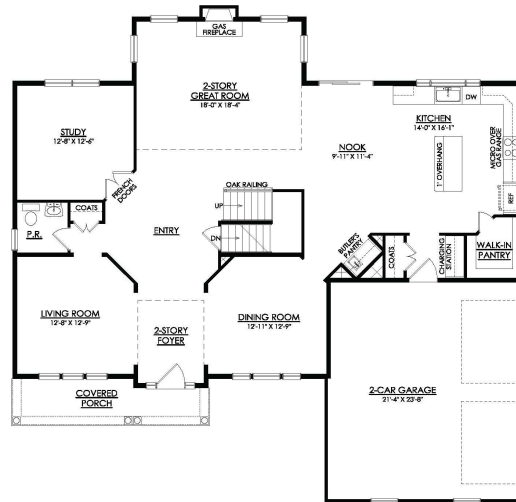
In Riverview Estates from \$746,900



Traditional Elevation - Side Entry Garage

Juniper Floor Plan

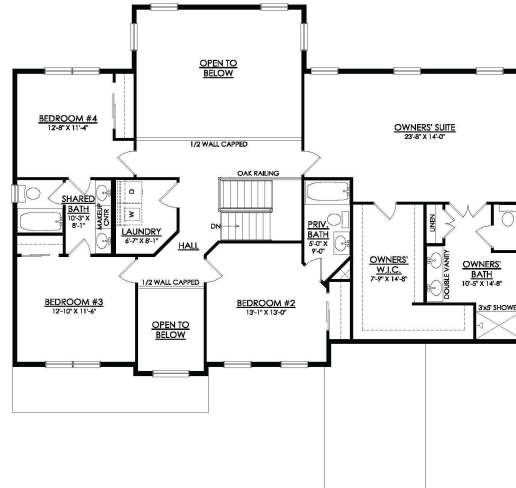
In Riverview Estates from \$746,900



JUNIPER FARMHOUSE
1ST FLOOR PLAN

Juniper Floor Plan

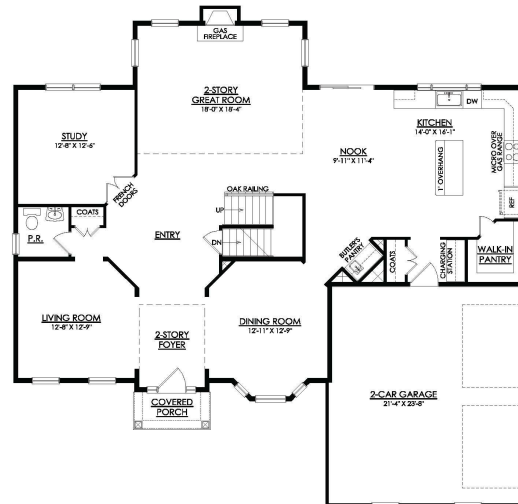
In Riverview Estates from \$746,900



JUNIPER FARMHOUSE
2ND FLOOR PLAN

Juniper Floor Plan

In Riverview Estates from \$746,900



JUNIPER TRADITIONAL
1ST FLOOR PLAN

Juniper Floor Plan

In Riverview Estates from \$746,900



JUNIPER TRADITIONAL
2ND FLOOR PLAN