






4714 Farrcroft Drive #110

Easton, PA 18040

HOME DETAILS

 4 Beds
  2.5 Baths
  2,443 Sq Ft
 2 Story
  2 Car Garage



Vinecrest Cottage - Side-Entry Garage

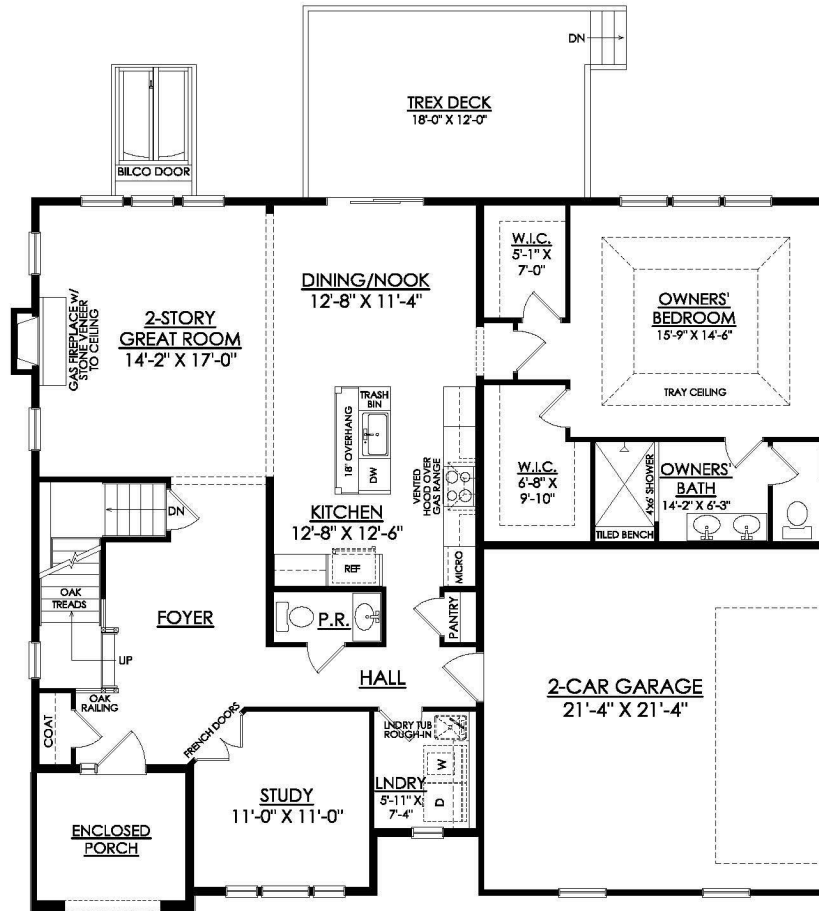
The Vinecrest floor plan features an open-concept layout, ideal for entertaining family and friends. The Kitchen includes an island with an overhang and a convenient walk-in pantry for your organizational needs. Connected to the kitchen is the Dining Room, as well as the spacious Great Room, which features a gas fireplace for cozy nights at home. The entire first floor is flooded with na... Read More at tuskeshomes.com

HOME FEATURES

- 3 Bedrooms
- 2.5 Bathrooms
- 2-Car Garage
- 9' Full Basement
- 12' x 18' Trex Deck with Steps to Grade
- 2-Story Great Room including Fireplace Surround with Bluestone Hearth to Ceiling
- 1st Floor Owner's Suite with Tray Ceiling
- 2nd Floor Loft
- Bilco Door
- Local Trail Access and Close to Popular Recreational Parks and Community Center
- Public Natural Gas, Public Water, and Public Sewer

4714 FARRCROFT DRIVE #110

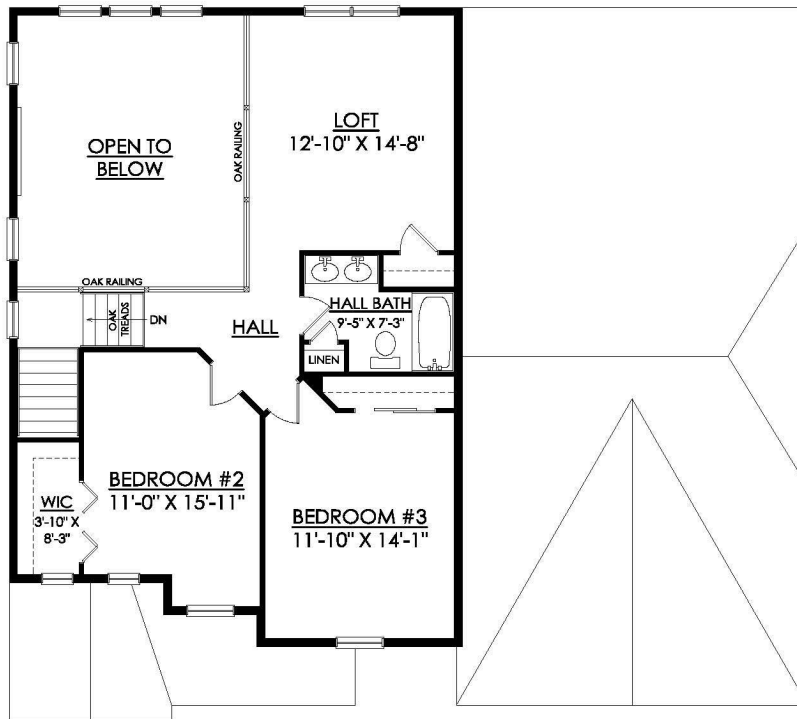
Easton, PA 18040



VINECREST COTTAGE
1ST FLOOR PLAN
ESTATES AT STEEPLECHASE NORTH- SC110

4714 FARRCROFT DRIVE #110

Easton, PA 18040



VINECREST COTTAGE
2ND FLOOR PLAN
ESTATES AT STEEPLECHASE NORTH- SC110