

4929 Farrcroft Drive #83B

Easton, PA 18040

HOME DETAILS

4 Beds 3.5 Baths 2,797 Sq Ft

3 Story 2 Car Garage



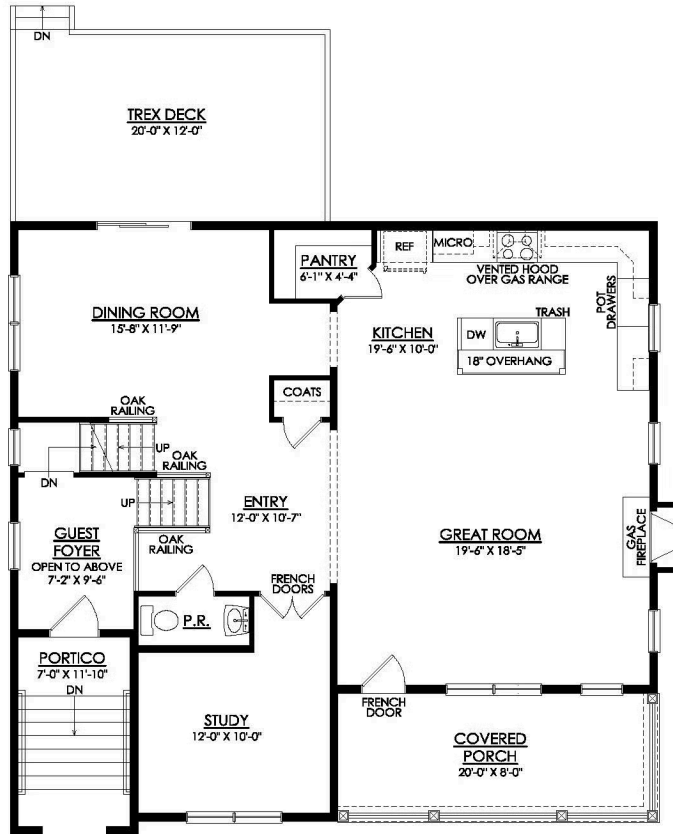
Step into luxury with The Whitehall, an impressively designed home featuring a stylish and unique floorplan. As you enter through the convenient 2-Car Garage, you'll be greeted by the Family Foyer, a perfect space to keep your coats, shoes, and any other items out of sight. For extra comfort, this home includes a specially Finished Basement, complete with a 4th Bedroom and Full Bath. Take ... Read More at tuskeshomes.com

HOME FEATURES

- 4 Bedrooms
- 3.5 Bathrooms
- 2-Car Garage
- Finished Basement with Full Bath
- Owner's Suite with Spacious Walk-in Closet and Private Bath
- Open-Concept Great Room and Kitchen
- Gas Fireplace
- Stainless Steel GE Appliances in Kitchen
- Private Study

4929 FARRCROFT DRIVE #83B

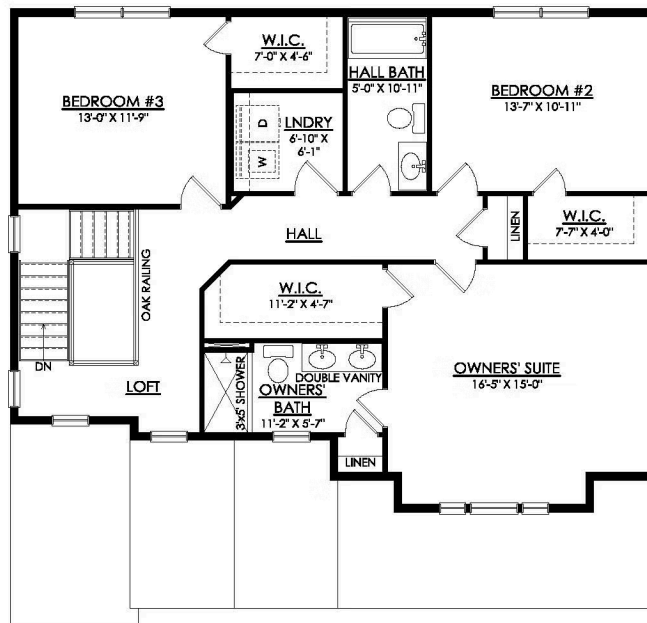
Easton, PA 18040



WHITEHALL CRAFTSMAN
1ST FLOOR PLAN
SC83B

4929 FARRCROFT DRIVE #83B

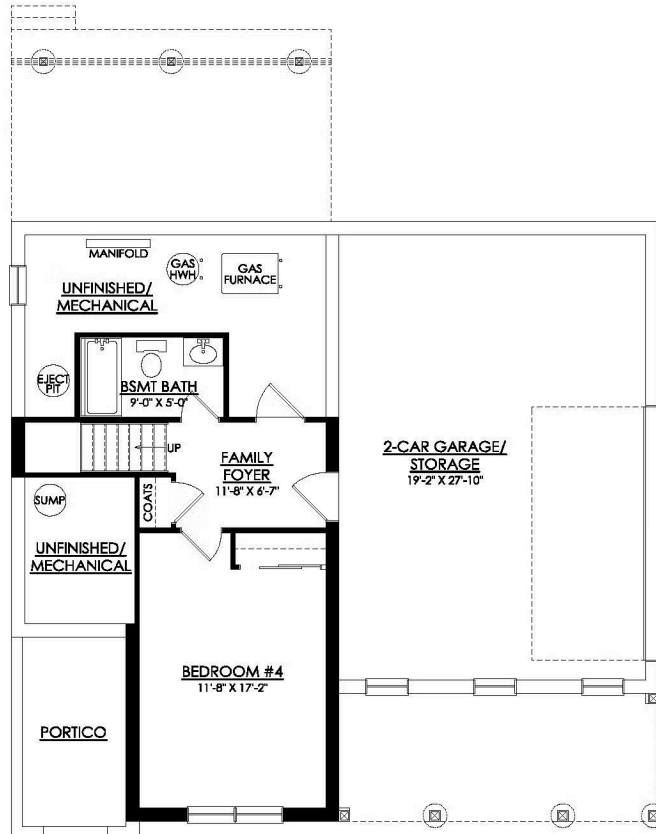
Easton, PA 18040



WHITEHALL CRAFTSMAN
2ND FLOOR PLAN
SC83B

4929 FARRCROFT DRIVE #83B

Easton, PA 18040



**WHITEHALL CRAFTSMAN
BASEMENT PLAN
SC83B**