

Breckenridge Grande Floor Plan

In The Estates at Steeplechase North from **\$789,900**

PLAN DETAILS

Pricing from **\$789,900**

4 Beds 3.5 Baths 3,124 Sq Ft

2 Story 2 Car Garage



Farmhouse Elevation

Experience luxury living the Breckenridge Grande, offering over 3,000 sq ft of living space. Entertain in the stunning 2-story Great Room or relax in the nearby Living Room. The enormous kitchen features ample counter space and storage, with several configuration options to fit your lifestyle. The Dining Room is perfect for formal dinners while the Study offers a quiet place to work from home. The spacious Owners' Suite is located on the second floor and includes its own Sitting Area and full Bathroom for ultimate privacy. An additional bedroom with an ensuite Bath is perfect for a guest suite or anyone in your family that needs a little more privacy. 2 more spacious bedrooms share a hall Bath, with a convenient 2nd floor Laundry Room nearby. Some images, videos, virtual tours shown ma ... Read More at tuskeshomes.com

PLAN FEATURES

- 4 Bedrooms
- 3.5 Bathrooms
- 2-Car Garage
- Starting at 3,113 Square Feet
- Spacious Pantry
- Kitchen Island with Granite or Quartz Countertops
- 42" Walk-in Kitchen Wall Cabinets with

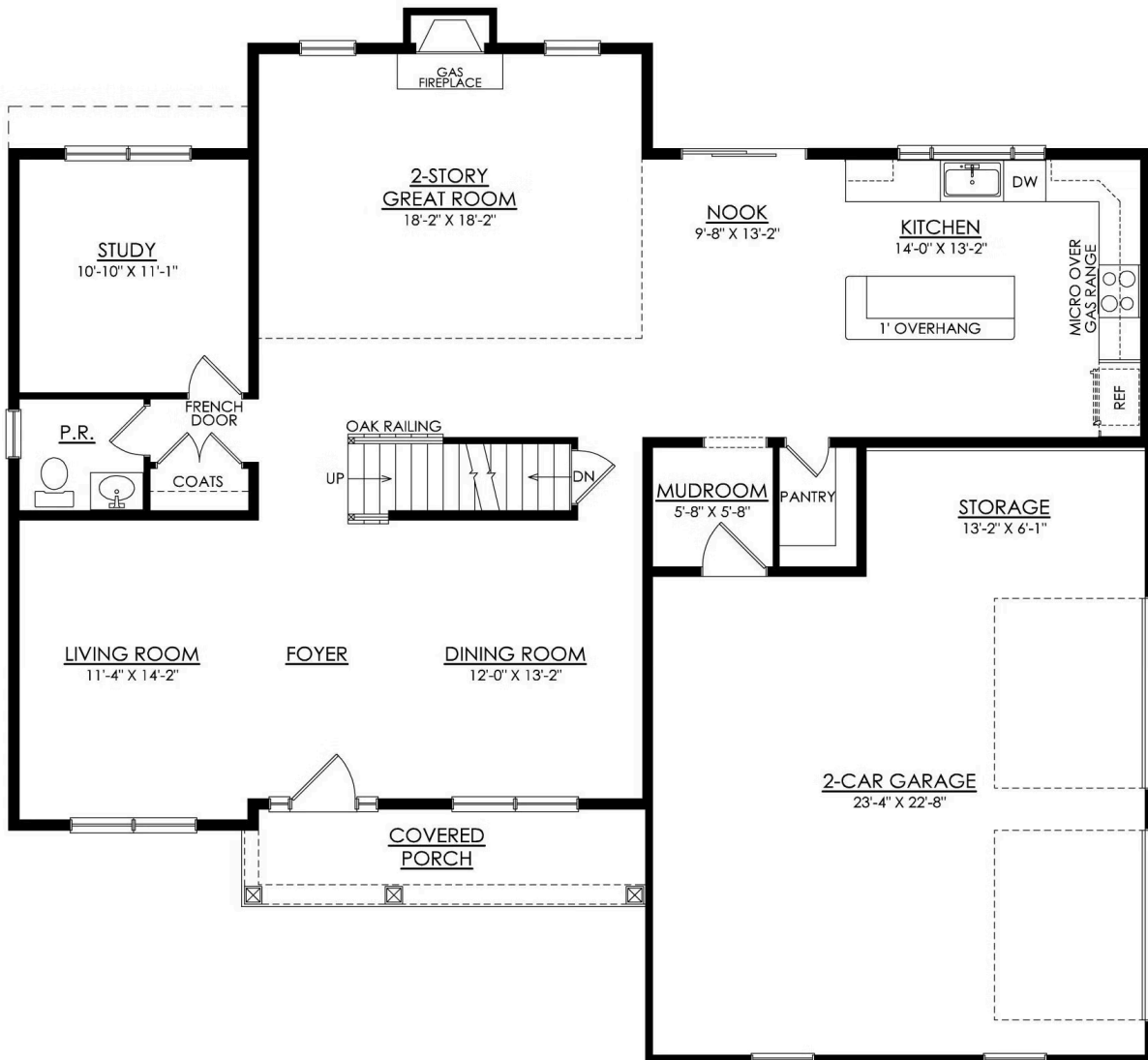
Breckenridge Grande Floor Plan

In The Estates at Steeplechase North from \$789,900



Breckenridge Grande Floor Plan

In The Estates at Steeplechase North from \$789,900



BRECKENRIDGE GRANDE FARMHOUSE 1ST FLOOR PLAN PREMIER

Breckenridge Grande Floor Plan

In The Estates at Steeplechase North from \$789,900



BRECKENRIDGE GRANDE FARMHOUSE 2ND FLOOR PLAN PREMIER



Breckenridge Grande Floor Plan

In The Estates at Steeplechase North from **\$789,900**



Breckenridge Grande Floor Plan

In The Estates at Steeplechase North from **\$789,900**



Breckenridge Grande Floor Plan

In The Estates at Steeplechase North from **\$789,900**



Breckenridge Grande Floor Plan

In The Estates at Steeplechase North from **\$789,900**



Breckenridge Grande Floor Plan

In The Estates at Steeplechase North from **\$789,900**



Breckenridge Grande Floor Plan

In The Estates at Steeplechase North from **\$789,900**



Breckenridge Grande Floor Plan

In The Estates at Steeplechase North from **\$789,900**