

Folino Floor Plan

In The Estates at Steeplechase North from **\$679,900**

PLAN DETAILS

Pricing from **\$679,900**

-



Craftsman Elevation – Side Entry

The Folino is an elegant ranch-style home with a well-planned design and alluring exterior. Step into the welcoming Foyer and continue to a private Study, two Bedrooms, and shared Hall Bath that set the tone for this sophisticated abode. The heart of this home is the open-concept Great Room, Kitchen, and Dining Room that making entertaining an effortless experience. The Kitchen boasts a large island with an overhang, offering ample seating for guests, a convenient corner pantry, and plenty of countertop space. The Great Room is bathed in natural light and leads to your backyard through a sliding door. Relax in style in your very own private haven as you enter the Owner's Suite, boasting a spacious walk-in closet and a luxurious ensuite Bath with a double vanity, linen closet, large shower, ... Read More at tuskeshomes.com

Folino Floor Plan

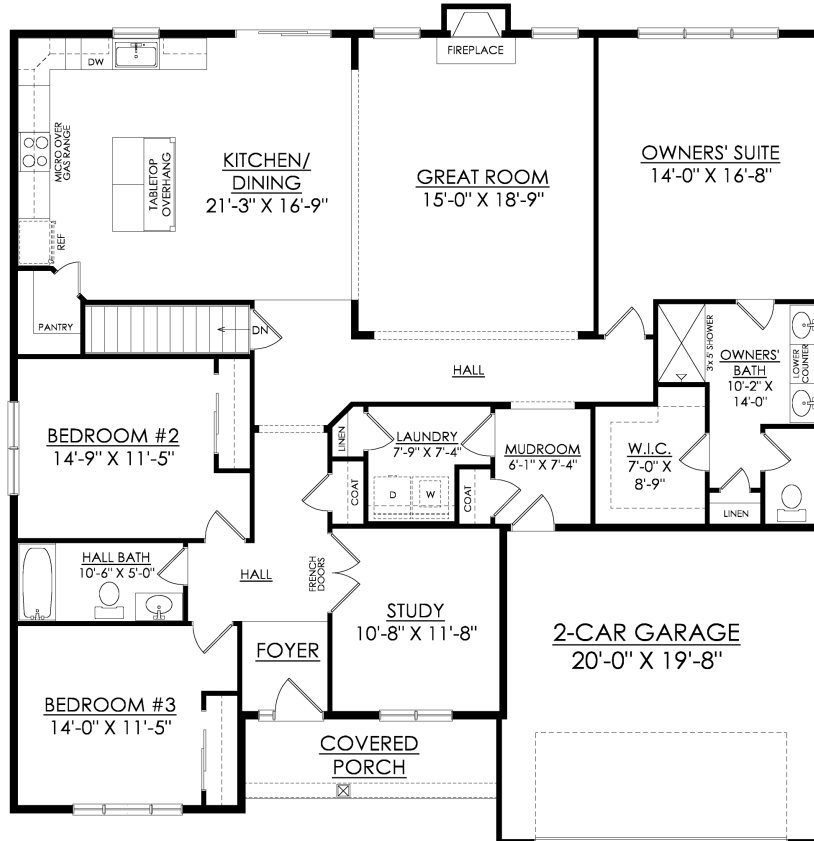
In The Estates at Steeplechase North from \$679,900



Cottage Elevation - Side Entry

Folino Floor Plan

In The Estates at Steeplechase North from \$679,900



FOLINO CRAFTSMAN
STARTING AT 2134 SF

Folino Floor Plan

In The Estates at Steeplechase North from \$679,900



FOLINO COTTAGE
STARTING AT 2134 SF