

# Juniper Floor Plan

In The Estates at Steeplechase North from **\$804,900**

## PLAN DETAILS

Pricing from **\$804,900**

4 Beds 3.5 Baths 3,307 Sq Ft

2 Story 2 Car Garage



Juniper Farmhouse- Side Entry Garage

Elevate your lifestyle with the Juniper, offering the perfect balance of privacy and comfort for you and your family. An impressive two-story Foyer sets the tone for this home's spacious open-concept main living area. The Kitchen is a cook's dream, with an expanded island, a walk-in pantry, and a butler's pantry for serving drinks or snacks. The airy 2-story Great Room boasts a gas fireplace and plenty of windows for natural light. A private Study and Powder Room complete the 1st floor layout. Head up the open staircase to find an enormous Owner's Suite with a sitting area, a walk-in closet, and a private Owner's Bath. Additionally, a Guest Suite with its own Bath, two additional Bedrooms that share a Jack-n-Jill bath, and a convenient 2nd floor laundry room can also be found on the 2 ...  
Read More at [tuskeshomes.com](https://tuskeshomes.com)

# Juniper Floor Plan

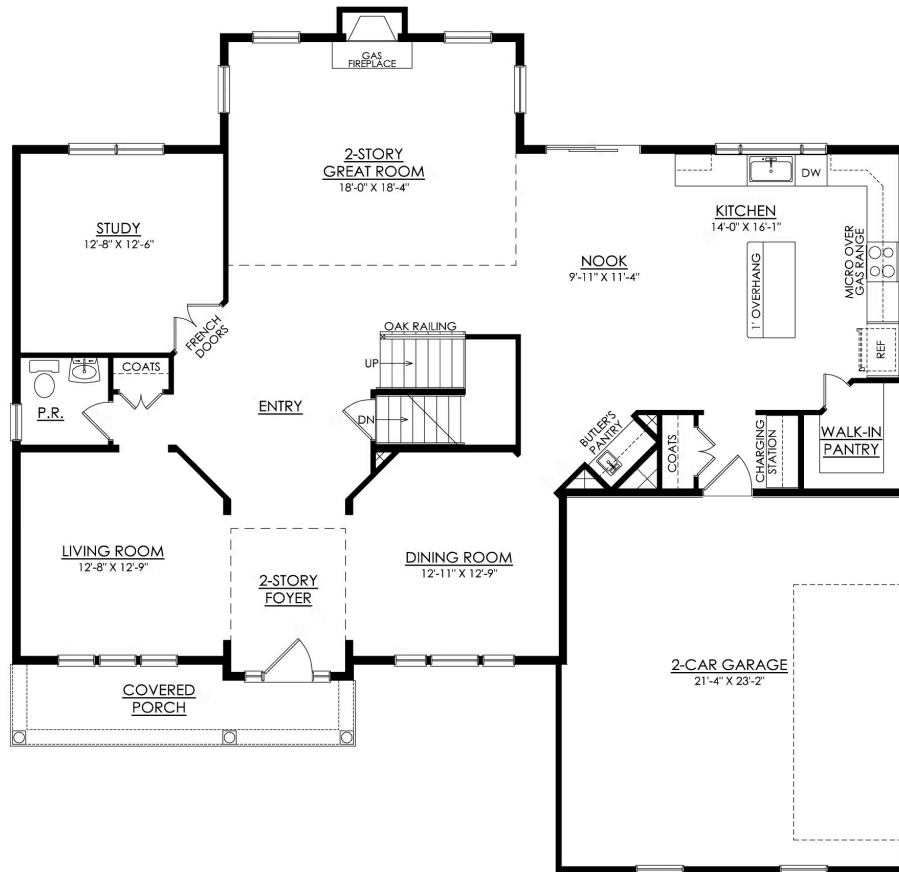
In The Estates at Steeplechase North from \$804,900





# Juniper Floor Plan

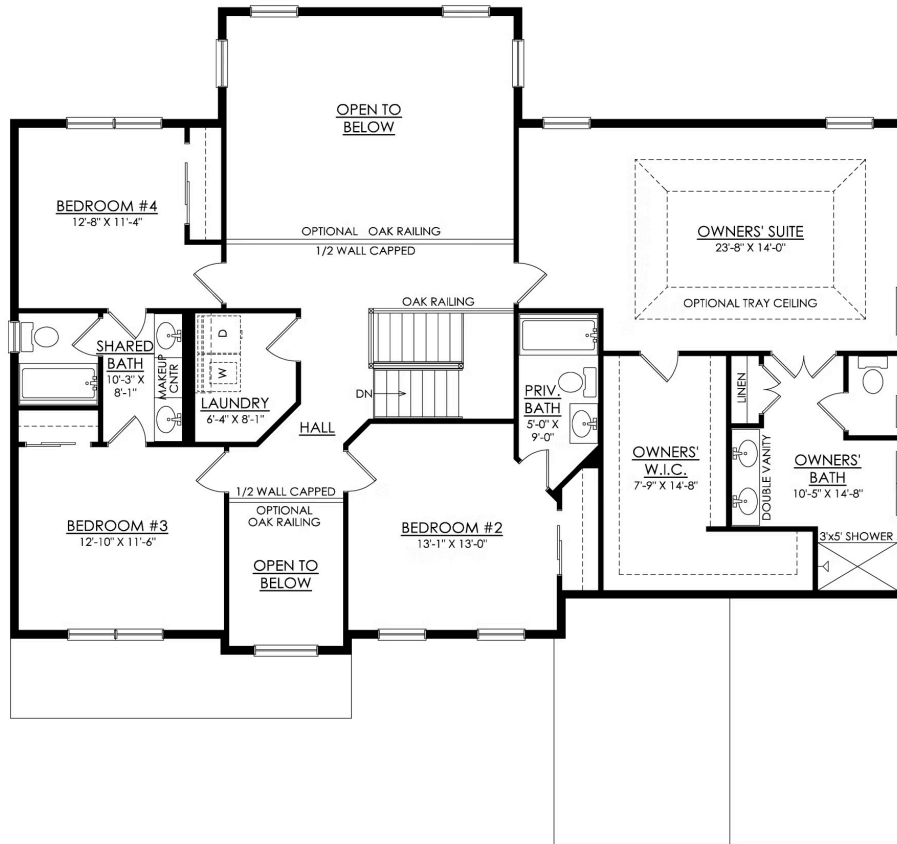
In The Estates at Steeplechase North from \$804,900



## JUNIPER FARMHOUSE 1ST FLOOR PLAN PREMIER

# Juniper Floor Plan

In The Estates at Steeplechase North from \$804,900



## JUNIPER FARMHOUSE 2ND FLOOR PLAN PREMIER





# Juniper Floor Plan

In The Estates at Steeplechase North from **\$804,900**



# Juniper Floor Plan

In The Estates at Steeplechase North from **\$804,900**