

Madison Floor Plan

In The Estates at Steeplechase North from **\$649,900**

PLAN DETAILS
Pricing from **\$649,900**

- 4 Beds
 2.5 Baths
 2,392 Sq Ft
- 2 Story
 2 Car Garage



Traditional Side Entry Elevation

Welcome to the Madison, a charming and inviting home that's become one of our most popular floorplans. You'll feel right at home as soon as you step into its modern open-concept main living area. The seamless flow between the Dining Room, Kitchen with Nook, and Great Room creates a warm and welcoming atmosphere. The bright and sunny study with French doors and wall of windows is a perfect place to work or learn from home. The welcoming Foyer, convenient Powder Room, and practical Mudroom near the 2-car garage are just some of the lovely touches that make the Madison special. Upstairs, the Owner's Suite awaits with its spacious walk-in closet and private ensuite Bath. And with three additional Bedrooms, a full Bath, and a second-floor Laundry Room, there's plenty of space for everyone!Some ...
[Read More at tuskeshomes.com](http://tuskeshomes.com)

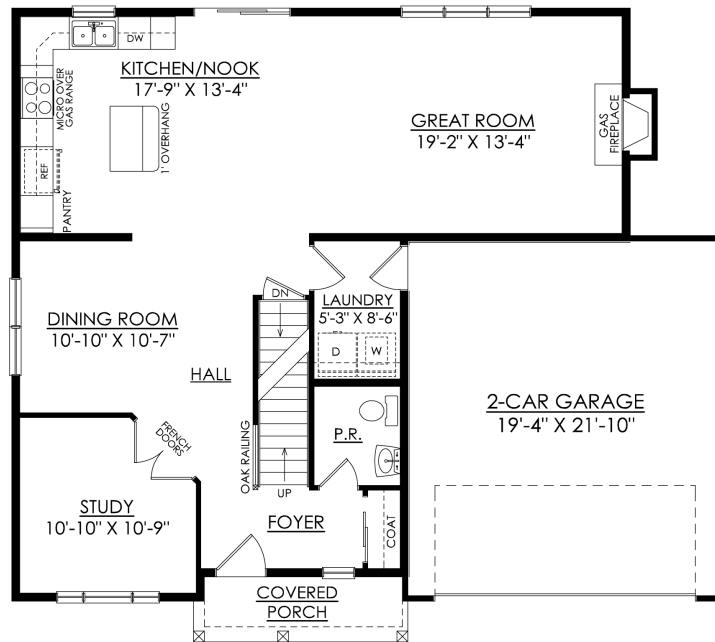
Madison Floor Plan

In The Estates at Steeplechase North from \$649,900



Madison Floor Plan

In The Estates at Steeplechase North from \$649,900

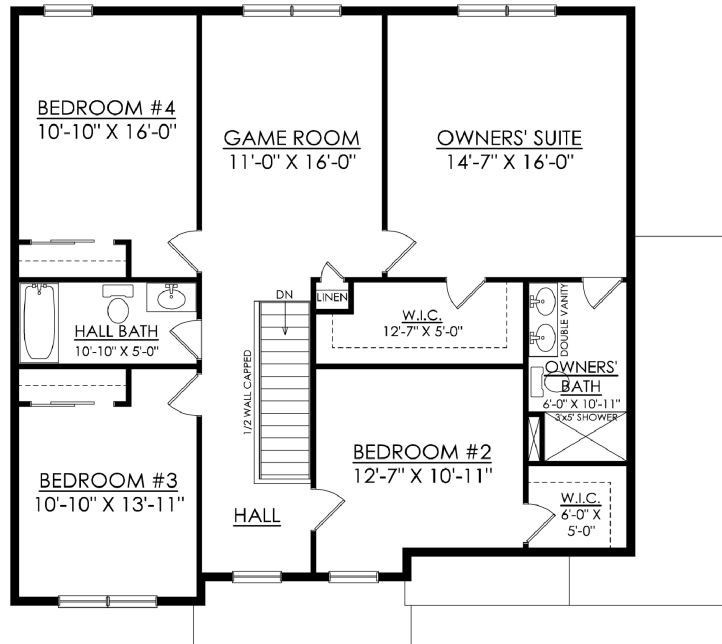


MADISON TRADITIONAL
STARTING AT 2392 SF

1ST FLOOR PLAN

Madison Floor Plan

In The Estates at Steeplechase North from \$649,900



MADISON TRADITIONAL
STARTING AT 2392 SF

2ND FLOOR PLAN

Madison Floor Plan

In The Estates at Steeplechase North from \$649,900

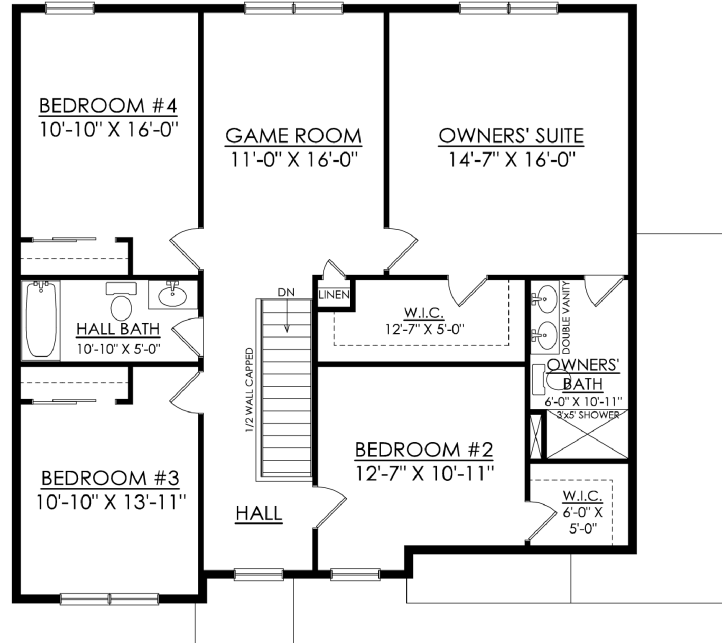


MADISON COUNTRY
STARTING AT 2392 SF

1ST FLOOR PLAN

Madison Floor Plan

In The Estates at Steeplechase North from \$649,900



MADISON COUNTRY
STARTING AT 2392 SF

2ND FLOOR PLAN