

Magnolia Floor Plan

In The Estates at Steeplechase North from **\$754,900**

PLAN DETAILS

Pricing from **\$754,900**

4 Beds 2.5 Baths 2,820 Sq Ft

2 Story 2 Car Garage



Craftsman Elevation - Side Entry Garage

Step into opulence with The Magnolia, a stunning floorplan starting at 2,820 sq ft. The Kitchen boasts a large island with seating, granite or quartz countertops, and a dining Nook surrounded by windows. The main level also includes a spacious Great Room, formal Dining Room, Private Study with French doors, Powder Room, Mudroom, and welcoming Foyer. Upstairs, the Owners' Suite features a spacious Walk-In Closet with an attached full Bath. Three additional bedrooms, a shared hall bath, and a 2nd floor Laundry Room complete the layout. For even more space, consider the optional Bonus Room above the Garage, perfect for a 5th Bedroom, Home Office, or Play Room. Some images, videos, virtual tours shown may be from a previously built Tuskes home of similar design. Actual options, colors, and ... Read More at tuskeshomes.com

PLAN FEATURES

- 4 Bedrooms
- 2.5 Bathrooms
- 2-Car Garage with Additional Storage
- Starting at 2,820 Square Feet
- Granite or Quartz Kitchen Countertops
- 42" Wellborn Kitchen Wall Cabinets with Crown Moulding and Full Extension Wood Dovetail Drawers
- GE Stainless Steel Range/Oven, Microwave, and Dishwasher
- Dining Nook
- 2nd Floor Laundry Room
- Mudroom with Coat Closet
- Private Owners' Suite including a Spacious Bath featuring a 3'x5' Owners' Shower with Tiled Walls and Soap Shelf
- Optional Bonus Room over Garage

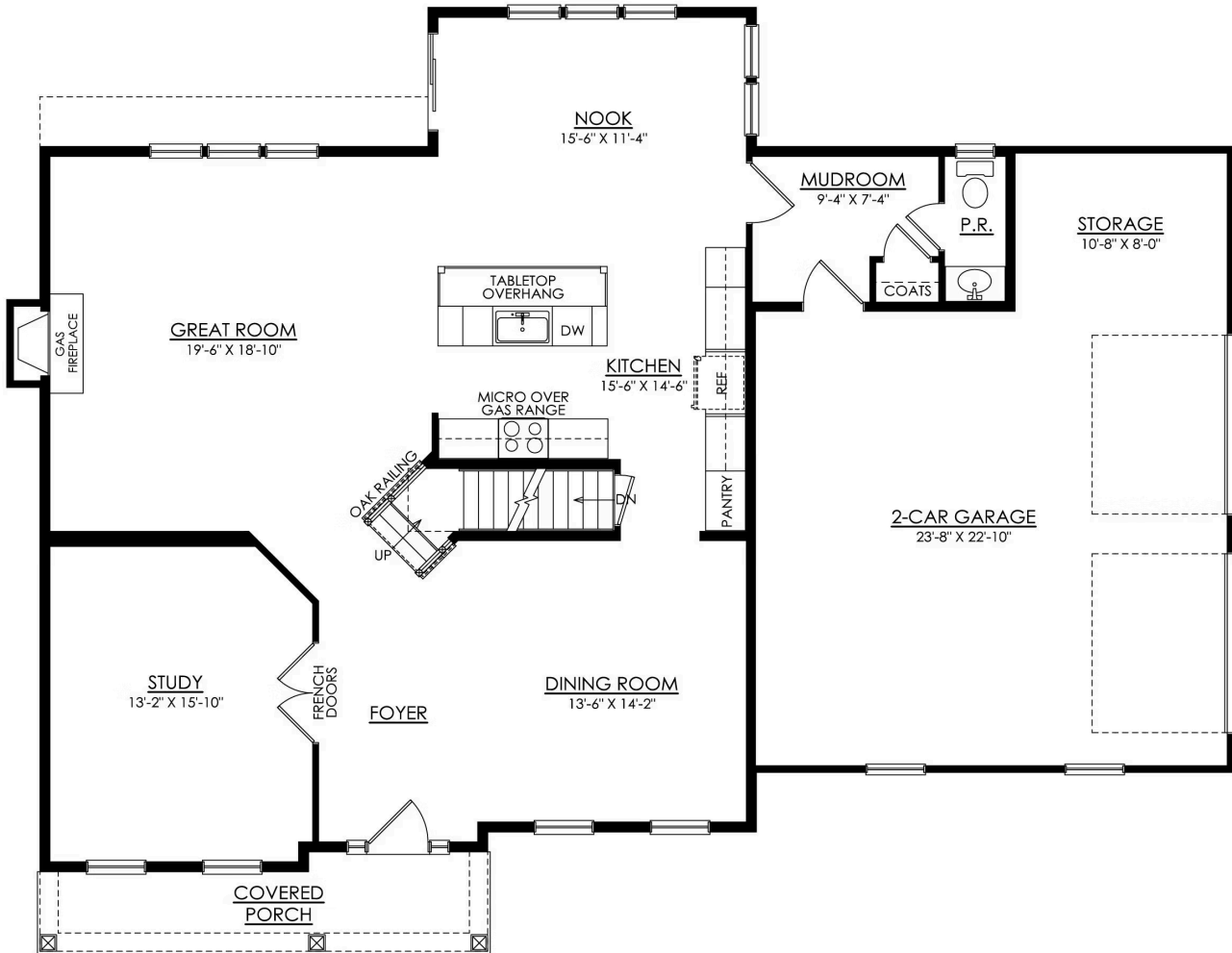
Magnolia Floor Plan

In The Estates at Steeplechase North from \$754,900



Magnolia Floor Plan

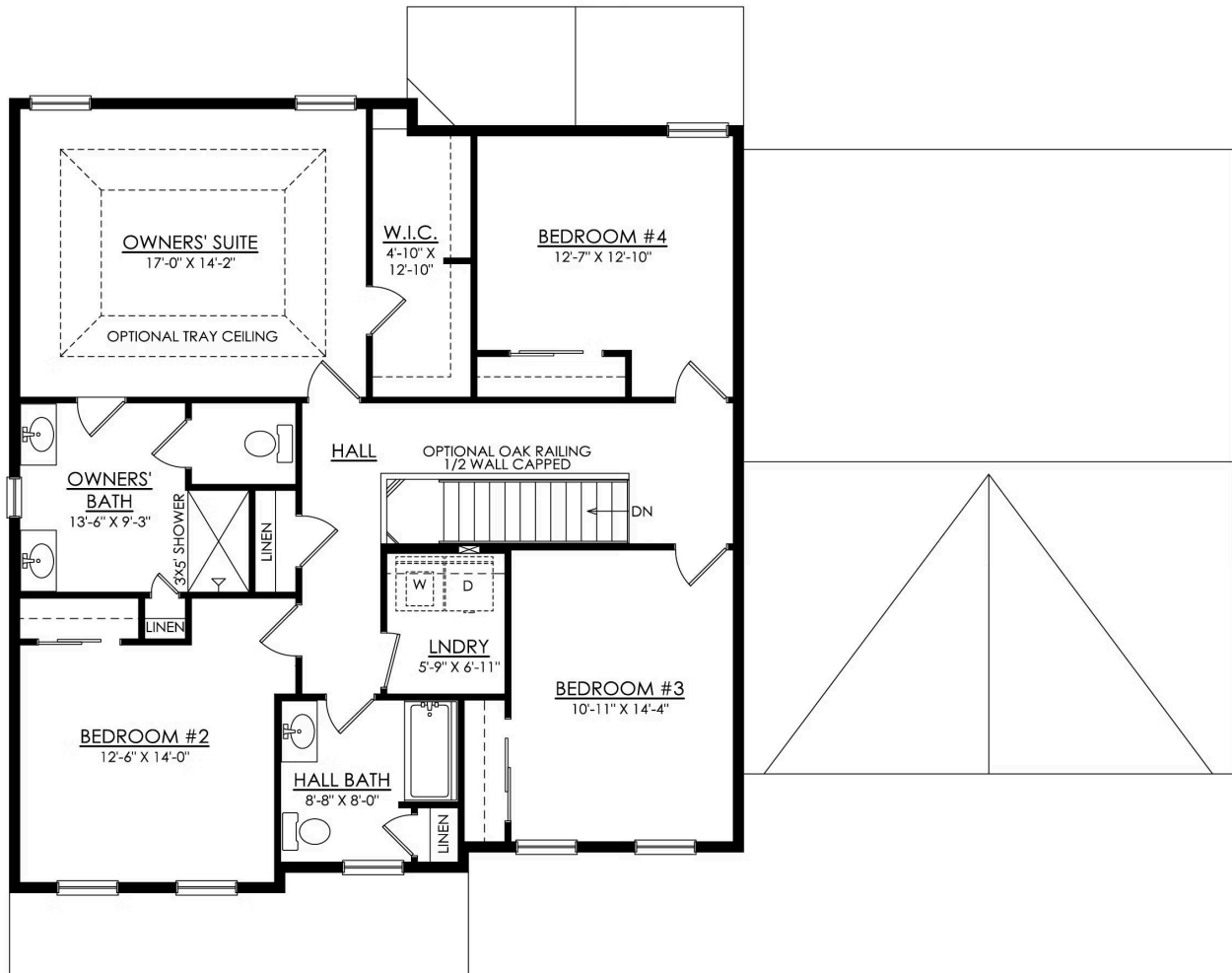
In The Estates at Steeplechase North from \$754,900



MAGNOLIA CRAFTSMAN 1ST FLOOR PLAN PREMIER

Magnolia Floor Plan

In The Estates at Steeplechase North from \$754,900



MAGNOLIA CRAFTSMAN 2ND FLOOR PLAN PREMIER



Magnolia Floor Plan

In The Estates at Steeplechase North from **\$754,900**



Magnolia Floor Plan

In The Estates at Steeplechase North from **\$754,900**



Magnolia Floor Plan

In The Estates at Steeplechase North from **\$754,900**



Magnolia Floor Plan

In The Estates at Steeplechase North from **\$754,900**