

Rockford Floor Plan

In The Estates at Steeplechase North from **\$682,900**

PLAN DETAILS

Pricing from **\$682,900**

 3 Beds  2.0 Baths  2,124 Sq Ft

 1 Story  2 Car Garage



Rockford Craftsman - Side-Entry

Introducing the Rockford, an inviting Ranch home designed for both comfort and style and offers a thoughtful layout that maximizes space and functionality. At the heart of the home, the open-concept design of the Great Room and Kitchen creates a welcoming atmosphere. With a grand cathedral ceiling and a wall of windows, there is a sense of openness so that no matter how many people visit, you will never feel cramped. The Owner's Suite tucked away in the back of the home includes two spacious Walk-In Closets, as well as its own ensuite bathroom for added privacy. The Rockford also features two additional Bedrooms that offer flexibility for guests, a home office, or other uses to suit your needs. With thoughtfully designed spaces and a layout that promotes flow and functionality, t ... Read More at tuskeshomes.com

PLAN FEATURES

3 Bedrooms

2 Baths

2-Car Garage

Open Concept Great Room and Kitchen

Spacious Kitchen Pantry

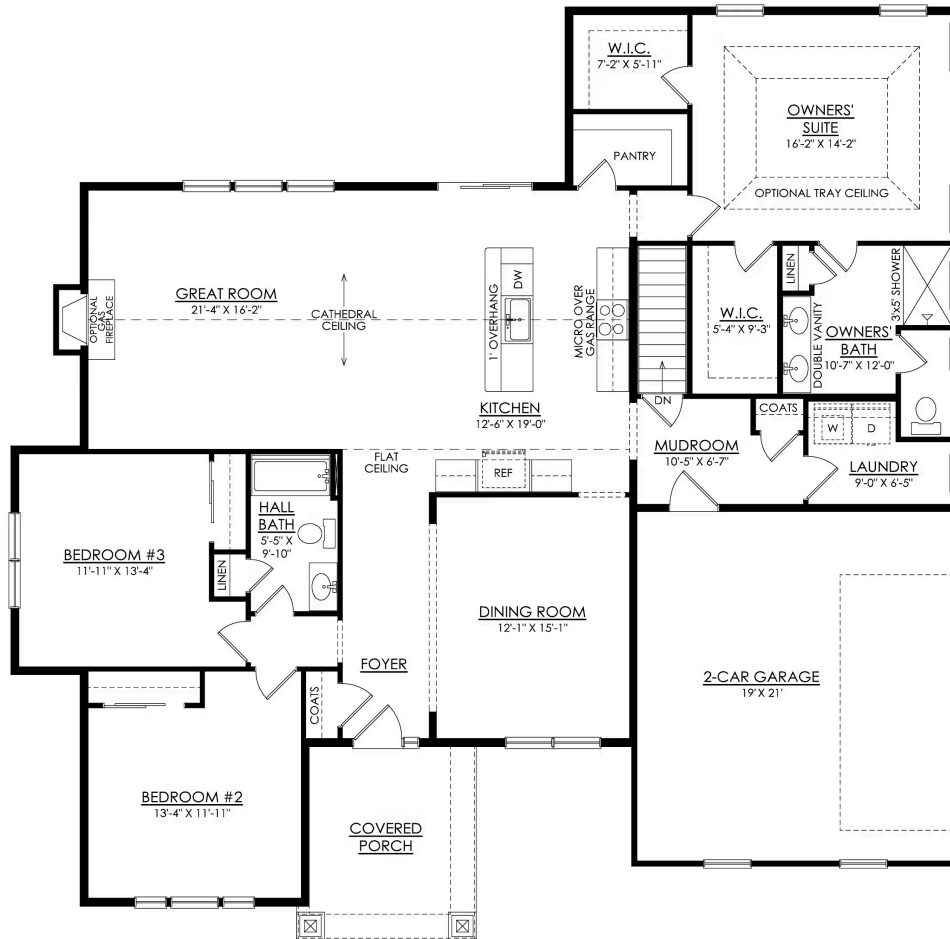
Rockford Floor Plan

In The Estates at Steeplechase North from \$682,900



Rockford Floor Plan

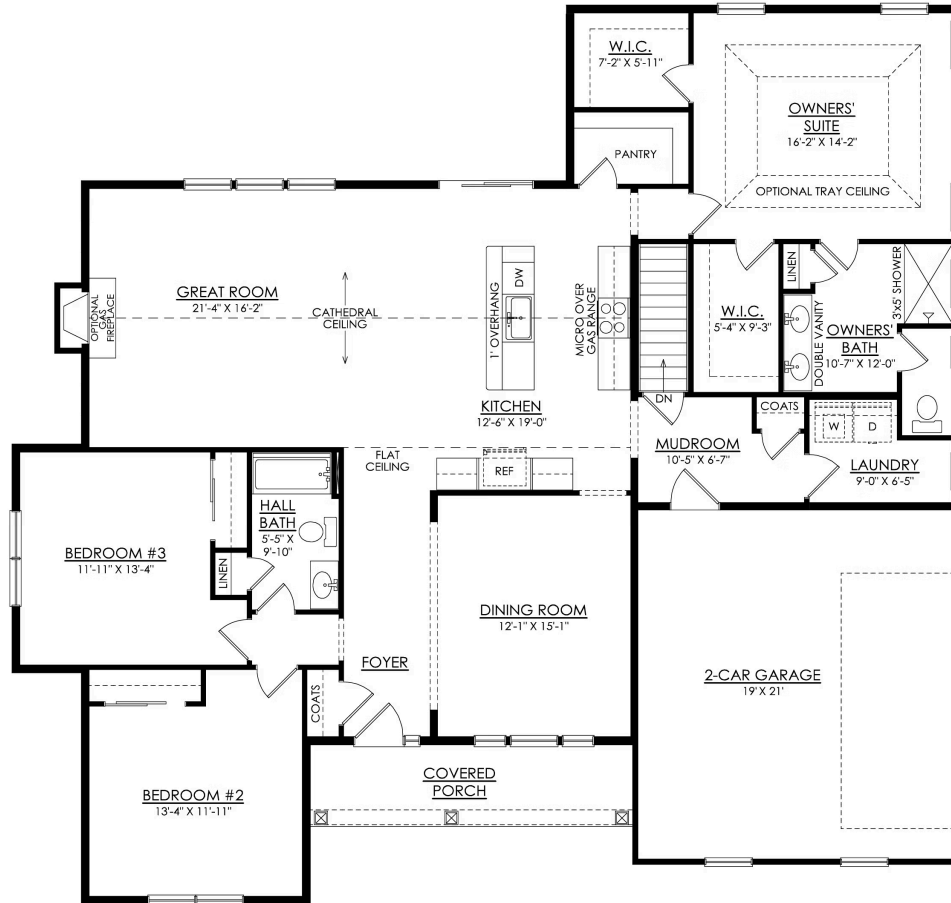
In The Estates at Steeplechase North from \$682,900



ROCKFORD CRAFTSMAN
1ST FLOOR PLAN
PREMIER

Rockford Floor Plan

In The Estates at Steeplechase North from \$682,900



ROCKFORD COTTAGE
1ST FLOOR PLAN
PREMIER



Rockford Floor Plan

In The Estates at Steeplechase North from **\$682,900**