

# Rockford Floor Plan

In The Estates at Steeplechase North from **\$702,900**

## PLAN DETAILS

Pricing from **\$702,900**

3 Beds 2.0 Baths 2,162 Sq Ft

1 Story 2 Car Garage



Craftsman Elevation

Introducing the Rockford, an inviting Ranch home designed for both comfort and style and offers a thoughtful layout that maximizes space and functionality. At the heart of the home, the open-concept design of the Great Room and Kitchen creates a welcoming atmosphere. With a grand cathedral ceiling and a wall of windows, there is a sense of openness so that no matter how many people visit, you will never feel cramped. The Owners' Suite tucked away in the back of the home includes two spacious Walk-In Closets, as well as its own ensuite bathroom for added privacy. The Rockford also features two additional Bedrooms that offer flexibility for guests, a home office, or other uses to suit your needs. With thoughtfully designed spaces and a layout that promotes flow and functionality, t ... [Read More at tuskeshomes.com](https://www.tuskeshomes.com)

## PLAN FEATURES

- 3 Bedrooms
- 2 Baths
- 2-Car Garage
- Starting at 2,162 Square Feet
- Open Concept Great Room and Kitchen
- Kitchen Island with Quartz or Granite Countertops
- 42" Wellborn Kitchen Wall Cabinets with Crown Moulding and Full Extension Wood Dovetail Drawers
- GE Stainless Steel Range/Oven, Microwave, and Dishwasher
- Spacious Kitchen Pantry
- Cathedral Ceiling in Great Room
- Private Owners' Suite with 2 Walk-In Closets and Private Bath
- 3'x5' Owners' Shower with Tiled Walls and Soap Shelf
- Covered Front Porch
- Optional Morning Room

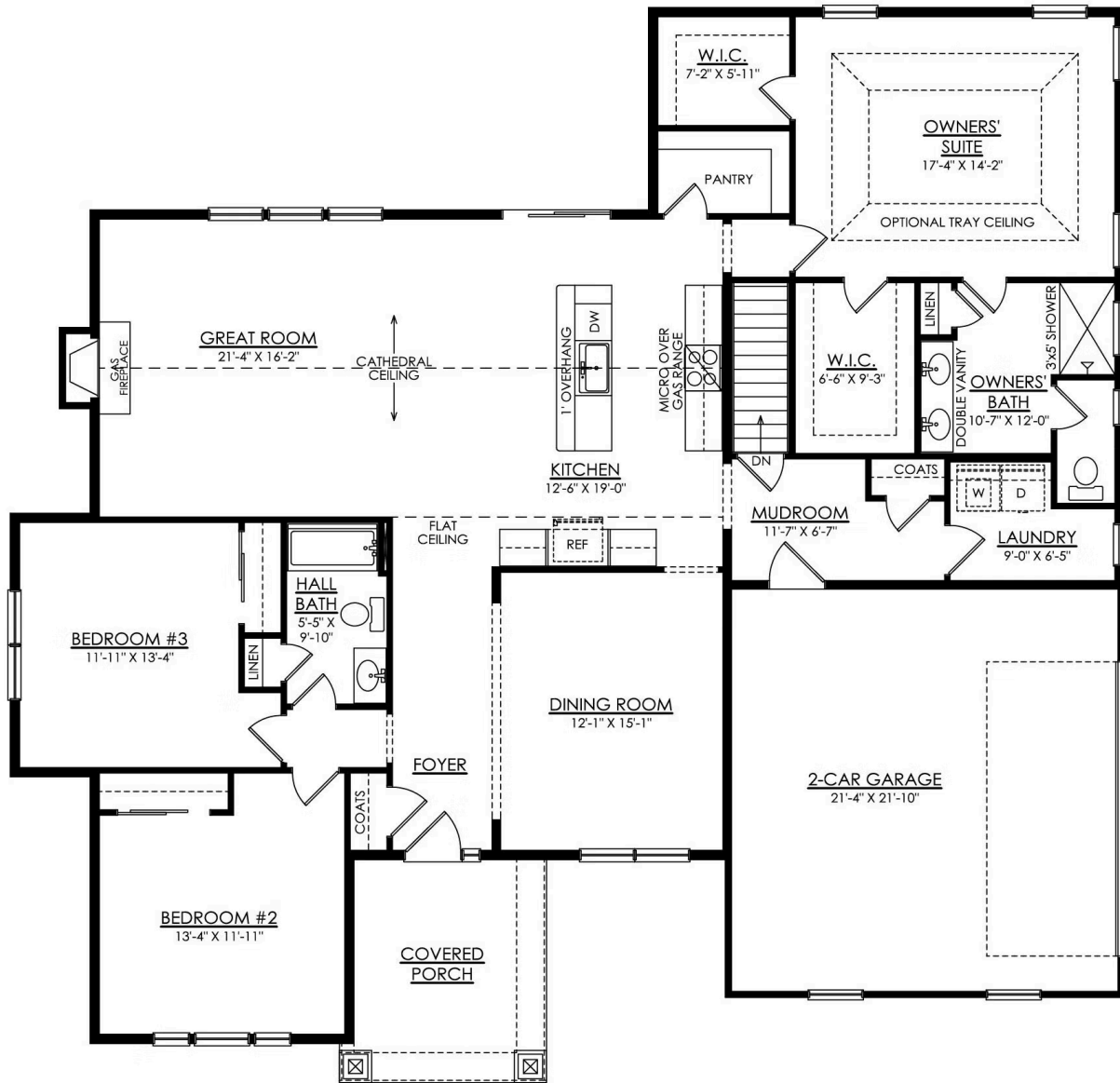
# Rockford Floor Plan

In The Estates at Steeplechase North from \$702,900



# Rockford Floor Plan

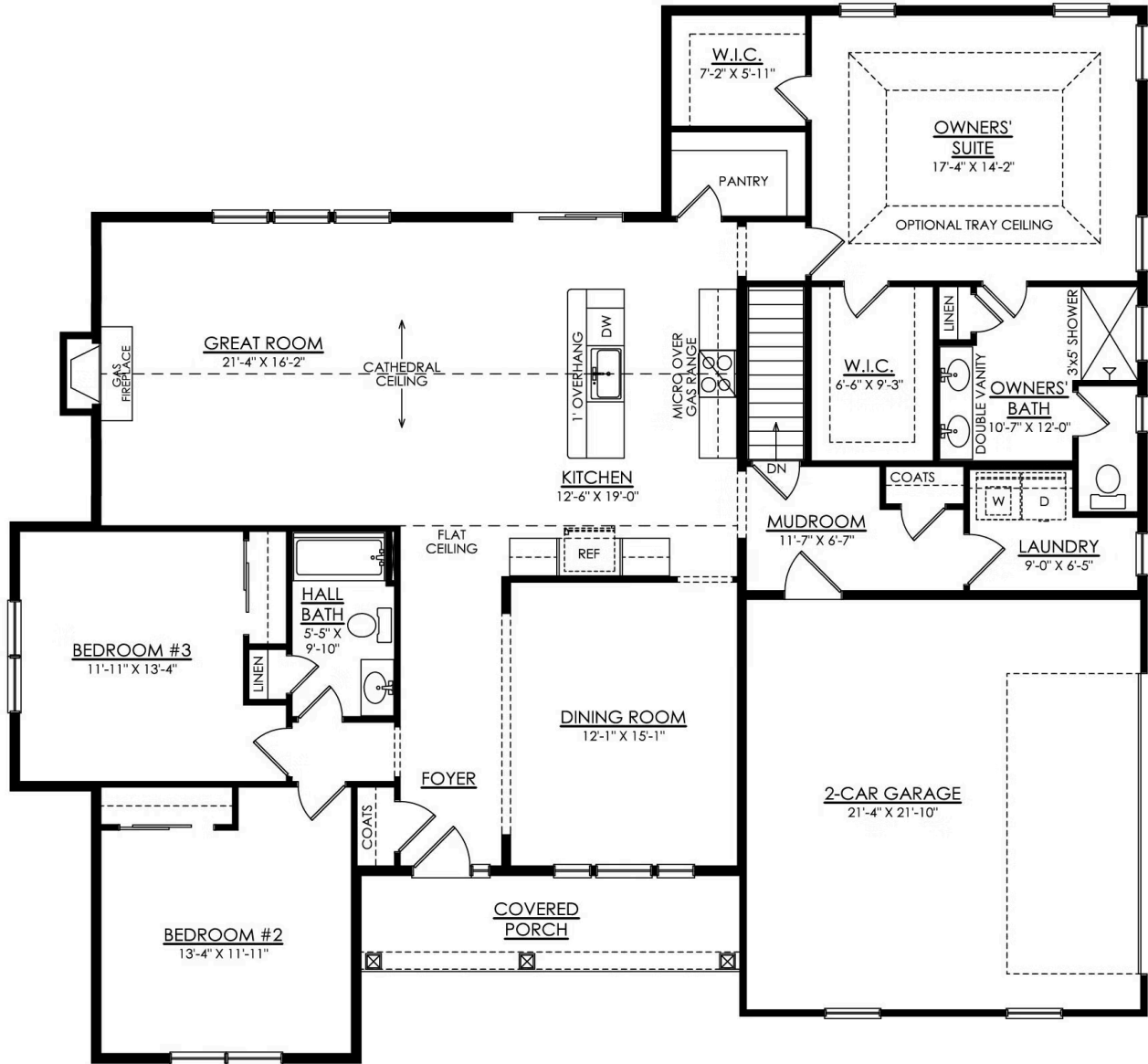
In The Estates at Steeplechase North from \$702,900



## ROCKFORD CRAFTSMAN 1ST FLOOR PLAN PREMIER

# Rockford Floor Plan

In The Estates at Steeplechase North from \$702,900



## ROCKFORD COTTAGE 1ST FLOOR PLAN PREMIER



# Rockford Floor Plan

In The Estates at Steeplechase North from **\$702,900**