

Sienna Floor Plan

In The Estates at Steeplechase North from **\$764,900**

PLAN DETAILS

Pricing from **\$764,900**

4 Beds 2.5 Baths 2,828 Sq Ft

2 Story 2 Car Garage



Country Elevation - Side Entry Garage

Live in luxury and style with the spacious Sienna, featuring an open-concept space that's designed for entertaining. The Kitchen boasts generous countertop space and a spacious island. Dine in elegance in the formal Dining Room or cozy Nook. The 2-story Great Room features a relaxing fireplace, making it the perfect spot to unwind or host family and friends. The private Study, separated by double doors, provides a quiet place to work or learn from home when needed. Step into the first-floor Owner's Suite, complete with a sitting area and a private bath retreat. On the second floor, there are three additional bedrooms and a shared hall bath for the family. For added flexibility, this plan also features an optional first-floor In-Law Suite, which relocates the Owner's suite upstairs. Some imag ...
Read More at tuskeshomes.com

Sienna Floor Plan

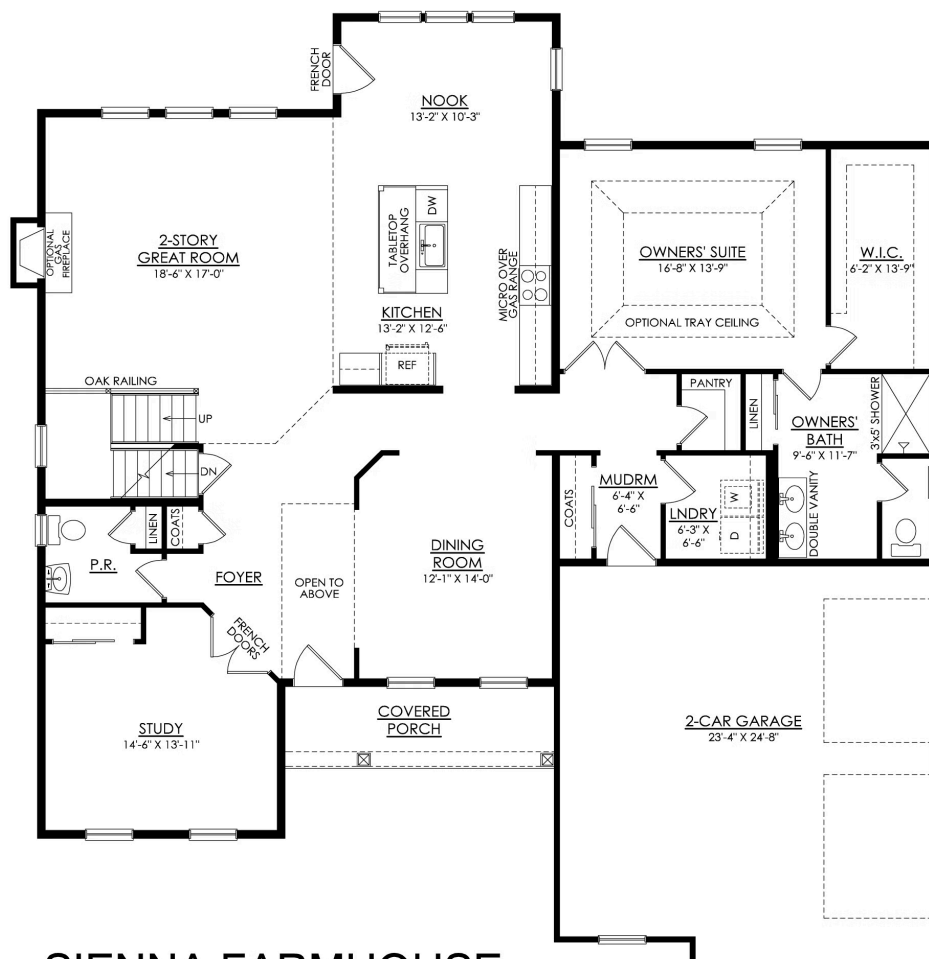
In The Estates at Steeplechase North from **\$764,900**



Farmhouse Elevation - Side Entry Garage

Sienna Floor Plan

In The Estates at Steeplechase North from \$764,900



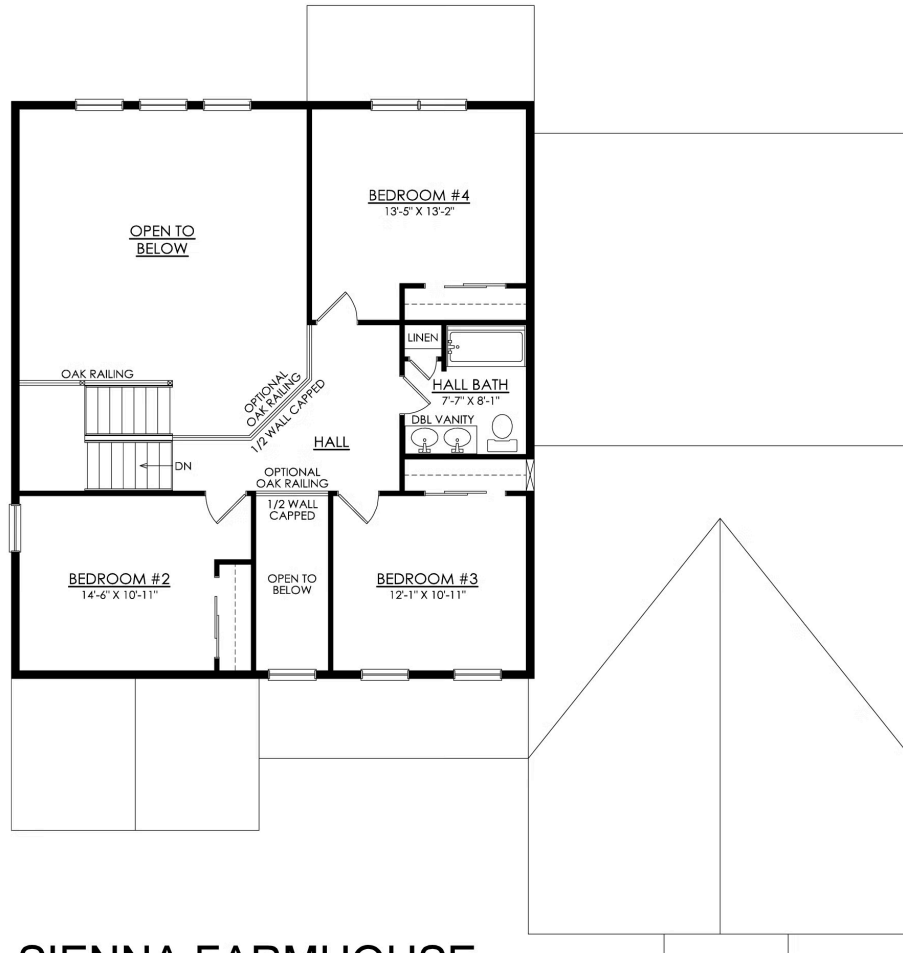
SIENNA FARMHOUSE

1ST FLOOR PLAN

PREMIER

Sienna Floor Plan

In The Estates at Steeplechase North from **\$764,900**



SIENNA FARMHOUSE
2ND FLOOR PLAN
PREMIER



Sienna Floor Plan

In The Estates at Steeplechase North from **\$764,900**



Sienna Floor Plan

In The Estates at Steeplechase North from **\$764,900**



Sienna Floor Plan

In The Estates at Steeplechase North from **\$764,900**



Sienna Floor Plan

In The Estates at Steeplechase North from **\$764,900**



Sienna Floor Plan

In The Estates at Steeplechase North from **\$764,900**



Sienna Floor Plan

In The Estates at Steeplechase North from **\$764,900**