

St. Andrews Floor Plan

In The Estates at Steeplechase North from **\$649,900**

PLAN DETAILS
Pricing from **\$649,900**

- 3 Beds
- 2.0 Baths
- 1,776 Sq Ft
- 1 Story
- 2 Car Garage



The St. Andrews floor plan is the epitome of single-story living at its finest! This home is designed for those who love to live and entertain in style. With an open-concept Kitchen featuring a countertop with an overhang, you can easily whip up a quick meal or offer seating to guests. The Dining Room is perfect for hosting dinner parties, while the Great Room with its optional cozy gas fireplace is the perfect place to relax and unwind. The Owner's Suite is a true oasis, with a spacious walk-in closet and a private bath retreat with a double-bowl vanity. Two additional Bedrooms and a shared Hall Bath complete this wonderful home. Some images, videos, virtual tours shown may be from a previously built Tuskes home of similar design. Actual options, colors, and selections may vary. Contact us ... [Read More at tuskeshomes.com](https://www.tuskeshomes.com)

St. Andrews Floor Plan

In The Estates at Steeplechase North from \$649,900



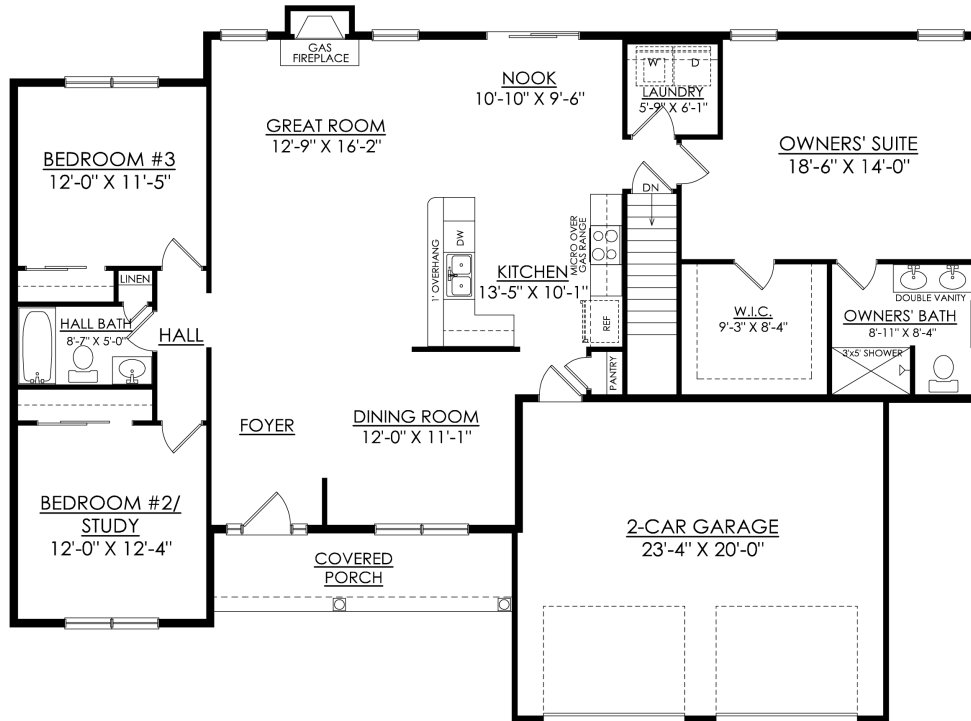
Country Elevation



Traditional Elevation

St. Andrews Floor Plan

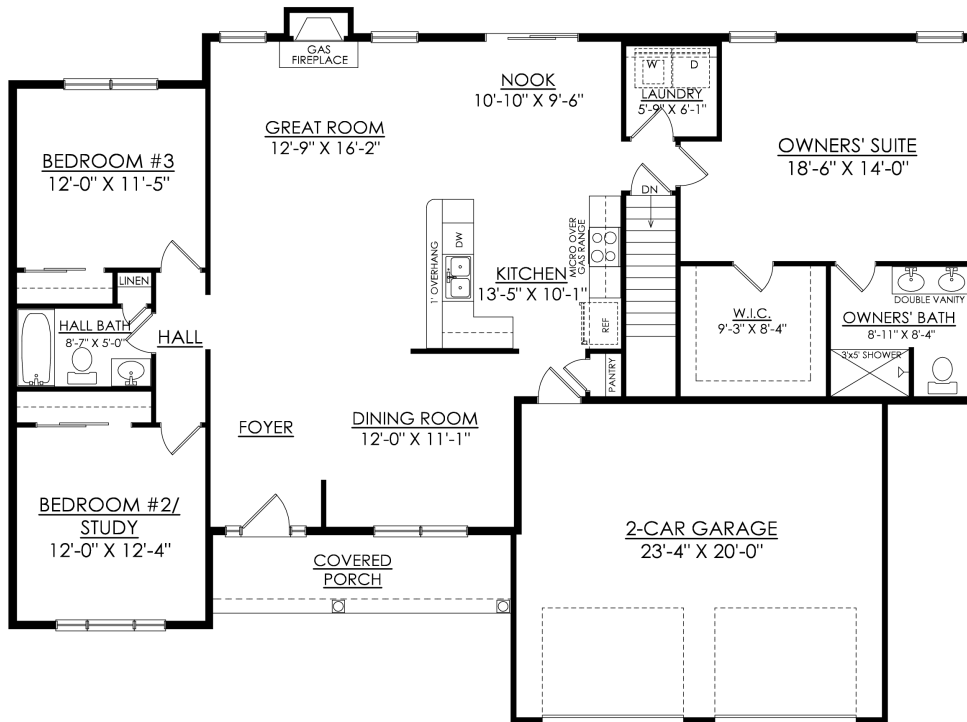
In The Estates at Steeplechase North from \$649,900



ST ANDREWS TRADITIONAL
STARTING AT 1776 SF

St. Andrews Floor Plan

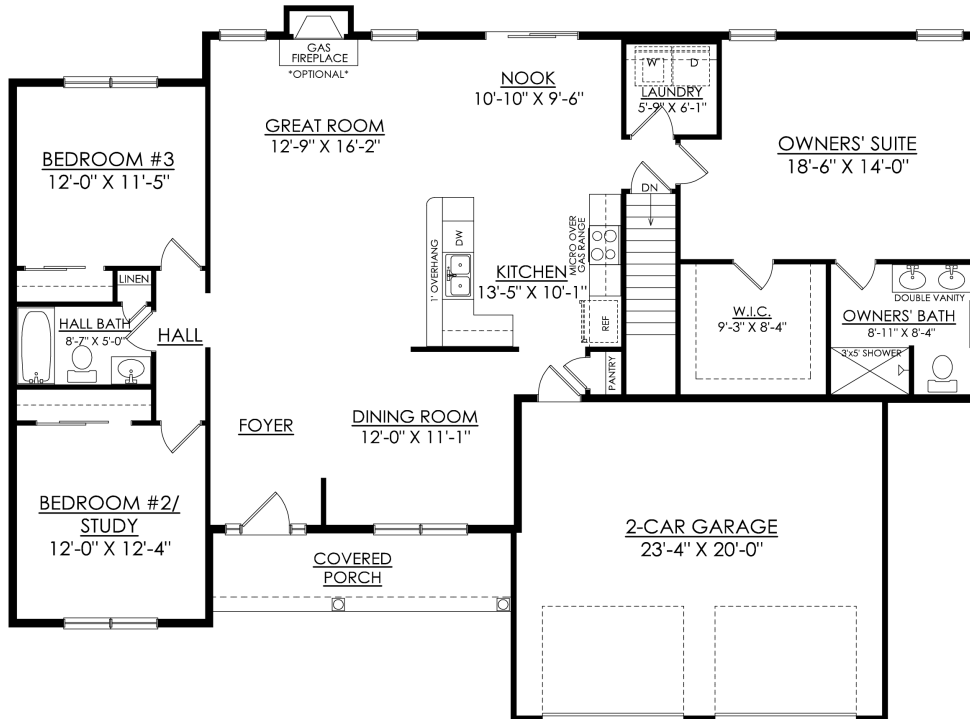
In The Estates at Steeplechase North from \$649,900



ST ANDREWS COUNTRY
STARTING AT 1776 SF

St. Andrews Floor Plan

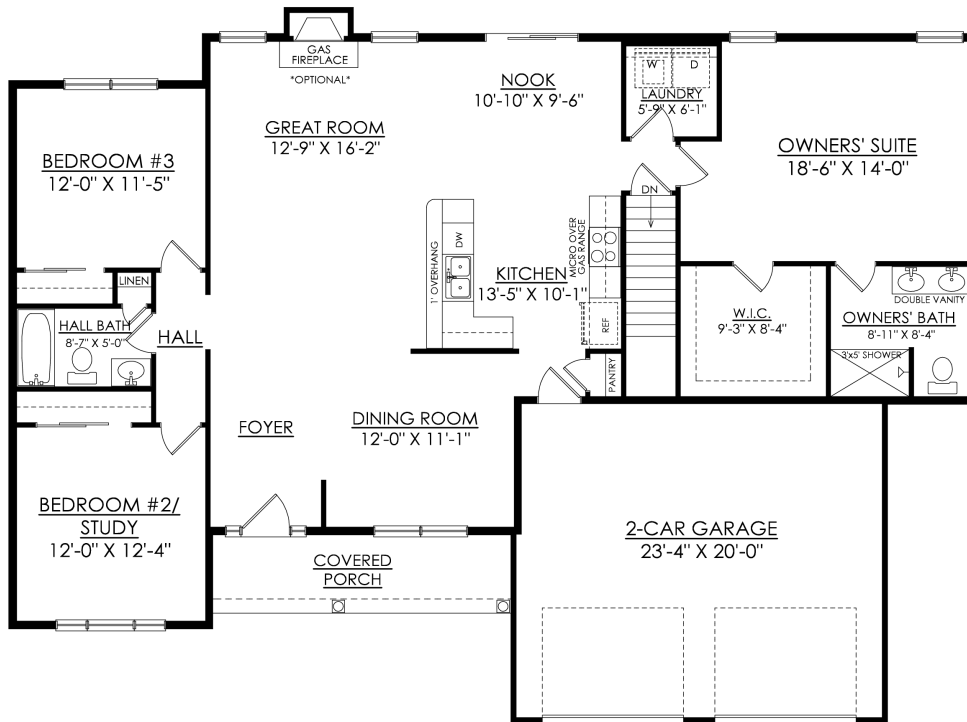
In The Estates at Steeplechase North from \$649,900



ST ANDREWS TRADITIONAL
STARTING AT 1776 SF

St. Andrews Floor Plan

In The Estates at Steeplechase North from \$649,900



ST ANDREWS COUNTRY
STARTING AT 1776 SF