

Vinecrest Floor Plan

In The Estates at Steeplechase North from **\$734,900**

PLAN DETAILS

Pricing from **\$734,900**

4 Beds 2.5 Baths 2,700 Sq Ft

2 Story 2 Car Garage



Cottage Elevation

The Vinecrest floor plan features an open-concept layout, ideal for entertaining family and friends. The Kitchen includes an island with an overhang and a convenient walk-in pantry for your organizational needs. Connected to the kitchen is the Dining Room, as well as the spacious Great Room, which features a gas fireplace for cozy nights at home. The entire first floor is filled with natural light from the walls of windows, creating a beautiful and inviting space to call home. Upon entering this home through the Foyer, you'll find a private Study through elegant double French doors, a coat closet, and a Powder Room. Just off the Two-Car Garage is the spacious Laundry Room with plenty of room for organizing cleaning supplies or anything you'd prefer to keep out of sight. This plan's Owner's S ... Read More at tuskeshomes.com

Vinecrest Floor Plan

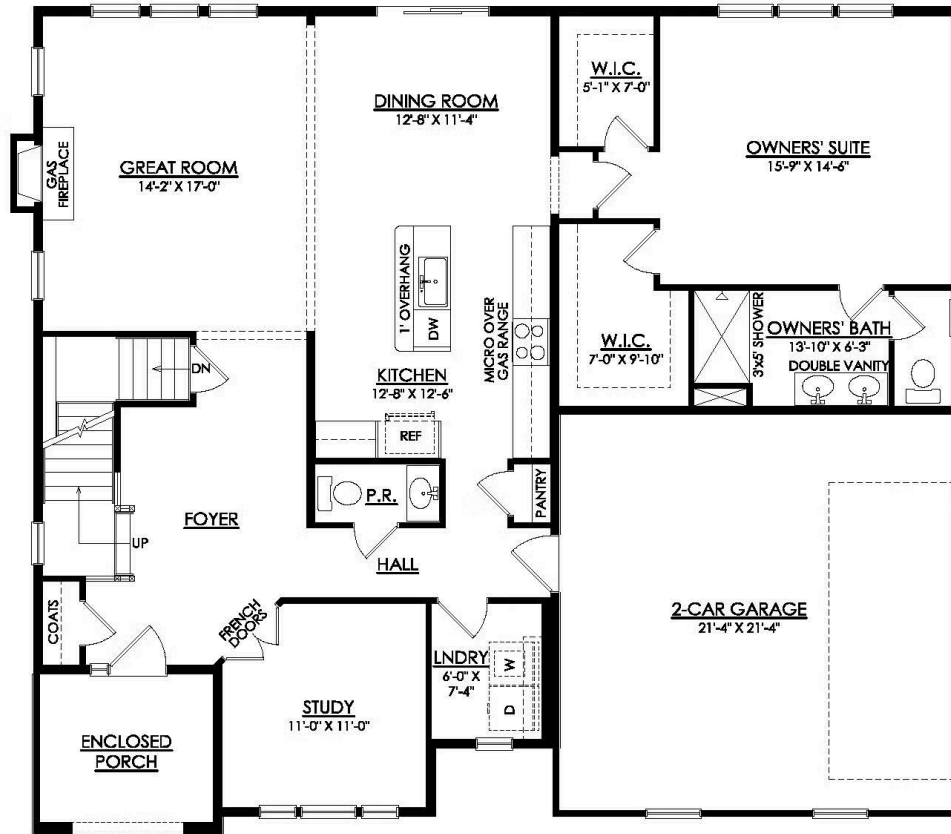
In The Estates at Steeplechase North from **\$734,900**



Traditional Elevation

Vinecrest Floor Plan

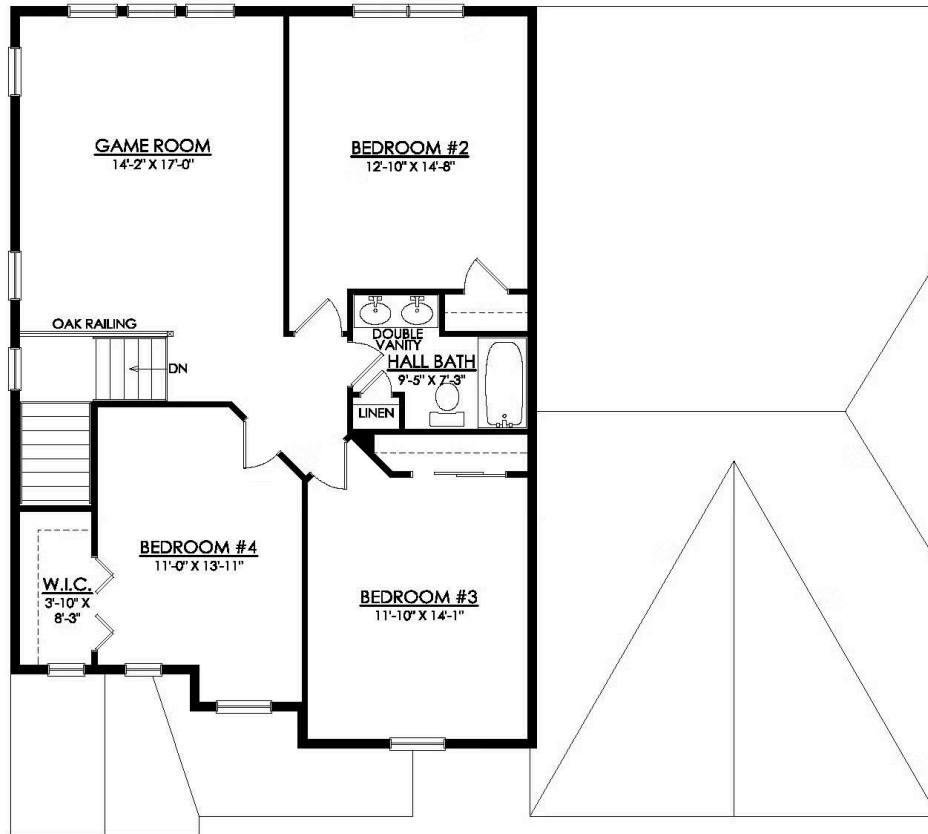
In The Estates at Steeplechase North from \$734,900



VINECREST COTTAGE 1ST FLOOR PLAN

Vinecrest Floor Plan

In The Estates at Steeplechase North from \$734,900



VINECREST COTTAGE 2ND FLOOR PLAN



Vinecrest Floor Plan

In The Estates at Steeplechase North from **\$734,900**



Vinecrest Floor Plan

In The Estates at Steeplechase North from **\$734,900**