






79 Tumble Creek Rd #15

Easton, PA 18042

HOME DETAILS

 4 Beds  5.0 Baths  4,269 Sq Ft
 2 Story  3 Car Garage



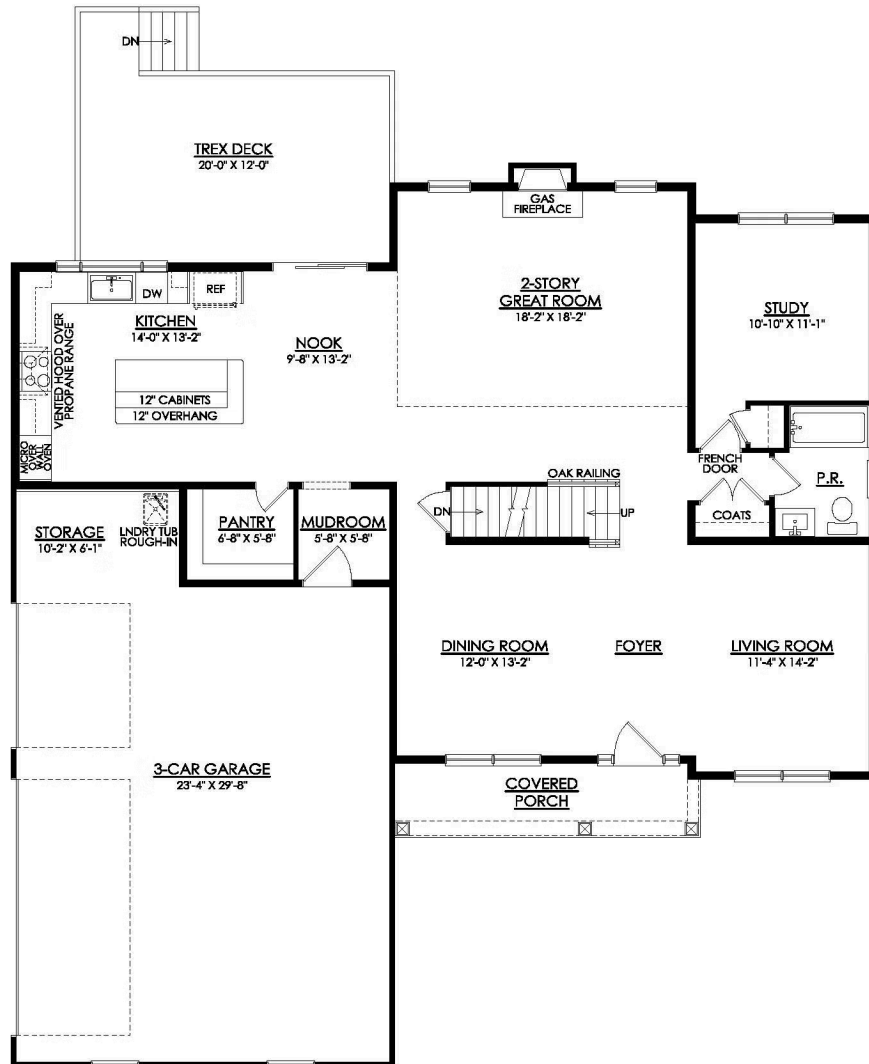
Experience luxury living the Breckenridge Grande, offering over 4000 sq ft of living space. Entertain in the stunning 2-story Great Room or relax in the nearby Living Room. The enormous gourmet kitchen features ample counter space and storage, with several configuration options to fit your lifestyle. The Dining Room is perfect for formal dinners while the Study offers a quiet place to wo... Read More at tuskeshomes.com

HOME FEATURES

- 2+ Acre Wooded Private Home Site
- 4 Bedrooms
- 5 Baths
- 3-Car Side-Entry Garage with Storage Space
- 9' Finished Walk-Up Basement with Full Bath, 5' Double French Doors, and Beautiful Wooded Views
- 2-Story Great Room with Gas Fireplace
- Full Bath on 1st Floor
- Expanded Study with Additional Closet for Guest Room
- Spacious Owner's Suite with Large Walk-In Closet, Private Bath, and Sitting Area
- 2nd Bedroom with Private Bath
- 12' x 20' Trex Deck with White Vinyl Railing and Steps to Grade

79 TUMBLE CREEK RD #15

Easton, PA 18042



**BRECKENRIDGE GRANDE
FARMHOUSE**
1ST FLOOR PLAN
TC15

79 TUMBLE CREEK RD #15

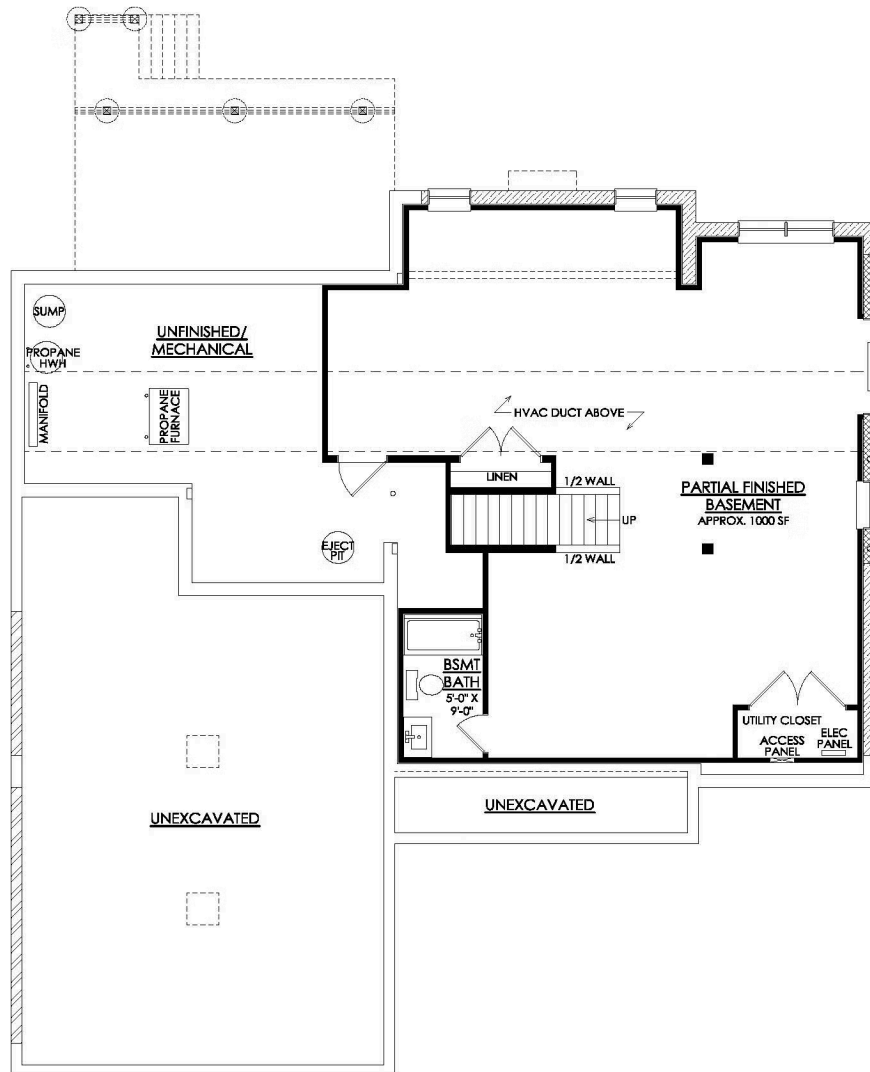
Easton, PA 18042



**BRECKENRIDGE GRANDE
FARMHOUSE**
2ND FLOOR PLAN
TC15

79 TUMBLE CREEK RD #15

Easton, PA 18042



BRECKENRIDGE GRANDE FARMHOUSE FINISHED BASEMENT PLAN TC15