

# Churchill Floor Plan

In Tumble Creek Estates from **\$829,900**

## PLAN DETAILS

Pricing from **\$829,900**

4 Beds 2.5 Baths 3,060 Sq Ft

2 Story 2 Car Garage



Farmhouse Elevation

Discover the perfect family home in The Churchill! This beauty offers over 3000 sq ft of living space of elegance and comfort. The 2-story Great Room sets the tone of this open-concept floorplan, while the living room provides a warm and inviting space for gatherings. The gourmet Kitchen, complete with Dining Nook leading to the backyard, is a chef's dream with ample countertop space and a large island with room for seating. A formal dining room and study complete the main level. The second floor boasts a luxurious Owners' Suite with private Bath. Three additional Bedrooms, a shared hall Bath, and a conveniently located 2nd floor Laundry Room can also be found upstairs. Some images, videos, virtual tours shown may be from a previously built Tuskes home of similar design. Actual options ... Read More at [tuskeshomes.com](http://tuskeshomes.com)

## PLAN FEATURES

- 4 Bedrooms
- 2.5 Bathrooms
- 2-Car Garage
- Starting at 3,060 Square Feet
- 2-Story Great Room
- Kitchen Island with Granite or Quartz Countertops
- 42" Wellborn Kitchen Wall Cabinets with Crown Moulding, and Full Extension Dovetail Drawers
- GE Stainless Steel Range/Oven, Microwave, and Dishwasher
- Fully Tiled 4'x6' Shower with Quartz Bench in Owners' Bath
- Private Owners' Suite with Walk-In Closet
- 2nd Floor Laundry Room

# Churchill Floor Plan

In Tumble Creek Estates from \$829,900



# Churchill Floor Plan

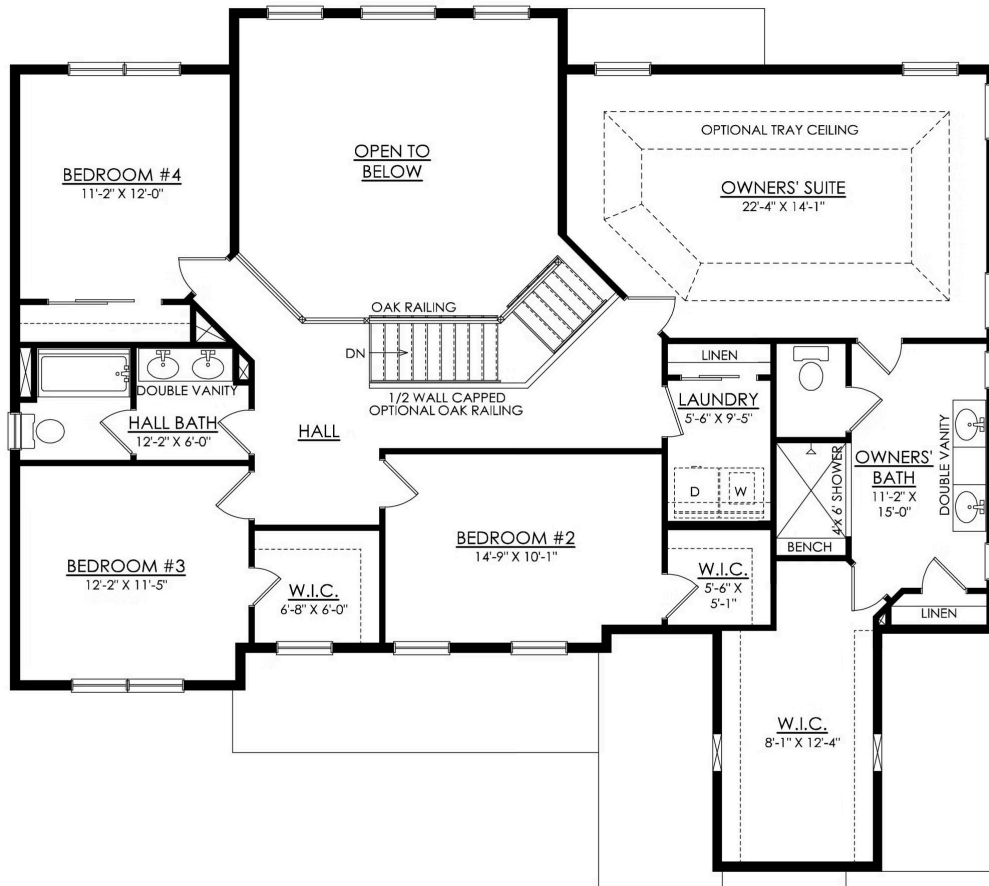
In Tumble Creek Estates from \$829,900



## CHURCHILL FARMHOUSE 1ST FLOOR PLAN HERITAGE

# Churchill Floor Plan

In Tumble Creek Estates from \$829,900



**CHURCHILL FARMHOUSE**  
2ND FLOOR PLAN  
HERITAGE



# Churchill Floor Plan

In Tumble Creek Estates from **\$829,900**



# Churchill Floor Plan

In Tumble Creek Estates from **\$829,900**